

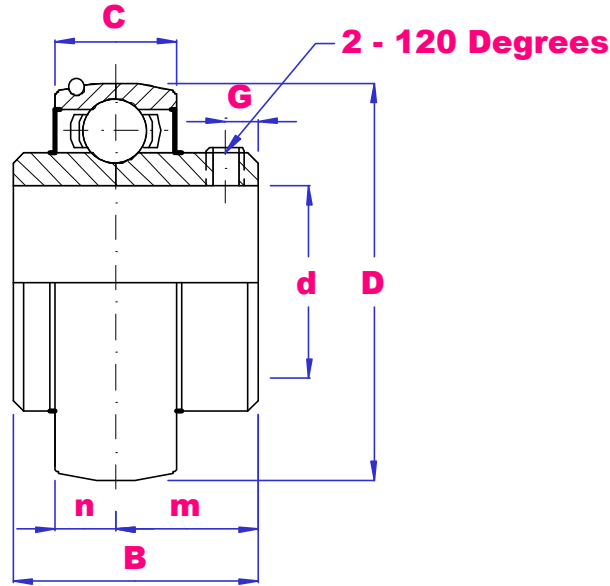


UBC

S-UC200 SERIES STAINLESS STEEL BEARING INSERTS



Quality
Endorsed
Company
ISO 9001:2000
LIC QEC20818



PART NO	d	D mm	B mm	C mm	n mm	m mm	G mm	Load D-kN	Load S-kN	Max rpm	Wgt kg
S-UC203	17	40	27.4	14	11.5	15.9	4.5	5.36	3.79	6200	0.10
S-UC204	20	47	31	17	12.7	18.3	5	9.88	5.5	5500	0.17
S-UC205	25	52	34.1	17	14.3	19.8	5	10.78	6.98	4800	0.19
S-UC206	30	62	38.1	19	15.9	22.2	5	14.97	10.04	4200	0.31
S-UC207	35	72	42.9	20	17.5	25.4	7	19.75	13.67	3600	0.46
S-UC208	40	80	49.2	21	19	30.2	8	22.71	15.94	3000	0.63
S-UC209	45	85	49.2	22	19	30.2	10	24.36	17.71	2800	0.68
S-UC210	50	90	51.6	24	19	32.6	10	26.98	19.84	2400	0.78
S-UC211	55	100	55.6	25	22.2	33.4	10	33.37	25.11	2000	1.07
S-UC212	60	110	65.1	27	25.4	39.7	10	36.74	27.97	1900	1.51
S-UC213	65	120	65.1	29	25.4	39.7	10	44.11	34.18	1700	1.86
S-UC214	70	125	74.6	30	30.2	44.4	12	44.85	36.15	1600	2.05
S-UC215	75	130	77.8	30	33.3	44.5	12	52.32	39.15	1400	2.21

INCH BORES

S-UC203-10	5/8	40	27.4	14	11.5	15.9	4.5	5.36	3.79	6200	0.10
S-UC204-12	3/4	47	31	17	12.7	18.3	5	9.88	5.5	5500	0.17
S-UC205-14	7/8	52	34.1	17	14.3	19.8	5	10.78	6.98	4800	0.21
S-UC205-16	1										0.19
S-UC206-20	1.1/4	62	38.1	19	15.9	22.2	5	14.97	10.04	4200	0.31
S-UC207-20	1.1/4	72	42.9	20	17.5	25.4	7	19.75	13.67	3600	0.46
S-UC208-24	1.1/2	80	49.2	21	19	30.2	8	22.71	15.94	3000	0.63
S-UC209-28	1.3/4	85	49.2	22	19	30.2	10	24.36	17.71	2800	0.68
S-UC211-32	2	100	55.6	25	22.2	33.4	10	33.37	25.11	2000	1.07
S-UC212-36	2.1/4	110	65.1	27	25.4	39.7	10	36.74	27.97	1900	1.51
S-UC213-40	2.1/2	120	65.1	29	25.4	39.7	10	44.11	34.18	1700	1.86
S-UC215-48	3	130	77.8	30	33.3	44.5	12	52.32	39.15	1400	2.21