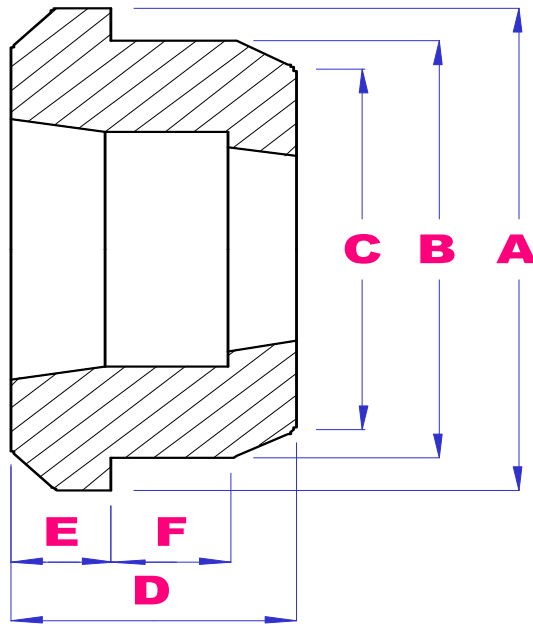


W-LOCK WELD ON HUB 'W' SERIES

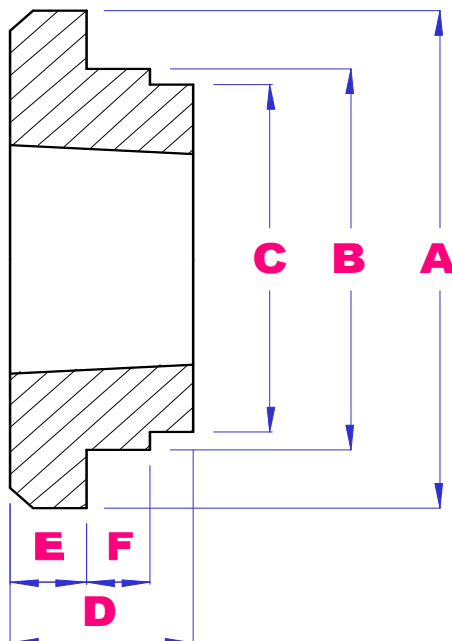


HUB SIZE	SUITS BUSH	A mm	B mm	C mm	D mm	E mm	F mm
W12	1215	73.03	63.50	62.17	38.10	15.88	9.53
W16	1615	82.55	73.03	72.24	38.10	15.88	9.53
W20	2017	101.60	88.90	88.11	44.45	19.05	14.45
W25	2517	127.00	111.13	110.34	44.45	19.05	12.70
W30	3030	149.86	133.35	132.56	76.20	25.40	19.05
W35	3535	184.15	158.75	157.96	88.90	31.75	25.4
W40	4040	225.43	196.85	196.06	101.60	31.75	31.75
W45	4545	254.00	222.25	221.46	114.30	38.10	38.10



-LOCK

WELD ON HUB 'WH' SERIES



HUB SIZE	SUITS BUSH	A mm	B mm	C mm	D mm	E mm	F mm
WH12	1210	70.0	65.0	64.5	25.0	9.0	10.0
WH16	1610	80.0	75.0	74.5	25.0	9.0	10.0
WH20	2012	95.0	90.0	89.5	32.0	12.0	12.0
WH25	2517	115.0	110.0	109.5	44.0	19.0	15.0
WH30	3020	145.0	140.0	139.5	50.0	20.0	15.0
WH35	3525	190.0	180.0	179.5	65.0	25.0	25.0
WH40	4040	200.0	190.0	189.5	101.0	32.0	30.0
WH45	4545	210.0	200.0	199.5	114.0	40.0	30.0
WH50	5050	230.0	220.0	219.5	127.0	40.0	35.0

PART NUMBER EXAMPLE

WOH-WH12

