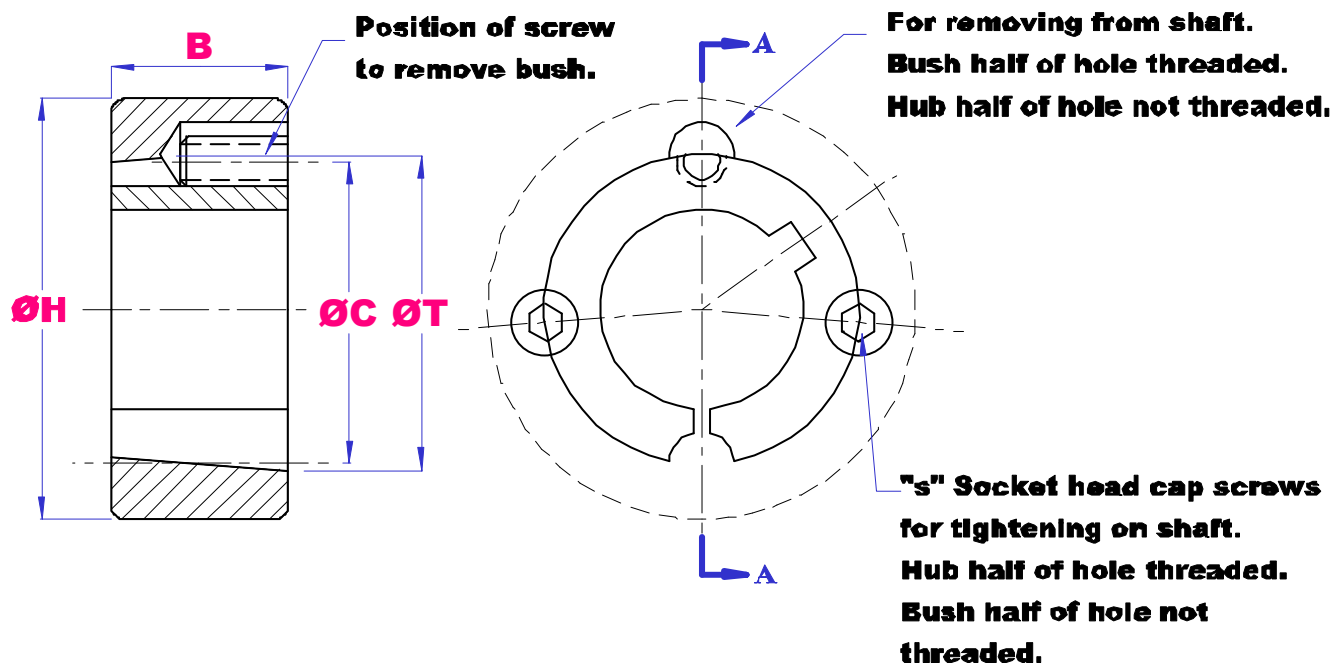




TAPERLOCK BUSH DIMENSIONS 1008 – 3030



BUSH SIZE	T mm	B mm	H mm <small>(minimum hub diameter)</small>	C mm	SET SCREW (BSW)
1008	35.2	22.2	60.3	33.7	1/4 X 1/2
1108	38.4	22.2	63.5	36.9	1/4 X 1/2
1210	47.6	25.4	92.1	44.5	3/8 X 5/8
1215	47.6	38.1	79.4	44.5	3/8 X 5/8
1310	50.8	25.4	95.3	47.6	3/8 X 5/8
1610	57.2	25.4	101.6	54.0	3/8 X 5/8
1615	57.2	38.1	88.9	54.0	3/8 X 5/8
2012	69.9	31.8	120.7	66.7	7/16 X 7/8
2517	85.7	44.5	139.7	82.6	1/2 X 1
2525	85.7	63.5	120.7	82.6	3/8 X 1
3020	108.0	50.8	177.8	101.6	5/8 X 1.1/4
3030	108.0	76.2	158.8	101.6	7/8 X 1.1/4





TAPER BUSH STANDARD SHAFT SIZES

BUSH	STANDARD BORE SIZES	
1008	MM INCH	11, 12, 14, 15, 16, 18, 19, 20, 22, 24, 25 3/8, 1/2, 5/8, 3/4, 7/8, 1
1108	MM INCH	11, 12, 14, 15, 16, 18, 19, 20, 22, 24, 25, 28 3/8, 1/2, 9/16, 5/8, 3/4, 7/8, 15/16, 1, 1.1/16, 1.1/8
1210	MM INCH	12, 14, 15, 16, 18, 19, 20, 22, 24, 25, 26, 28, 30, 32 1/2, 9/16, 5/8, 11/16, 3/4, 13/16, 7/8, 1, 1.1/16, 1.1/8, 1.3/16, 1.1/4
1215	MM INCH	12, 14, 15, 16, 18, 19, 20, 22, 24, 25, 26, 28, 30, 32 1/2, 9/16, 5/8, 11/16, 3/4, 13/16, 7/8, 1, 1.1/16, 1.1/8, 1.3/16, 1.1/4
1310	MM INCH	14, 15, 16, 18, 19, 20, 22, 24, 25, 28, 30, 32 1/2, 5/8, 3/4, 7/8, 1, 1.1/8, 1.1/4
1610	MM INCH	12, 14, 15, 16, 18, 19, 20, 22, 24, 25, 28, 30, 32, 35, 38, 40, 42 1/2, 9/16, 5/8, 3/4, 13/16, 7/8, 1, 1.1/16, 1.1/8, 1.1/4, 1.5/16, 1.3/8, 1.1/2, 1.5/8
1615	MM INCH INCH	12, 14, 15, 16, 18, 19, 20, 22, 24, 25, 28, 30, 32, 35, 38, 40, 42 1/2, 9/16, 5/8, 11/16, 3/4, 13/16, 7/8, 15/16, 1, 1.1/16, 1.1/8, 1.3/16, 1.1/4, 1.5/16, 1.3/8, 1.1/2, 1.5/8
2012	MM INCH	16, 18, 19, 20, 22, 24, 25, 28, 30, 32, 35, 38, 40, 42, 45, 48, 50 3/4, 7/8, 1, 1.1/8, 1.1/4, 1.3/8, 1.1/2, 1.5/8, 1.3/4, 1.7/8, 2
2017	MM INCH	16, 18, 19, 20, 22, 24, 25, 28, 30, 32, 35, 38, 40, 42, 45, 48, 50 3/4, 13/16, 7/8, 15/16, 1, 1.1/16, 1.1/8, 1.1/4, 1.5/16, 1.3/8, 1.1/2, 1.5/8, 1.3/4, 1.7/8, 2
2517	MM INCH	18, 19, 20, 22, 24, 25, 28, 30, 32, 35, 38, 40, 42, 45, 48, 50, 55, 60 3/4, 7/8, 1, 1.1/8, 1.1/4, 1.3/8, 1.1/2, 1.5/8, 1.3/4, 1.7/8, 2, 2.1/8, 2.1/4, 2.3/8, 2.1/2
3020	MM INCH INCH	25, 28, 30, 32, 35, 38, 40, 42, 45, 48, 50, 55, 60, 65, 70, 75 1, 1.1/8, 1.1/4, 1.3/8, 1.1/2, 1.3/4, 1.5/8, 1.7/8, 2, 2.1/8, 2.1/4, 2.3/8, 2.1/2, 2.5/8, 2.3/4, 2.7/8, 3
3030	MM INCH INCH	25, 28, 30, 32, 35, 38, 40, 42, 45, 48, 50, 55, 60, 65, 70, 75 1, 1.1/8, 1.1/4, 1.3/8, 1.1/2, 1.5/8, 1.3/4, 1.7/8, 2, 2.1/8, 2.1/4, 2.3/8, 2.1/2, 2.5/8, 2.3/4, 2.7/8, 3
3535	MM INCH INCH	35, 38, 40, 42, 45, 48, 50, 55, 60, 65, 70, 75, 80, 85, 90 1.3/8, 1.1/2, 1.5/8, 1.3/4, 1.7/8, 2, 2.1/8, 2.1/4, 2.3/8, 2.1/2, 2.5/8, 2.3/4, 2.7/8, 3, 3.1/8, 3.1/4, 3.3/8, 3.1/2,
4030	MM INCH	40, 42, 45, 48, 50, 55, 60, 65, 70, 75, 80, 85, 90, 95, 100 1.3/8, 1.1/2, 1.3/4, 1.7/8, 2, 2.1/8, 2.1/4, 2.1/2, 2.5/8, 2.3/4, 2.7/8, 3, 3.1/4, 3.1/2, 3.3/4, 4
4040	MM INCH	40, 42, 45, 48, 50, 55, 60, 65, 70, 75, 80, 85, 90, 95, 100 1.3/8, 1.1/2, 1.3/4, 1.7/8, 2, 2.1/8, 2.1/4, 2.1/2, 2.5/8, 2.3/4, 2.7/8, 3, 3.1/4, 3.1/2, 3.3/4, 4
4545	MM INCH	60, 65, 70, 75, 80, 85, 90, 95, 100, 105, 110 2.1/4, 2.3/8, 2.1/2, 2.3/4, 2.7/8, 3, 3.1/8, 3.1/4, 3.3/8, 3.1/2, 3.3/4, 4, 4.1/4, 4.1/2
5050	MM INCH	70, 75, 80, 85, 90, 95, 100, 110, 115, 120, 125 2.3/4, 2.7/8, 3, 3.1/4, 3.1/2, 3.3/4, 4, 4.1/4, 4.1/2, 4.3/4, 5

PART NUMBER EXAMPLE

TL2517-50MM

