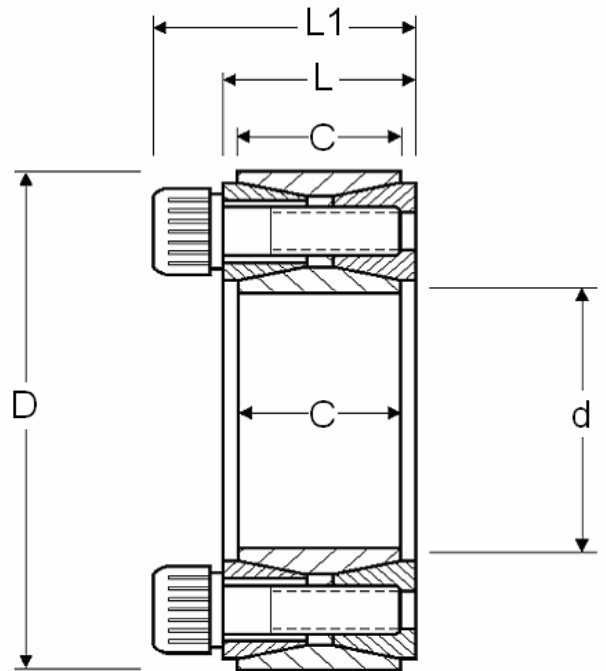


# Z2 SERIES

## LOCKING ASSEMBLIES

**Ma** = screw tightening torque  
**Ft** = axial holding force when  $Mt=0$   
**Mt** = transmissible torque when  $Ft=0$   
**Pf** = specific pressure on mating shaft and hub

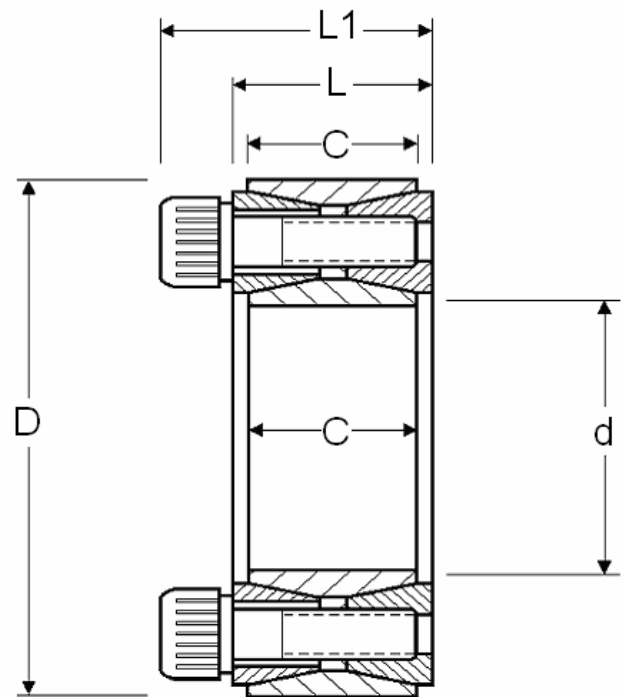


DIMENSIONS						SCREW			CAPACITIES				
Z - Lock number	d	D	C	L	L1	Size	Qty	Ma Nm	Ft kN	Mt kNm	Pf-N/mm2 Shaft	hub	Wgt kg
Z2-20X47	20	47	17	20	27.5	M6x18	8	17	32	0.32	255	110	0.24
Z2-25X50	25	50	17	20	27.5	M6x18	9	17	36	0.36	230	116	0.25
Z2-30X55	30	55	17	20	27.5	M6x18	10	17	40	0.60	212	116	0.29
Z2-35X60	35	60	17	20	27.5	M6x18	12	17	48	0.85	219	128	0.32
Z2-38X63	38	63	17	20	27.5	M6x18	14	17	52	0.93	219	134	0.33
Z2-40X65	40	65	17	20	27.5	M6x18	14	17	55	1.10	219	134	0.34
Z2-42X72	42	72	20	24	33.5	M8x22	12	41	81	1.38	228	144	0.48
Z2-45X75	45	75	20	24	33.5	M8x22	12	41	84	1.89	246	147	0.57
Z2-50X80	50	80	20	24	33.5	M8x22	12	41	83	2.06	223	135	0.60
Z2-55X85	55	85	20	24	33.5	M8x22	14	41	97	2.65	234	152	0.63
Z2-60X90	60	90	20	24	33.5	M8x22	14	41	97	2.89	210	140	0.69
Z2-65X95	65	95	20	24	33.5	M8x22	16	41	109	3.56	223	152	0.73
Z2-70X110	70	110	24	28	39.5	M10x25	14	83	156	5.45	249	154	1.26
Z2-75X115	75	115	24	28	39.5	M10x25	14	83	155	5.81	231	148	1.33
Z2-80X120	80	120	24	28	39.5	M10x25	14	83	155	6.15	213	142	1.40
Z2-85X125	85	125	24	28	39.5	M10x25	16	83	175	7.44	231	154	1.49
Z2-90X130	90	130	24	28	39.5	M10x25	16	83	174	7.80	213	148	1.53
Z2-95X135	95	135	24	28	39.5	M10x25	18	83	198	9.35	231	160	1.62
Z2-100X145	100	145	29	33	47	M12x30	14	145	223	11.1	226	157	2.01
Z2-110X155	110	155	29	33	47	M12x30	14	145	221	12.2	209	145	2.15
Z2-120X165	120	165	29	33	47	M12x30	16	145	263	15.2	215	157	2.35
Z2-125X170	125	170	29	33	47	M12x30	18	145	285	18.7	191	142	2.95
Z2-130X180	130	180	34	38	52	M12x35	20	145	315	20.4	191	133	3.51
Z2-140X190	140	190	34	38	52	M12x35	22	145	345	24.2	191	145	3.85
Z2-150X200	150	200	34	38	52	M12x35	24	145	376	28.0	197	145	4.07
Z2-160X210	160	210	34	38	52	M12x35	26	145	406	32.3	197	151	4.30
Z2-170x225	170	225	38	44	60	M14x45	22	230	467	39.7	194	145	5.78
Z2-180x235	180	235	38	44	60	M14x45	24	230	505	45.7	200	151	6.05
Z2-190x250	190	250	46	52	68	M14x45	28	230	591	56.3	182	139	8.25

# Z2 SERIES

## LOCKING ASSEMBLIES

**Ma** = screw tightening torque  
**Ft** = axial holding force when  $Mt=0$   
**Mt** = transmissible torque when  $Ft=0$   
**Pf** = specific pressure on mating shaft and hub



DIMENSIONS						SCREWS		CAPACITIES					
Z - Lock number	d	D	C	L	L1	Size	Qty	Ma Nm	Ft kN	Mt kNm	Pf-N/mm2 Shaft	hub	Wgt kg
Z2-200x260	200	260	46	52	68	M14x45	30	230	630	63.5	182	139	8.65
Z2-220x285	220	285	50	56	74	M16x50	26	355	744	81.7	181	138	11.2
Z2-240x305	240	305	50	56	74	M16x50	30	355	862	103	193	150	12.2
Z2-260x325	260	325	50	56	74	M16x50	34	355	960	124	199	156	13.2
Z2-280x355	280	355	60	66	86.5	M18x60	32	485	1092	153	174	138	19.2
Z2-300x375	300	375	60	66	86.5	M18x60	36	485	1215	183	180	144	20.5
Z2-320x405	320	405	72	78	100.5	M20x70	36	690	1558	249	178	143	29.6
Z2-340x425	340	425	72	78	100.5	M20x70	36	690	1558	266	172	137	31.1
Z2-360x455	360	455	84	90	116	M22x80	36	930	1940	350	173	137	42.2
Z2-380x475	380	475	84	90	116	M22x80	36	930	1935	366	161	131	44
Z2-400x495	400	495	84	90	116	M22x80	36	930	1930	384	155	125	46
Z2-420x515	420	515	84	90	116	M22x80	40	930	2120	445	161	131	50
Z2-440x545	440	545	96	102	130	M24x90	40	1200	2470	545	150	126	64.6
Z2-450x555	450	555	96	102	130	M24x90	40	1200	2460	555	150	124	65
Z2-460x565	460	565	96	102	130	M24x90	40	1200	2450	565	150	120	67.4
Z2-480x585	480	585	96	102	130	M24x90	42	1200	2550	619	150	120	71
Z2-500x605	500	605	96	102	130	M24x90	44	1200	2650	668	150	120	73
Z2-530x640	530	640	96	102	130	M24x90	45	1200	2790	740	145	118	83.6
Z2-560x670	560	670	96	102	130	M24x90	48	1200	2930	816	142	117	85
Z2-600x710	600	710	96	102	130	M24x90	50	1200	3090	930	142	117	91
Z2-630x740	630	740	96	102	130	M24x90	52	1200	3210	1010	140	115	94
Z2-670x780	670	780	96	102	130	M24x90	60	1200	3385	1130	138	112	101
Z2-710x820	710	820	96	102	130	M24x90	62	1200	3565	1260	135	110	106
Z2-750x860	750	860	96	102	130	M24x90	66	1200	3750	1410	135	110	112
Z2-800x910	800	910	96	102	130	M24x90	70	1200	3910	1560	130	108	118
Z2-850x960	850	960	96	102	130	M24x90	70	1200	4200	1785	133	110	125
Z2-900x1010	900	1000	96	102	130	M24x90	75	1200	4410	1980	130	108	132
Z2-950x1060	950	1060	96	102	130	M24x90	80	1200	4650	2205	130	108	139
Z2-1000x1110	1000	1110	96	102	130	M24x90	82	1200	4800	2400	125	107	146