

Z2 SERIES

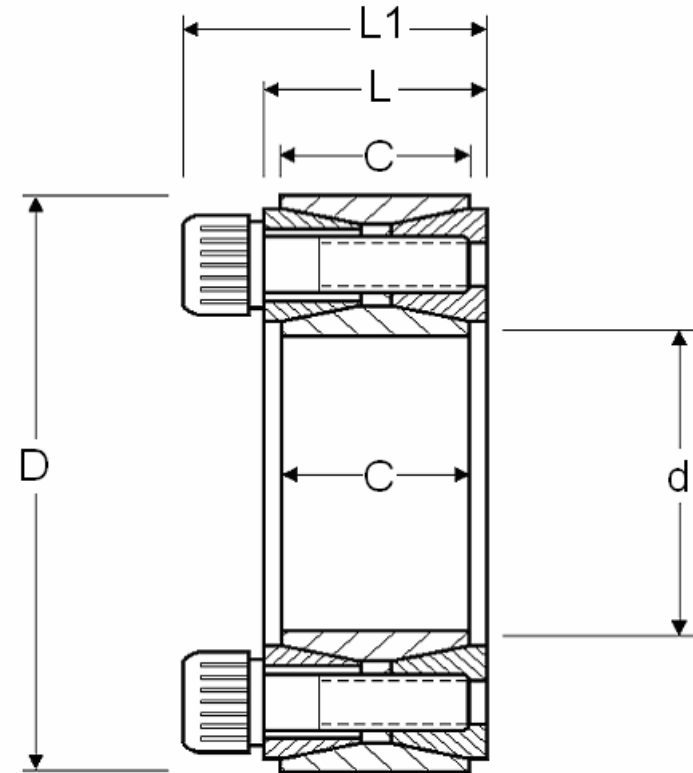
LOCKING ASSEMBLIES

Ma = screw tightening torque

Ft = axial holding force when $M_t=0$

Mt = transmissible torque when $F_t=0$

Pf = specific pressure on mating shaft and hub



DIMENSIONS						SCREW			CAPACITIES				
Z - Lock number	d	D	C	L	L1	Size	Qty	Ma Nm	Ft kN	Mt kNm	Pf-N/mm2 Shaft hub		Wgt kg
Z2-20X47	20	47	17	20	27.5	M6x18	8	17	32	0.32	255	110	0.24
Z2-25X50	25	50	17	20	27.5	M6x18	9	17	36	0.36	230	116	0.25
Z2-30X55	30	55	17	20	27.5	M6x18	10	17	40	0.60	212	116	0.29
Z2-35X60	35	60	17	20	27.5	M6x18	12	17	48	0.85	219	128	0.32
Z2-38X63	38	63	17	20	27.5	M6x18	14	17	52	0.93	219	134	0.33
Z2-40X65	40	65	17	20	27.5	M6x18	14	17	55	1.10	219	134	0.34
Z2-42X72	42	72	20	24	33.5	M8x22	12	41	81	1.38	228	144	0.48

Z2-45X75	45	75	20	24	33.5	M8x22	12	41	84	1.89	246	147	0.57
Z2-50X80	50	80	20	24	33.5	M8x22	12	41	83	2.06	223	135	0.60
Z2-55X85	55	85	20	24	33.5	M8x22	14	41	97	2.65	234	152	0.63
Z2-60X90	60	90	20	24	33.5	M8x22	14	41	97	2.89	210	140	0.69
Z2-65X95	65	95	20	24	33.5	M8x22	16	41	109	3.56	223	152	0.73
Z2-70X110	70	110	24	28	39.5	M10x25	14	83	156	5.45	249	154	1.26
Z2-75X115	75	115	24	28	39.5	M10x25	14	83	155	5.81	231	148	1.33
Z2-80X120	80	120	24	28	39.5	M10x25	14	83	155	6.15	213	142	1.40
Z2-85X125	85	125	24	28	39.5	M10x25	16	83	175	7.44	231	154	1.49
Z2-90X130	90	130	24	28	39.5	M10x25	16	83	174	7.80	213	148	1.53
Z2-95X135	95	135	24	28	39.5	M10x25	18	83	198	9.35	231	160	1.62
Z2-100X145	100	145	29	33	47	M12x30	14	145	223	11.1	226	157	2.01
Z2-110X155	110	155	29	33	47	M12x30	14	145	221	12.2	209	145	2.15
Z2-120X165	120	165	29	33	47	M12x30	16	145	263	15.2	215	157	2.35
Z2-125X170	125	170	29	33	47	M12x30	18	145	285	18.7	191	142	2.95
Z2-130X180	130	180	34	38	52	M12x35	20	145	315	20.4	191	133	3.51
Z2-140X190	140	190	34	38	52	M12x35	22	145	345	24.2	191	145	3.85
Z2-150X200	150	200	34	38	52	M12x35	24	145	376	28.0	197	145	4.07
Z2-160X210	160	210	34	38	52	M12x35	26	145	406	32.3	197	151	4.30
Z2-170x225	170	225	38	44	60	M14x45	22	230	467	39.7	194	145	5.78
Z2-180x235	180	235	38	44	60	M14x45	24	230	505	45.7	200	151	6.05
Z2-190x250	190	250	46	52	68	M14x45	28	230	591	56.3	182	139	8.25