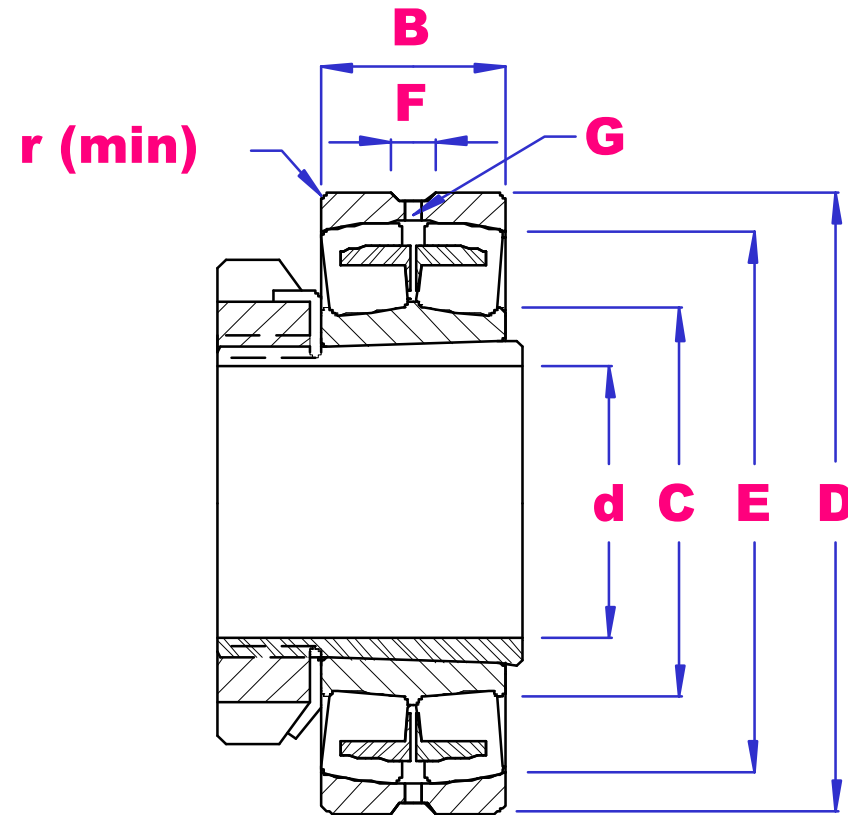


UBC



SPHERICAL ROLLER BEARINGS TAPERED BORE



PART NO	d	D	B	r min	E	F	G	SLEEVE	LOAD RATING		SPEED RATING(rpm)		WGT kg
									DkN	SkN	grease	oil	
23952K	240	360	75	2.1	328	12	6.0	H3952	902	1750	1100	1500	21.6
23052K		400	104	4.0	357	16.7	7.0	OH3052	1350	2550	900	1200	49.8
24052K30		400	140	4.0	347	11.1	6.0	-	1710	3500	700	900	64.9
23152K		440	144	4.0	379	16.7	9.0	OH3152	2190	4050	800	1000	88.9
24152K30		440	180	4.0	366	13.9	8.0	-	2420	4350	430	530	115
22252K		480	130	5.0	414	22.3	12.0	OH3152	2280	3600	850	1100	106
23252K		480	174	5.0	404	22.3	8.0	H2352	2800	4750	630	800	141
22352K		540	165	6.0	455	22.3	8.0	H2352	3080	4750	630	800	185
23856K	260	350	52	2.0	328	8.3	4.5	-	435	1230	1200	1500	11.5
23956K		380	75	2.1	346	12.0	6.0	H3956	803	1850	1000	1400	25.7
23056K		420	106	4.0	377	16.7	6.0	OH3056	1450	2850	850	1100	56.8
24056K30		420	140	4.0	366	11.1	6.0	-	1780	3700	670	850	69.2
23156K		460	156	5.0	400	16.7	8.0	OH3156	2190	4150	800	1000	104
24156K30		460	180	5.0	393	13.9	8.0	-	2530	4750	400	500	119

22256K		500	130	5.0	435	22.3	8.0	OH3156	2190	3600	850	1100	118
23256K		500	176	5.0	424	22.3	8.0	H2356	2840	5100	600	750	147
22356K		580	175	6.0	485	22.3	8.0	H2356	3520	5700	600	750	229
23860K	280	380	60	3.0	357	12.0	6.0	-	640	1650	950	1400	18.2
23960K		420	90	3.0	382	15.0	6.0	H3960	1160	2500	950	1300	40.1
23060K		460	118	4.0	409	16.7	9.0	OH3060	1770	3450	800	1000	75.8
24060K30		460	160	4.0	399	13.9	9.0	-	2220	4700	600	700	99
23160K		500	160	5.0	433	16.7	9.0	OH3160	2680	4750	670	850	126
24160K30		500	200	5.0	420	13.9	6.0	-	3100	6000	380	450	161
22260K		540	140	5.0	467	22.3	8.0	OH3160	2620	4300	800	1000	138
23260K		540	192	5.0	455	22.3	10.0	H2360	3300	5600	530	670	192
23864K	300	400	60	3.0	376	13.9	6.0	-	670	1620	920	1280	20.3
23964K		440	90	3.0	402	15.0	6.0	H3964	1200	2650	900	1200	42.7
23064K		480	121	4.0	431	16.7	8.0	OH3064	1930	4200	800	1000	84.8
24064K30		480	160	4.0	421	22.3	8.0	-	2480	5100	560	700	106
23164K		540	176	5.0	465	22.3	8.0	OH3164	3150	5700	630	800	198
24164K30		540	210	5.0	455	16.7	9.0	-	3560	6500	340	430	206
22264K		580	150	5.0	502	22.3	8.0	OH3164	2770	4350	700	900	175
23264K		580	208	5.0	490	24.0	10.0	H2364	3900	6800	500	630	253
23968K	320	460	90	3.0	423	15.0	6.0	H3968	1200	2700	900	1200	46.2
23068K		520	133	5.0	464	22.3	8.0	OH3068	2180	4400	700	900	115
24068K30		520	180	5.0	451	16.7	8.0	-	2710	5700	530	670	137
23168K		580	190	5.0	497	22.3	8.0	OH3168	3500	6300	600	750	211
24168K30		580	243	5.0	486	22.3	10.0	-	4400	7950	320	400	206
23268K		620	224	6.0	528	22.3	12.0	H2368	4400	7700	430	530	297
23972K	340	480	90	3.0	441	11.1	6.0	H3972	1290	2820	850	1100	46.6
23072K		540	134	5.0	486	2.3	8.0	OH3072	2280	4800	670	850	126
24072K30		540	180	5.0	474	16.7	8.0	-	2820	6100	600	750	150
23172K		600	192	5.0	518	22.3	12.0	OH3172	3580	6850	560	700	254
24172K30		600	243	5.0	511	20.0	12.0	-	5600	8400	300	380	270
23272K		650	232	6.0	547	22.3	10.0	H2372	4650	8300	400	500	335
23976K	360	520	106	4.0	476	15.0	10.0	H3976	1730	3800	800	1000	69.5
23076K		560	135	5.0	505	22.3	8.0	OH3076	2480	5000	630	800	130
24076K30		560	180	5.0	494	22.3	8.0	-	3150	6900	480	600	153
23176K		620	194	5.0	540	22.3	8.0	OH3176	3740	7350	400	500	250
24176K30		620	243	5.0	540	22.3	8.0	-	4400	9200	300	380	296
23276K		680	240	6.0	574	22.3	10.0	H2376	4800	9200	380	480	386