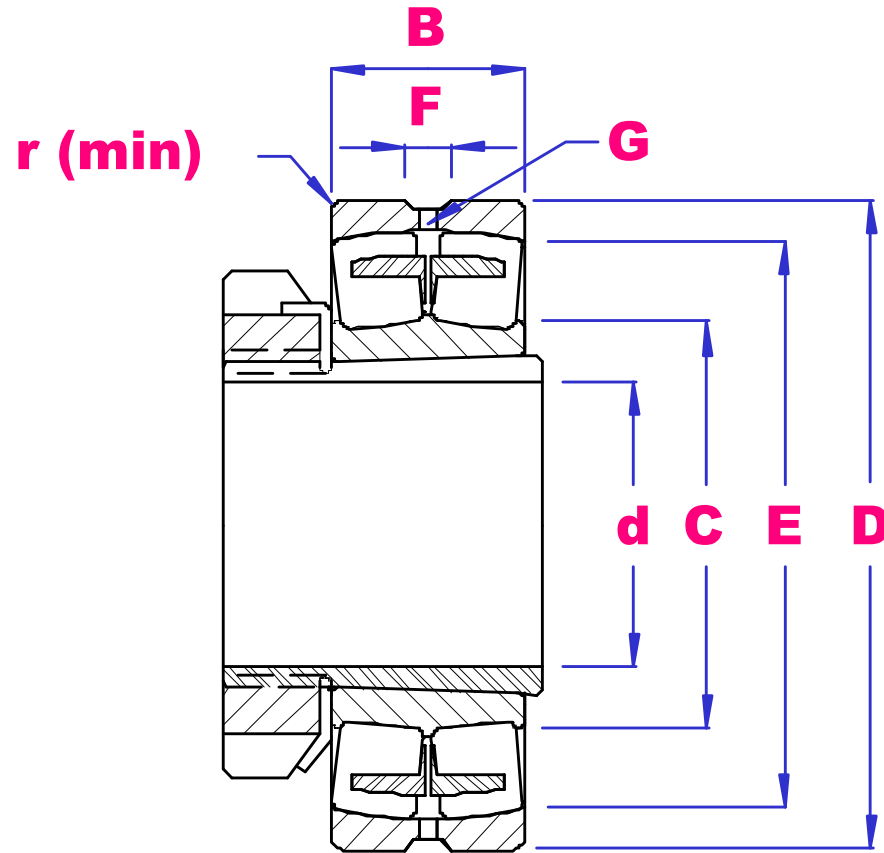


UBC



SPHERICAL ROLLER BEARINGS TAPERED BORE



PART NO	d	D	B	r min	C	E	F	G	SLEEVE	LOAD RATING		SPEED RATING(rpm)		WGT kg
										DkN	SkN	grease	oil	
22205K	20	52	18	1.0	31	46	4.8	2.0	H305	41	43	8000	10000	0.15
22206K	25	62	20	1.0	36	56	4.8	2.0	H306	55	59	6600	8600	0.25
21306K		72	19	1.1	37	65	-	-	H306	52	51	4500	6000	0.38
22207K	30	72	23	1.1	42	65	4.8	2.0	H307	63.5	82	6400	7800	0.38
21307K		80	21	1.5	44	71	-	-	H307	70	75	4000	5800	0.51
22208K	35	80	23	1.1	50.4	69	5.5	2.0	H308	68.5	74.5	6000	7500	0.53
21308K		90	23	1.5	56	74	-	-	H308	67.5	73.5	3800	6000	0.71
22308K		90	33	1.5	56	74	5.5	2.5	H2308	105	130	4500	5600	1.01
22209K	40	85	23	1.1	57.6	73	5.5	2.0	H309	80.5	95	5300	6700	0.63
21309K		100	25	1.5	63	81.4	5.5	2.0	H309	80.5	92	4500	5500	0.95
22309K		100	36	1.5	63	81.4	5.5	2.5	H2309	127	168	3800	4800	1.52

22210K	45	90	23	1.1	62.2	78.3	5.5	2.0	H310	81	95	5000	6300	0.63
21310K		110	27	2.0	69	90.6	5.5	2.0	H310	95	96	4200	4800	1.24
22310K		110	40	2.0	69	90.6	5.5	2.5	H2310	157	208	3400	4300	2.17
22211K	50	100	25	1.5	68.8	87.3	5.5	2.0	H311	90.5	119	4500	5600	0.88
21311K		120	29	2.0	75	99.5	5.5	2.0	H311	120	132	3800	4300	1.62
22311K		120	43	2.0	75	99.5	5.5	2.5	H2311	175	230	3200	4000	2.62
22212K	55	110	28	1.5	75.2	95	5.5	2.0	H312	110	154	4000	5000	1.02
21312K		130	31	2.1	81.4	108	5.5	2.0	H312	163	152	3400	4000	1.98
22312K		130	46	2.1	81.4	108	5.5	2.5	H2312	212	284	3000	3800	3.33
22213K	60	120	31	1.5	81.5	103	5.5	2.5	H313	135	193	3800	4800	1.56
21313K		140	33	2.1	88.6	119	5.5	2.5	H313	157	200	2800	3600	2.58
22313K		140	48	2.1	88.6	116	5.5	3.0	H2313	238	325	2600	3400	4.91
22215K	65	130	31	1.5	92	114	5.5	2.5	H315	139	208	3400	4300	1.71
21315K		160	37	2.1	101	133	5.5	2.5	H315	236	280	2400	3200	3.62
22315K		160	55	2.1	101	133	8.3	4.0	H2315	325	420	2200	3000	5.44
22216K	70	140	33	2.0	98.9	98.9	5.5	2.5	H316	150	225	3200	4000	2.11
21316K		170	39	2.1	109	109	5.5	2.5	H316	255	315	2200	3000	4.32
22316K		170	58	2.1	109	109	8.3	4.0	H2316	345	495	2000	2800	7.4
22217K	75	150	36	2.0	105	132	6.5	3.0	H317	175	254	3000	3800	2.71
21317K		180	41	3.0	115	150	6.5	3.0	H317	290	360	2100	2400	5.22
22317K		180	60	3.0	115	150	8.3	4.0	H2317	375	540	1900	2600	8.11
22218K	80	160	40	2.0	111	139	8.3	2.5	H318	188	258	2600	3400	3.45
23218K		160	52.4	2.0	112	136	5.5	2.5	H2318	338	475	1900	2600	4.75
21318K		190	43	3.0	123	159	5.5	2.5	H318	315	400	1900	2600	6.22
22318K		190	64	3.0	123	159	8.3	5.0	H2318	420	625	1800	2400	11.3
22219K	85	170	43	2.1	119	148	8.3	3.0	H319	245	375	2400	3200	4.57
21319K		200	45	3.0	128	167	8.3	3.0	H319	330	420	1900	2600	7.45
22319K		200	67	3.0	128	167	8.3	5.0	H2319	465	685	1800	2400	10.5
23020K	90	150	37	1.5	116	135	5.5	3.0	H3020	215	400	2400	3200	2.55
23120K		165	52	2.0	121	143	5.5	3.0	H3120	287	510	2000	2800	4.42
22220K		180	46	2.1	124	156	8.3	3.0	H320	277	525	2200	3000	5.11
23220K		180	60.3	2.1	125	153	8.3	4.0	H3220	400	570	1700	2200	6.35
21320K		215	47	3.0	138	179	8.3	5.0	H320	360	495	1700	2200	9.15
22320K		215	73	3.0	138	179	8.3	5.0	H2320	540	815	1700	2200	13.6