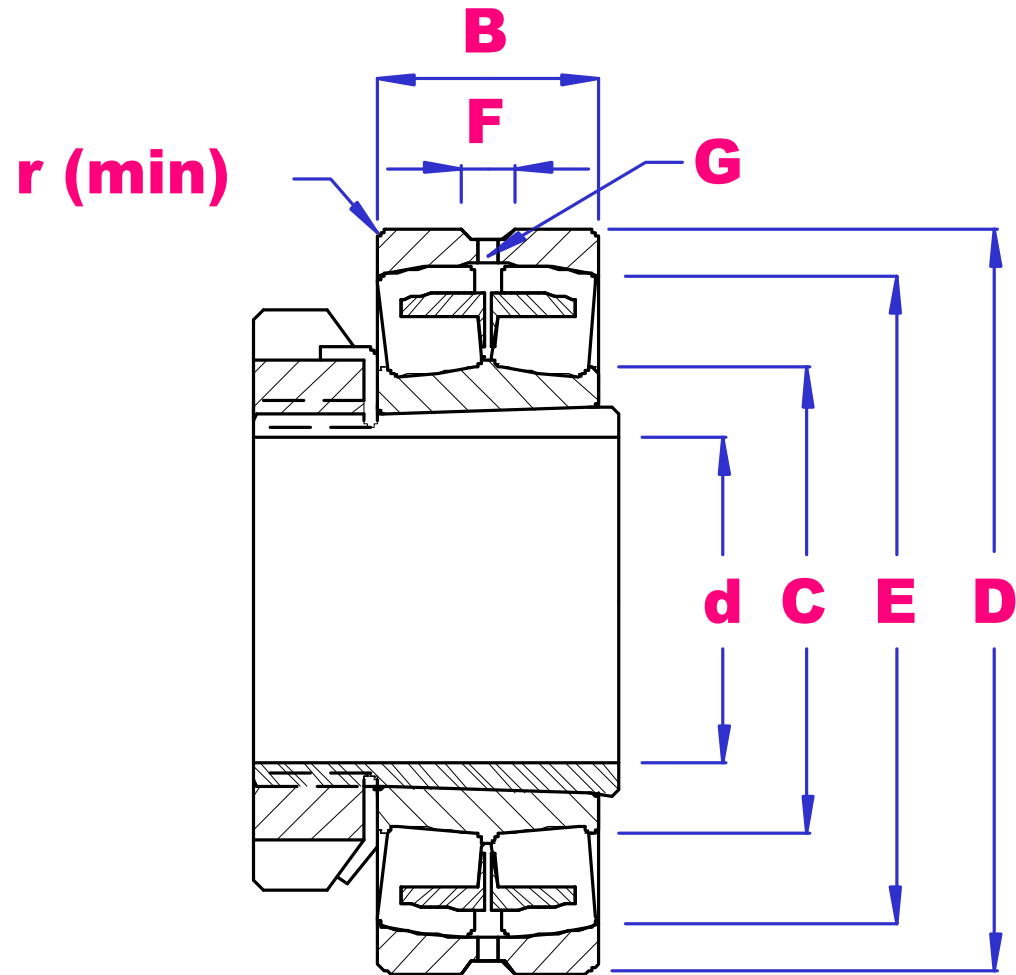


UBC



**SPHERICAL ROLLER
BEARINGS
TAPERED BORE**



PART NO	d	D	B	r min	E	F	G	SLEEVE	LOAD RATING		SPEED RATING(rpm)		WGT kg
									DkN	SkN	grease	oil	
23022K	100	170	45	2.0	150	7.5	3.0	H3022	253	460	2200	3000	3.54
23122K		180	56	2.0	156	7.5	3.0	H3122	325	580	1900	2600	5.73
24122K30		180	69	2.0	153	7.5	3.0	-	425	750	1000	1400	6.92
22222K		200	53	2.1	173	8.3	4.0	H322	385	625	2000	2800	7.24
23222K		200	69.8	2.1	168	12	5.0	H2322	490	720	1600	2000	9.83
22322K		240	80	3.0	197	13.9	6.0	H2322	630	955	1600	2000	18.7

23024K	110	180	46	2.0	162	5.5	3.0	H3024	263	495	2000	2800	4.32
24024K30		180	60	2.0	158	5.5	3.0	-	325	660	1600	2000	5.83
23124K		200	62	2.0	174	5.5	3.0	H3124	405	715	1800	2400	8.22
24124K30		200	80	2.0	167	5.5	3.0	-	495	925	900	1200	10.6
22224K		215	58	2.1	187	11.1	4.0	H3124	425	680	1900	2600	9.76
23224K		215	76	2.1	182	8.3	5.0	H2324	535	940	1500	1900	12.1
22324K		260	86	3.0	215	13.9	6.0	H2324	720	1100	1400	1800	23.3
23026K	115	200	52	2.0	179	9.5	4.0	H3026	340	350	1900	2600	7.05
24026K30		200	69	2.0	185	9.5	4.0	-	405	715	1400	1800	8.22
23126K		210	64	2.0	183	8.3	4.0	H3126	430	790	1700	2200	10.7
24126K30		210	80	3.0	200	8.3	4.0	-	530	920	850	1100	11.1
22226K		230	64	3.0	200	10	5.0	H3126	490	805	1800	2400	12.4
23226K		230	80	3.0	194	12	5.0	H3226	670	1020	1300	1700	15.8
22326K		280	93	4.0	232	16.7	6.0	H2326	840	1300	1300	1700	18.1
23028K	125	210	53	2.0	188	8.3	4.5	H3028	365	705	1800	2400	6.68
24028K30		210	69	2.0	186	8.3	5.0	-	435	790	1300	1600	8.95
23128K		225	68	2.1	196	8.3	4.5	H3128	490	935	1600	2000	10.9
24128K30		225	85	2.1	192	8.3	4.5	-	580	1180	850	1100	13.5
22228K		250	68	3.0	218	11.1	5.0	H3128	560	930	1700	2200	16.2
23228K		250	88	3.0	215	15	6.0	H2328	910	1365	1200	1600	19.7
22328K		300	102	4.0	249	16.7	7.0	H2328	1210	1950	1100	1500	36.2
23030K	135	225	56	2.1	201	8.3	4.5	H3030	400	795	1700	2200	8.01
24030K30		225	75	2.1	196	5.5	3.0	-	500	1050	1300	1700	9.39
23130K		250	80	2.1	212	11.1	5.0	H3130	745	685	1400	1800	16.5
24130K30		250	100	2.1	218	8.3	4.5	-	855	1435	800	1000	20.1
22230K		270	73	3.0	234	12	6.0	H3130	630	1050	1600	2000	18.7
23230K		270	96	3.0	228	11.1	6.0	H2330	950	1550	1100	1500	26.6
22330K		320	108	4.0	265	16.7	9.0	H2330	1120	1810	1000	1400	41.5
23032K	140	240	60	2.1	216	8.3	5.0	OH3032	445	875	1700	2200	10.0
24032K30		240	80	2.1	209	8.3	5.0	-	570	1210	1100	1500	13.2
23132K		270	86	2.1	234	13.9	6.0	OH3132	765	1430	1300	1700	21.9
24132K30		270	109	2.1	225	8.3	4.0	-	865	1690	700	900	24.6
22232K		290	80	3.0	249	13.9	7.0	OH3132	750	1300	1500	1900	24.3
23232K		290	104	3.0	244	13.9	7.0	H2332	955	1770	1000	1400	29.2
22332K		340	114	4.0	284	16.7	7.0	H2332	1270	2050	950	1300	52.5