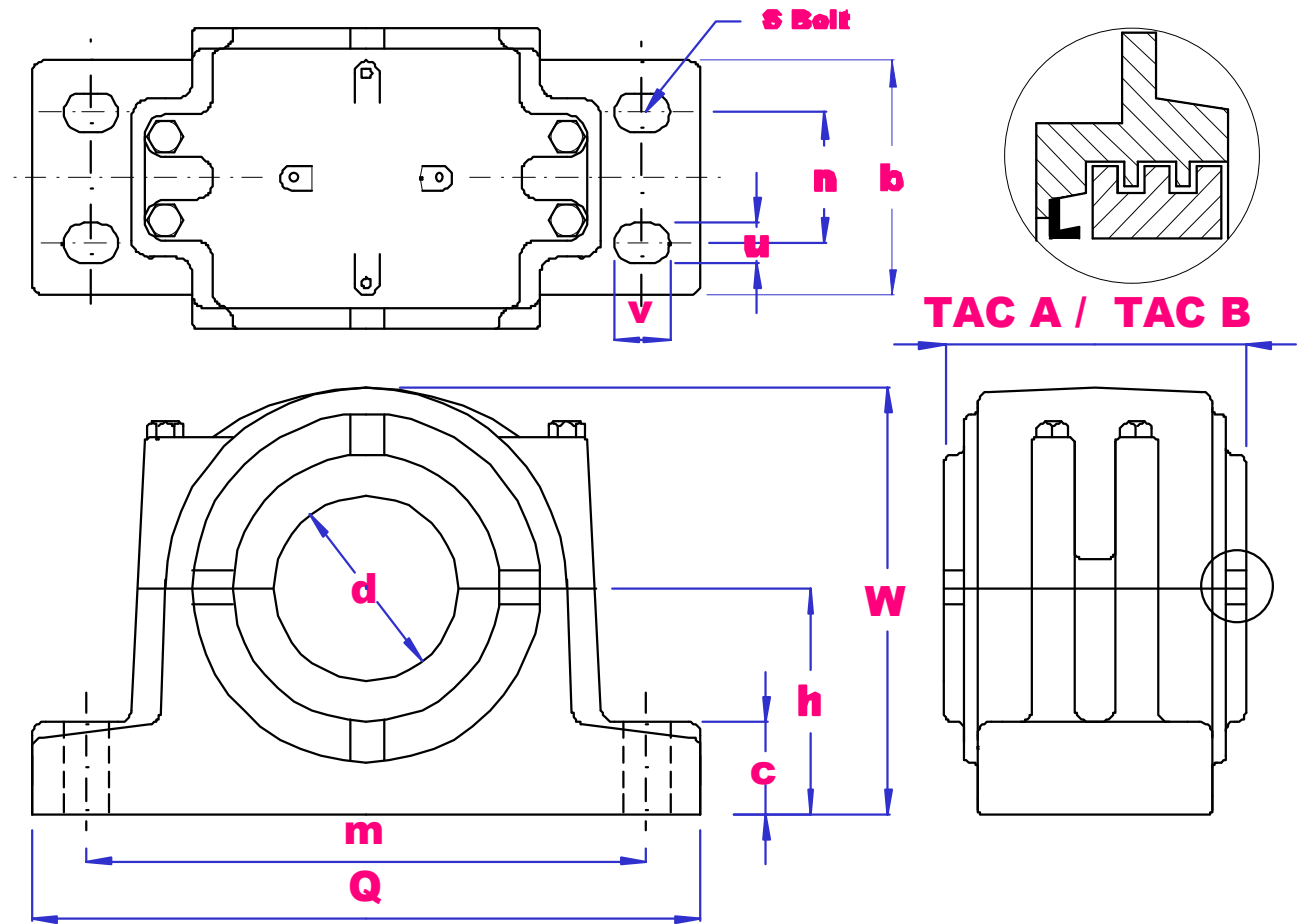


UBC



SD3100 SG TAC SG IRON HOUSINGS



HOUSING NO	d	a	b	c	h	TAC		w	m	n	s	Housing Wgt kg	Bearing	Sleeve	Fixing ring	
						A	B								size	qty
SD3134	150 6"	510	180	70	170	274	308	335	430	100	M24	70	23134K	H3134 HE3134	FR280x10	2
SD3136	160 6.1/2"	530	190	75	180	289	318	355	450	110	M24	79	23136K	H3136 HE3136	FR300x10	2
SD3138	170 6.3/4"	560	210	80	190	308	336	375	480	120	M24	100	23138K	H3138 HE3138	FR320x10	2
SD3140	180 7"	610	230	85	210	328	356	410	510	130	M30	130	23140K	H3140 HE3140	FR340x10	2
SD3144	200	640	240	90	220	339	368	435	540	140	M30	146	23144K	H3144	FR370x10	2
SD3148	220	700	260	95	240	354	388	475	600	150	M30	190	23148K	H3148	FR400x10	2
SD3152	240	770	280	100	260	370	400	515	650	160	M36	230	23152K	H3152	FR440x10	2
SD3156	260	790	280	105	280	370	400	550	670	160	M36	260	23156K	H3156	FR460x10	2
SD3160	280	830	310	110	300	403	426	590	710	190	M36	320	23160K	H3160	FR500x10	2
SD3164	300	880	330	115	320	424	448	630	750	200	M36	350	23164K	H3164	FR540x10	2
SD3168	320	965	380	120	340	464	488	670	840	240	M45	550	23168K	H3168	FR580x10	2
SD3172	340	1040	390	130	360	474	498	720	890	255	M50	560	23172K	H3172	FR600x10	2
SD3176	360	1120	400	135	380	500	520	750	980	255	M55	780	23176K	H3176	FR620x10	2
SD3180	380	1245	420	140	400	536	552	790	1050	270	M60	885	23180K	H3180	FR650x10	2