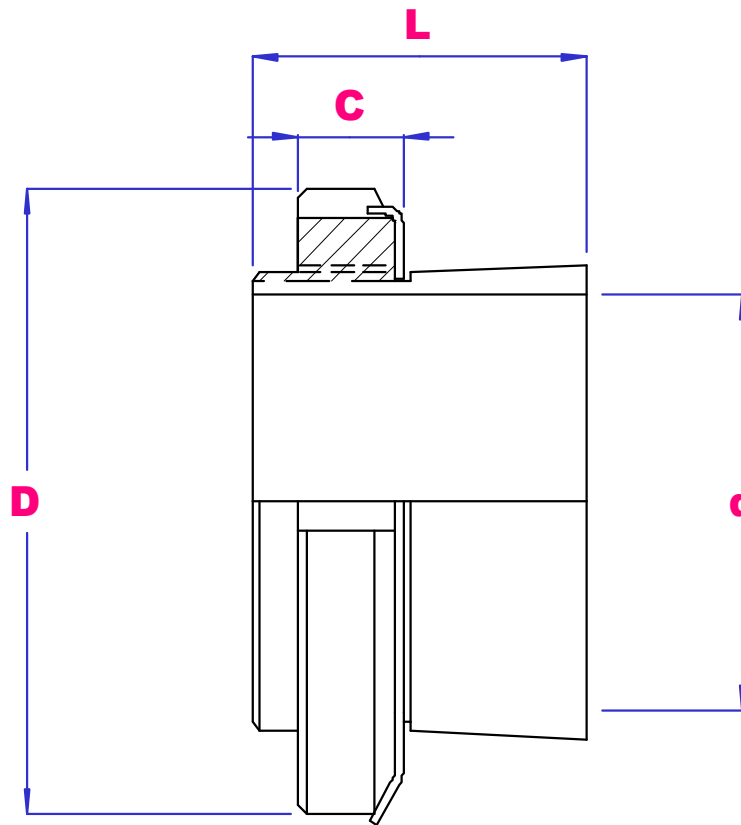


UBC



ADAPTER SLEEVES



PART NO	d mm	D mm	L mm	C mm	Thread	Wgt kg	PART NO	d mm	D mm	L mm	C mm	Thread	Wgt kg
H205	20	38	26	7	M25X1.5	0.069	H215	65	98	43	15	M75X2	0.777
H305		38	29	7	M25X1.5	0.075	H315		98	55	15	M75X2	0.826
H2305		38	35	7	M25X1.5	0.087	H2315		98	73	15	M75X2	1.16
HX2306		45	38	9	M30X1.5	0.121	HX2316		105	78	17	M80X2	1.55
H206	25	45	27	9	M30X1.5	0.091	H216	70	105	46	17	M80X2	0.876
H306		45	31	9	M30X1.5	0.100	H316		105	59	17	M80X2	1.03
H2306		45	38	9	M30X1.5	0.117	H2316		105	78	17	M80X2	1.16
HX2307		52	43	10	M35X1.5	0.195	HX2317		110	82	18	M85X2	1.85

H207	30	52	29	10	M35X1.5	0.129		H217	75	110	50	18	M85X2	1.09
H307		52	35	10	M35X1.5	0.147		H317		110	63	18	M85X2	1.16
H2307		52	43	10	M35X1.5	0.171		H2317		110	82	18	M85X2	1.55
HX2308		58	46	11	M40X1.5	0.255		HX2318		120	86	18	M90X2	1.99
H208	35	58	31	11	M40X1.5	0.171		H219	85	125	55	19	M95X2	1.45
H308		58	36	11	M40X1.5	0.185		H319		125	68	19	M95X2	1.51
H2308		58	46	11	M40X1.5	0.222		H2319		125	90	19	M95X2	2.06
HX2309		65	50	12	M45X1.5	0.315								
H209	40	65	33	12	M45X1.5	0.216		H220	90	130	58	20	M100X2	1.63
H309		65	39	12	M45X1.5	0.246		H320		130	71	20	M100X2	1.73
H2309		65	50	12	M45X1.5	0.283		H3120		130	76	20	M100X2	1.85
HX2310		70	55	13	M50X1.5	0.395		H2320		130	97	20	M100X2	2.17
H210	45	70	35	13	M50X1.5	0.216		H222	100	145	63	21	M110X2	2.03
H310		70	42	13	M50X1.5	0.301		H322		145	77	21	M110X2	2.16
H2310		70	55	13	M50X1.5	0.353		H3122		145	81	21	M110X2	2.26
HX2311		75	59	13	M55X2	0.475		H2322		145	105	21	M110X2	2.74
H211	50	75	37	13	M55X2	0.292		H3024	110	145	72	22	M120X2	1.93
H311		75	45	13	M55X2	0.351		H3124		155	88	22	M120X2	2.64
H2311		75	59	13	M55X2	0.426		H2324		155	112	22	M120X2	3.18
HX2312		80	62	13	M60X2	0.575								
H212	55	80	38	13	M60X2	0.344		H3026	115	155	80	23	M130X2	2.85
H312		80	47	13	M60X2	0.373		H3126		165	92	23	M130X2	3.66
H2312		80	62	13	M60X2	0.533		H2326		165	121	23	M130X2	4.65
HX2313		85	65	14	M65X2	0.605								
H213	60	85	40	14	M65X2	0.393		H3028	125	165	82	24	M140X2	3.16
H313		85	50	14	M65X2	0.452		H3128		180	97	24	M140X2	4.34
H2313		85	65	14	M65X2	0.553		H2328		180	131	24	M140X2	5.55
HX2314		92	68	14	M70X2	0.925								
H214	60	92	41	14	M70X2	0.603		H3030	135	180	87	26	M150X2	3.89
H314		92	52	14	M70X2	0.715		H3130		195	111	26	M150X2	5.52
H2314		92	68	14	M70X2	0.895		H2330		195	139	26	M150X2	6.63