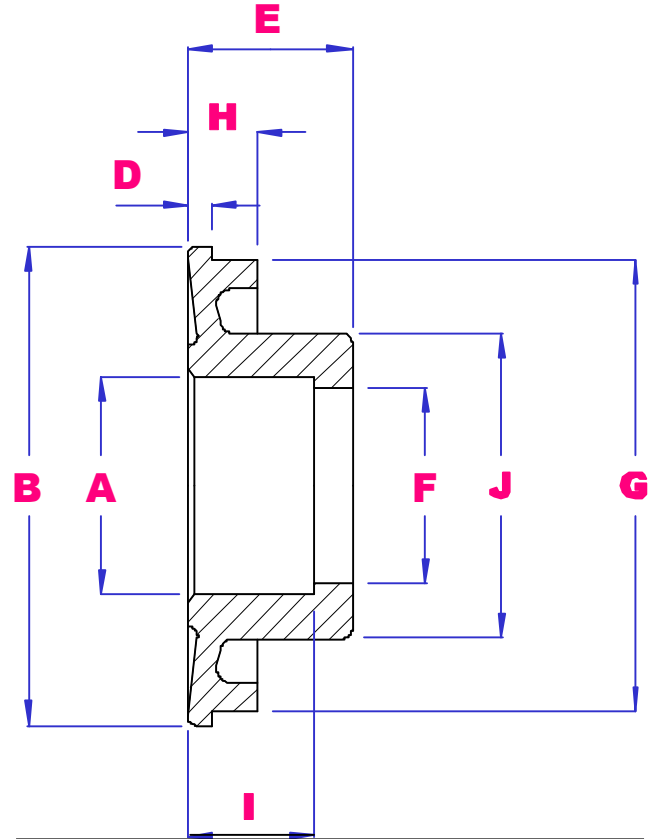
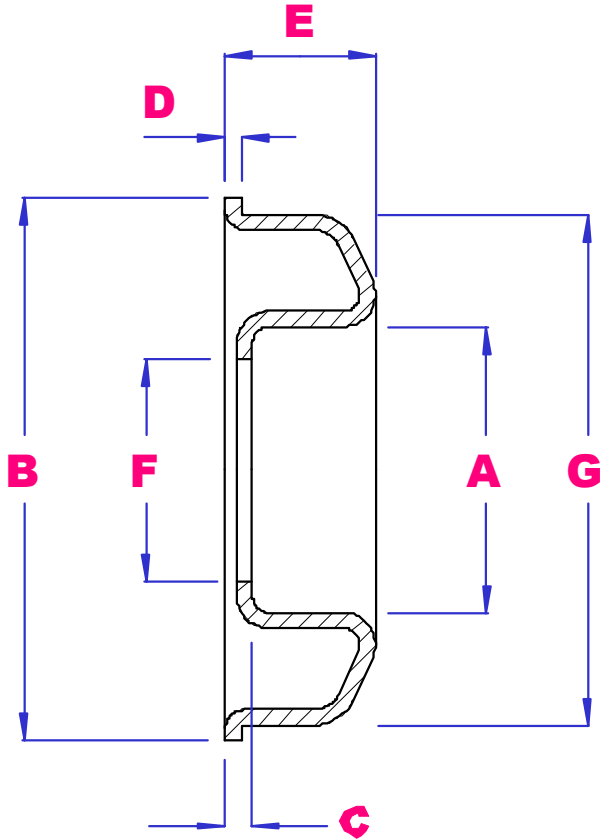




UBC

CONVEYOR ROLLER BEARING END CAPS



TYPE 1 PRESSED STEEL ZINC PLATED.
TYPE 1A INJECTION MOULDED NYLON.

TYPE 2 MACHINED CAST IRON.

PART NO	TYPE	A	B	C	D	E	F	G	H	I	J
RLR51	1A	35	50.1	3.2	2.1	15.3	22.5	46.5	-	-	-
SH72361P	1	47	76	4	2.1	23.5	36.5	72	-	-	-
SH83361P	1	47	88.1	4	2.1	23.5	36.5	83	-	-	-
CH205-4	2	52	101.6	-	5	35	41.5	95.7	15	27	65
CH205-4.5	2	52	114.3	-	5	35	41.5	108.4	15	27	65
CH205-5	2	52	127	-	5	35	41.5	121.1	15	27	65

AVAILABLE BEARING BORES A = 35

10, 12, 14, 15, 16, 17MM, 3/8", 1/2", 5/8".
8MM OVAL, 3/8, 7/16, 9/16 HEX,

AVAILABLE BEARING BORES A = 47

12, 14, 15, 17, 20, 25, 30, 35. 1/2", 5/8", 3/4", 7/8", 1"
8MM OVAL, 3/8, 7/16, 5/8, 11/16 HEX.

AVAILABLE BEARING BORES A = 52

20, 25, 28MM. 3/4", 7/8", 15/16", 1". 1" HEX