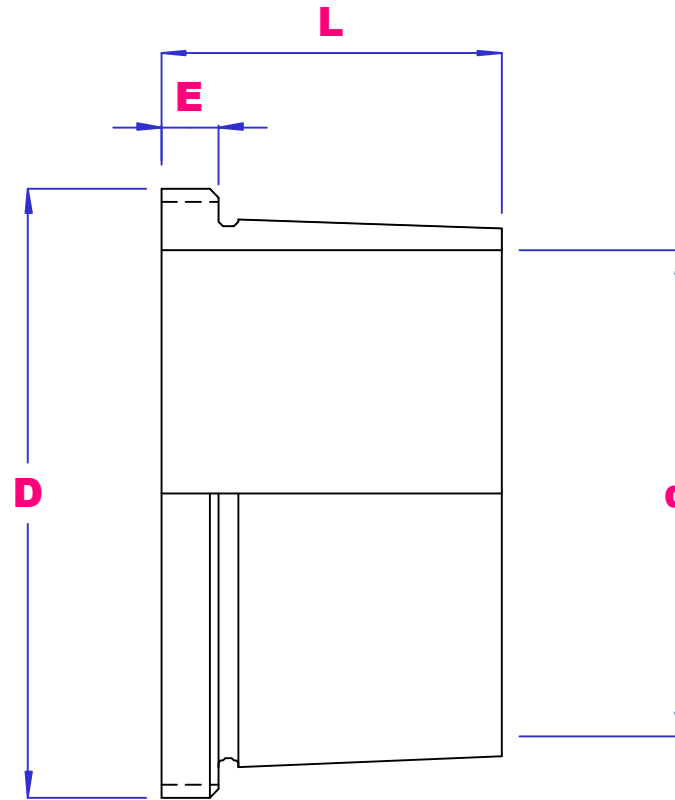


# UBC



## WITHDRAWAL SLEEVES



PART NO	d	D	LOCKNUT	E	L	Wgt kg	PART NO	d	D	LOCKNUT	E	L	Wgt kg
AH308	35	M45x1.5	KM09	6	29	0.09	AHX3026	125	M140X2	KM28	14	67	0.91
AHX2308		M45x1.5	KM09	7	40	0.13	AHX3126		M140X2	KM28	12	78	1.10
							AHX3226		M145X2	KM29	15	98	1.55
							AHX2326		M145X2	KM29	19	115	2.00
AH309	40	M50x1.5	KM10	6	31	0.12	AHX3028	135	M150X2	KM30	14	68	1.00
AHX2309		M50x1.5	KM10	7	44	0.16	AHX3128		M150X2	KM30	14	83	1.30
							AHX3228		M155X3	KM31	15	104	1.85
							AHX2328		M155X3	KM31	20	125	2.35
AHX310	45	M55x2	KM11	7	35	0.13	AHX3030	145	M160X3	KM32	15	72	1.15
AHX2310		M55x2	KM11	9	50	0.19	AHX3130		M165X3	KM33	15	96	1.80
							AHX3230		M165X3	KM33	17	114	2.20
							AHX2330		M165X3	KM33	24	135	2.80

<b>AHX311</b> <b>AHX2311</b>	50	M60x2 M60x2	KM12 KM12	7 9	37 54	0.17 0.26		<b>AH3032</b> <b>AH3132</b> <b>AHX3232</b> <b>AHX2332</b>	150	M170X3 M180X3 M180X3 M180X3	KM34 KM36 KM36 KM36	16 16 20 24	77 103 124 140	2.05 3.20 4.00 4.65
<b>AHX312</b> <b>AHX2312</b>	55	M65x2 M65x2	KM13 KM13	8 11	43 61	0.19 0.30		<b>AH3034</b> <b>AH3134</b> <b>AH3234</b>	160	M180X3 M190X3 M190X3	KM36 KM38 KM38	17 16 24	85 104 134	2.45 3.45 4.80
<b>AHX313</b> <b>AHX2313</b>	60	M75x2 M75x2	KM15 KM15	8 12	45 64	0.26 0.39		<b>AH3036</b> <b>AH3136</b> <b>AH3236</b>	170	M190X3 M200X3 M200X3	KM38 KM40 KM40	17 19 24	92 116 140	2.80 4.25 5.25
<b>AHX314</b> <b>AHX2314</b>	65	M80x2 M80x2	KM16 KM16	8 12	47 68	0.28 0.45		<b>AH3038</b> <b>AH3138</b> <b>AH3238</b>	180	TR205X4 TR210X4 TR210X4	HML41 HM42 HM42	18 20 26	96 125 145	3.40 4.90 5.90
<b>AHX315</b> <b>AHX2315</b>	70	M85x2 M85x2	KM17 KM17	8 12	49 72	0.31 0.53		<b>AH3040</b> <b>AH3140</b> <b>AH3240</b>	190	TR215X4 TR220X4 TR220X4	HML43 HM44 HM44	19 21 25	102 134 153	3.85 5.65 6.60
<b>AHX316</b> <b>AHX2316</b>	75	M90x2 M90x2	KM18 KM18	8 12	52 75	0.37 0.57		<b>AH3044</b> <b>AH3144</b>	200	TR235X4 TR240X4	HML47 HM48	20 23	111 145	7.40 9.3
<b>AHX317</b> <b>AHX2317</b>	80	M95x2 M95x2	KM19 KM19	9 13	56 78	0.43 0.65		<b>AH3048</b> <b>AH3148</b>	220	TR260X4 TR260X4	HML52 HM52	21 25	116 154	7.95 12.0
<b>AHX318</b> <b>AHX3218</b> <b>AHX2318</b>	85	M100x2 M100X2 M100x2	KM20 KM20 KM20	9 10 14	57 67 83	0.46 0.57 0.76		<b>AH3052</b> <b>AH3152</b>	240	TR280X4 TR290X4	HML56 HM58	23 26	128 172	9.6 16.0
<b>AHX319</b> <b>AHX2319</b>	90	M105x2 M105x2	KM21 KM21	10 16	67 89	0.54 0.90		<b>AH3056</b> <b>AH3156</b>	260	TR300X4 TR310X5	HML60 HM62	24 28	131 175	11.0 15.5
<b>AHX320</b> <b>AHX2320</b>	95	M110x2 M110x2	KM22 KM22	10 16	63 94	0.58 1.00		<b>AH3060</b> <b>AH3160</b>	280	TR320X5 TR330X5	HML64 HM66	26 30	145 192	13.0 19.0
<b>AHX3122</b> <b>AHX3222</b> <b>AHX2322</b>	105	M120X2 M125X2 M125X2	KM24 KM25 KM25	11 11 16	68 82 98	0.76 1.05 1.35		<b>AH3064</b> <b>AH3164</b>	300	TR345X5 TR350X5	HML68 HM70	27 31	149 209	14.5 22.5
<b>AHX3024</b> <b>AHX3124</b> <b>AHX3224</b> <b>AHX2324</b>	115	M130X2 M130X2 M135X2 M135X2	KM26 KM26 KM27 KM27	13 12 13 17	60 75 90 105	0.73 0.94 1.30 1.65		<b>AH3068</b> <b>AH3168</b>	320	TR365X5 TR370X5	HML73 HM74	28 33	162 225	17.5 26.5