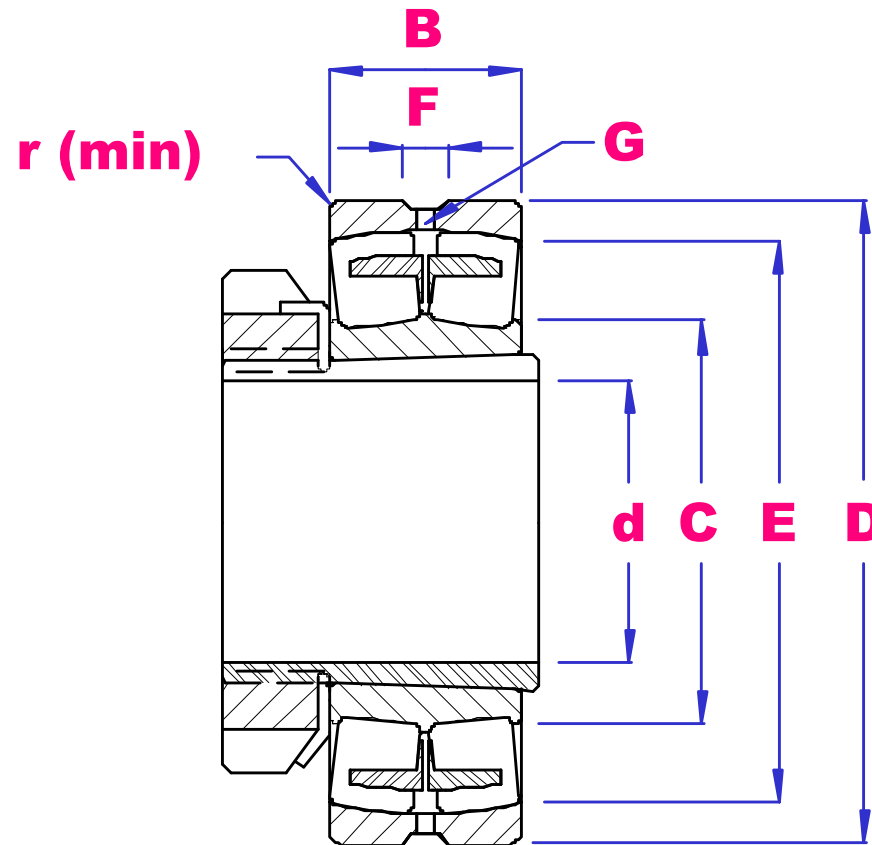


UBC



**SPHERICAL ROLLER
BEARINGS
TAPERED BORE**



PART NO	d	D	B	r min	E	F	G	SLEEVE	LOAD RATING		SPEED RATING (rpm)		WGT kg
									DkN	SkN	grease	oil	
23934K	150	230	45	2.0	220	9.5	4	H3934	320	660	1800	2200	5.5
23034K		260	67	2.1	231	11.1	5	H3034	555	1090	1600	2000	14.2
24034K30		260	90	2.1	227	8.3	4	-	705	1500	1000	1400	17.8
23134K		280	88	2.1	243	11.1	5	OH3134	730	1390	1200	1600	24.6
24134K30		280	109	2.1	237	8.3	4	-	915	1830	670	850	24.8
22234K		310	86	4.0	268	16.7	6	OH3134	845	1450	1300	1700	26.8
23234K		310	110	4.0	261	13.9	7	H2334	1070	1930	950	1300	38.0
22334K		360	120	4.0	299	16.7	7	H2334	1320	2120	950	1300	62.6
23936K	160	250	52	2.0	230	9.5	4	H3936	430	830	1700	2200	7.35
23036K		280	74	2.1	247	13.9	7.5	OH3036	630	1280	1400	1800	17.7
24036K30		280	100	2.1	242	8.3	4	-	835	1750	950	1300	26.6
23136K		300	96	3.0	259	11.1	6	OH3136	900	1720	1100	1500	27.1

24136K30		300	118	3.0	252	11.1	6	-	1020	2030	630	800	33.0
22236K		320	86	4.0	278	16.7	6	OH3136	895	1550	1300	1700	29.4
23236K		320	112	4.0	271	13.9	7	H2336	1160	2130	900	1200	38.7
22336K		380	126	4.0	316	22.3	8	H2336	1470	2400	900	1200	72.2
23938K	170	260	52	2.0	250	9.4	4	H3938	432	825	1600	2000	8.55
23038K		290	75	2.1	259	13.9	5	OH3038	700	1450	1300	1700	17.2
24038K30		290	100	2.1	252	13.9	7	-	855	1840	950	1300	22.9
23138K		320	104	3.0	276	11.1	6	OH3138	975	1840	1000	1400	34.3
24138K30		320	128	3.0	267	11.1	6	-	1200	2400	600	750	41.9
22238K		340	92	4.0	293	16.7	6	OH3138	865	1620	1200	1600	37.4
23238K		340	120	4.0	288	16.7	7	H2338	1290	2400	850	1100	44.8
22338K		400	132	5.0	334	22.3	8	H2338	1640	2630	850	1100	82.2
23940K	180	280	60	2.1	254	9.5	4	H3940	495	1150	1600	2000	12.1
23040K		310	82	2.1	276	13.9	7.5	OH3040	770	1560	1200	1600	22.6
24040K30		310	109	2.1	268	11.1	5	-	985	2130	900	1200	31.3
23140K		340	112	3.0	292	16.7	7	OH3140	1170	2240	950	1300	43.8
24140K30		340	140	3.0	283	11.1	6	-	1380	2800	560	700	52.1
22240K		360	98	4.0	309	16.7	6	OH3140	1100	1950	1100	1500	44.7
23240K		360	128	4.0	304	16.7	8	H2340	1360	2530	850	1100	53.4
22340K		420	138	5.0	350	22.3	8	H2340	1740	2860	850	1100	97.0
23340K	420	165	5.0	340	22.3	8	-	2020	3500	750	950	122	
23944K	200	300	60	2.1	288	9.5	4	H3944	515	1190	1500	1900	12.8
23044K		340	90	3.0	303	13.9	6	OH3044	935	1900	1100	1500	32.0
24044K30		340	118	3.0	295	11.1	5	-	1150	2500	850	1100	39.1
23144K		370	120	4.0	320	16.7	7	OH3144	1370	2710	900	1200	54.7
24144K30		370	150	4.0	318	11.1	5	-	1570	2750	500	600	66.3
22244K		400	108	4.0	344	16.7	8	OH3144	1350	2400	950	1300	63.5
23244K		400	144	4.0	334	16.7	8	H2344	1720	3200	750	950	77.3
22344K		460	145	5.0	365	22.3	8	H2344	2160	3950	750	950	129
23948K	220	320	60	2.1	295	9.5	4	H3948	530	1310	1300	1700	15.0
23048K		360	92	3.0	322	13.9	6	OH3048	985	2080	1000	1400	34.2
24048K30		360	118	3.0	318	11.1	5	-	1240	2800	800	1000	46.5
23148K		400	128	4.0	345	16.7	6	OH3148	1500	3000	850	1100	68.2
24148K30		400	160	4.0	336	11.1	6	-	1660	3400	480	600	79.1
22248K		440	120	4.0	379	18.0	7	OH3148	1640	1820	900	1200	85.0
23248K		440	160	4.0	369	22.3	8	H2348	2080	3950	670	850	102
22348K		500	155	5.0	425	22.3	8	H2348	2550	4750	670	850	156