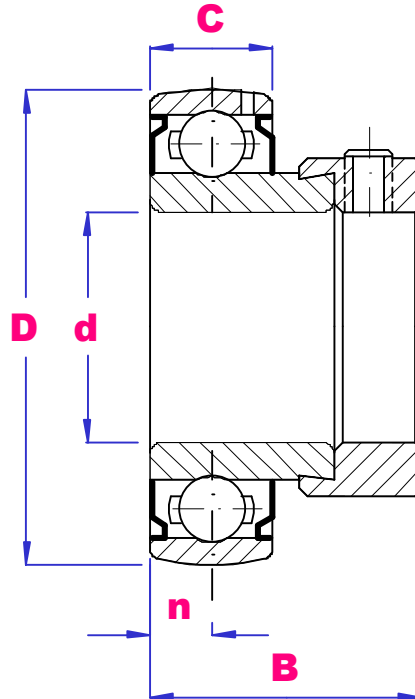




UBC

SA200 SERIES INCH BORE BEARING INSERT



PART NO	d	D mm	B mm	C mm	n mm	Load D-Kn	Load S-Kn	Max Rpm	Wgt kg
SA203-8	1/2	40	28.6	12	6.0	7.36	4.79	8000	0.14
SA203-10	5/8	40	28.6	12	6.0	7.36	4.79	8000	0.135
SA203-11	11/16	40	28.6	12	6.0	7.36	4.79	8000	0.13
SA204-12	3/4	47	29.5	14	7.0	12.81	6.65	6800	0.15
SA205-14	7/8	52	30.5	15	7.5	14.11	9.95	5700	0.26
SA205-15	15/16								0.24
SA205-16	1								0.22
SA206-18	1.1/8	62	33.9	16	8.0	19.49	11.31	4900	0.32
SA206-19	1.3/16								0.30
SA206-20	1.1/4								0.27
SA207-20	1.1/4	72	37.5	18	9.0	25.68	15.31	4100	0.55
SA207-22	1.3/8								0.50
SA207-23	1.7/16								0.47
SA208-24	1.1/2	80	40.5	19	9.5	29.12	19.84	3600	0.67
SA209-27	1.11/16	85	43.7	19	9.5	31.5	20.4	3200	0.72
SA209-28	1.3/4								0.71
SA210-30	1.7/8	90	43.7	20	10	34.9	23.2	2800	0.79
SA210-31	1.15/16								0.75
SA211-32	2	100	48.4	21	10.5	43.5	29.3	2600	0.94
SA211-35	2.3/16								0.91
SA212-36	2.1/4	110	53.1	22	11	52.5	35.8	2500	1.18