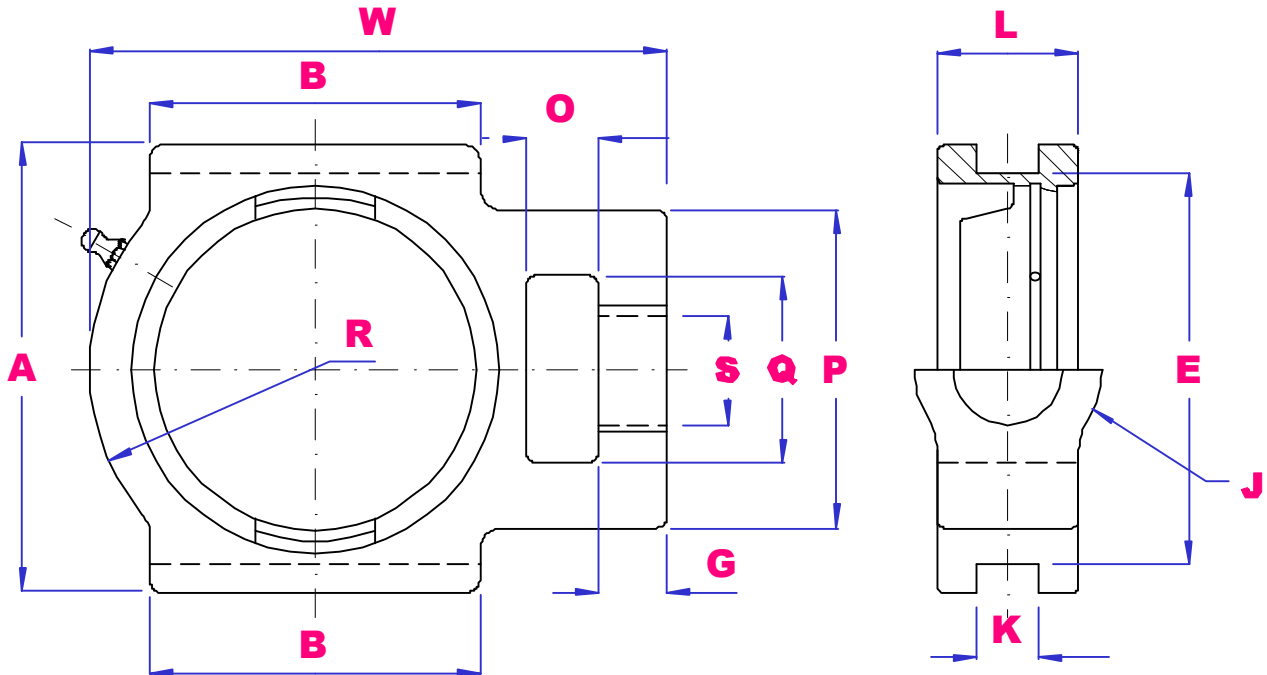




UBC

T200 SERIES HOUSING



PART NO	O mm	G mm	P mm	Q mm	S mm	B mm	K mm	E mm	A mm	W mm	J mm	L mm	R mm	Wgt kg
T204	16	12	51	32	19	51	12	76	89	94	32	21	33	0.62
T205	16	12	51	32	19	51	12	76	89	97	32	24	35	0.69
T206	16	12	56	37	22	57	12	89	102	113	37	28	43	0.99
T207	16	15	64	37	22	64	12	89	102	129	37	30	51	1.24
T208	19	18	83	49	29	83	16	102	114	144	49	33	56	1.87
T209	19	18	83	49	29	83	16	102	117	145	49	35	57	1.82
T210	19	18	83	49	29	86	16	102	117	151	49	37	59	1.82
T211	25	21	102	64	35	95	22	130	146	171	64	38	65	2.93
T212	32	21	102	64	35	102	22	130	146	194	64	42	75	3.39
T213	32	23	111	70	41	121	26	151	167	224	70	44	87	5.14
T214	32	23	111	70	41	121	26	151	167	224	70	46	87	5.05
T215	32	23	111	70	41	121	26	151	167	232	70	48	92	5.29
T216	32	23	111	70	41	121	26	165	184	235	70	51	95	5.41
T217	38	31	124	73	48	157	27	173	198	260	73	54	98	7.62
T218	41	31	130	80	48	140	27	190	213	276	80	55	106	8.22

SUITABLE BEARING SERIES UC200, NA200, UK200, SB200, SA200, CS200

HOUSINGS T204 – T210 ARE AVAILABLE IN **304C** STAINLESS STEEL

AVAILABLE MACHINED FOR OPEN AND CLOSED COVERS, SUFFIX **M**.