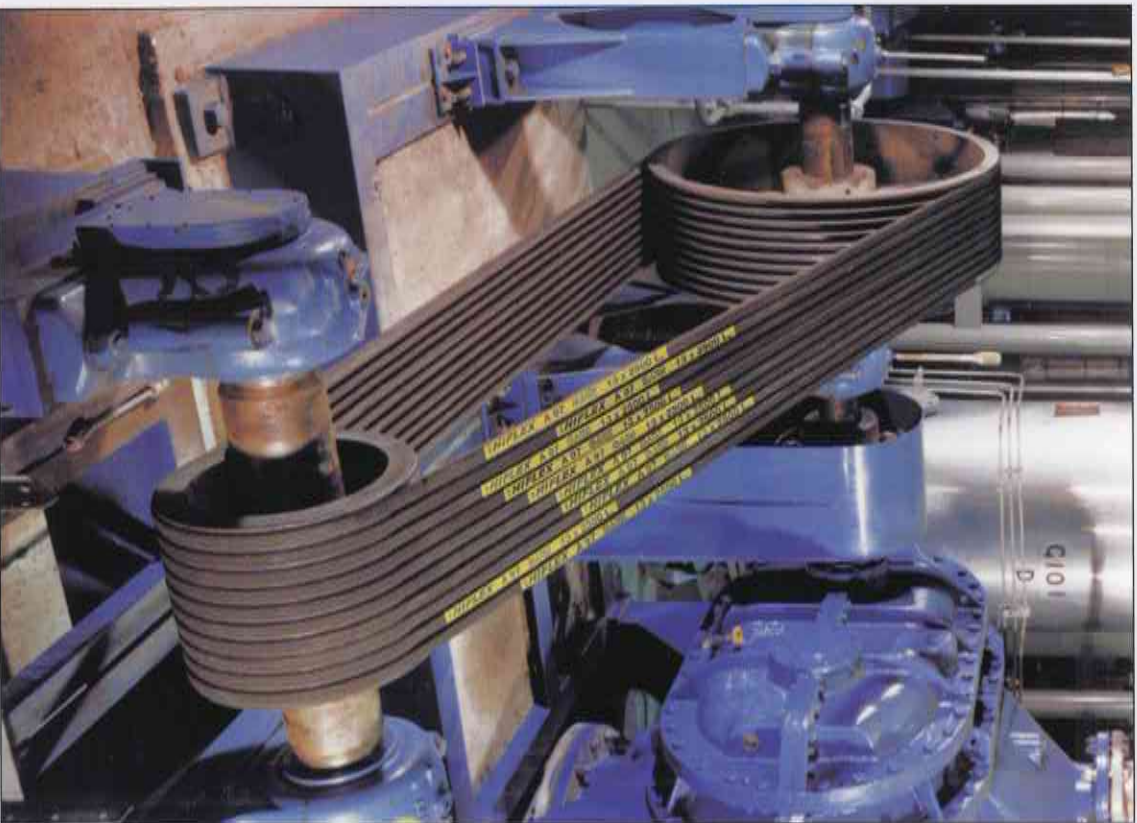


V-belts



HI-FLEX

V-belts for Industry



From one of the world's major experts in the rubber sector, a new range of V-belts at the highest performance and reliability levels for power transmission are now available.

HIFLEX V-belts are manufactured with premium rubber compounds and have high tensile strength, low stretch polyester reinforcing cords. They are available in the classical type (sections Z (M), A, B, C, D, E) and Narrow/Wedge type (sections SPZ, SPA, SPB, SPC), as well as in the Raw Edge Cogged type.

The wrapped type is the most common in industrial applications and is made up of a trapezoidal core of rubber, polyester tensile cords and is externally protected by an impregnated fabric cover which assures optimal abrasion resistance against the pulley and environment.

The Raw Edge Cogged type features a fabric cover on the upper side only, and a cogged inside section in order to allow the use on small diameter pulleys and has improved efficiency over the wrapped type V-belt.

Compliant to AS2784-2002, ISO 4184, DIN 2215/7753 and BS3790 standards, and compatible with RMA specifications, HIFLEX V-Belts have an operative temperature range of -30 to +80 degrees C. They are oil and heat resistant and assure smooth operation, high power transmission, shock absorption and long duration. HIFLEX V-belts are always manufactured, designed and marked with reference to the pitch length (Lp).

In every mechanical sector you can find an application for the HIFLEX V-belt. Dunlop Hiflex is present worldwide and is your reliable and cost effective partner from the pre-sales technical support through to the post-sales service, for every need in the OEM or MRO field.

Banded, Poly-V, Double (Hex) and variable speed belts are also part of the HIFLEX range. Lengths and versions not included in the ranges mentioned are available upon request.

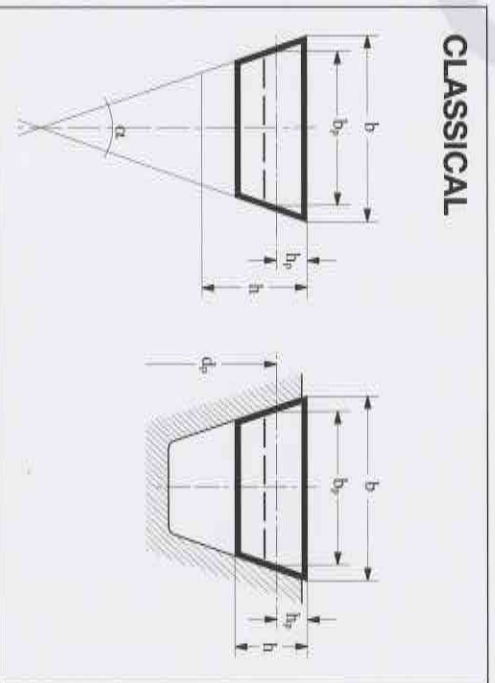


 HIFLEX

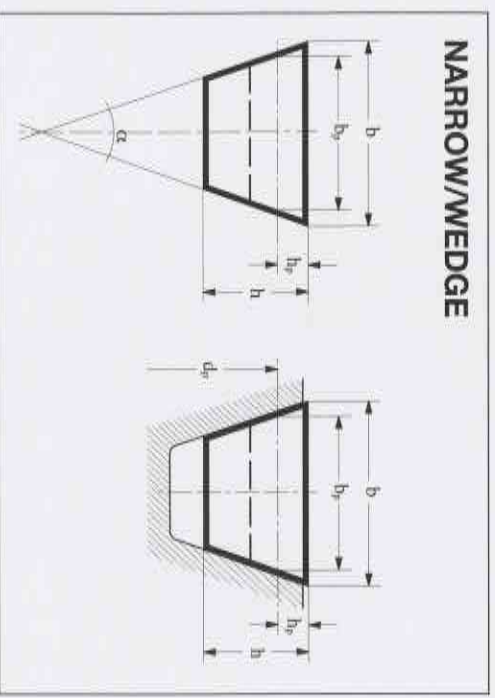
The contents of this publication do not represent a guarantee of any kind and are subject to modifications without prior notice.

BELT TYPE	SECTION	WIDTH x HEIGHT (mm)	PITCH LENGTH RANGE (mm)	INSIDE LENGTH RANGE (inch)	
Classical	Wrapped	Z (M)	10x6	380-1545	14-60
		A	13x8	490-4040	18-158
		B	17x11	550-6510	20-255
		C	22x14	1075-7550	40-295
		D	32x19	2875-9170	110-358
	E	40x25	5035-10090	195-394	
	Raw Edge Cogged	ZX	10x6	380-1545	14-60
		AX	13x8	465-2570	17-100
		BX	17x11	630-2580	23-100
		CX	22x14	1050-2470	39-95
SPZ (3V)		10x8	487-3550	-	
Narrow (Wedge)	Raw Edge Cogged	SPA	13x10	750-4500	-
		SPB (5V)	17x14	1250-8000	-
		SPC	22x18	2000-12500	-
	Wrapped	8V (25N)	25x23	1800-4500	-
		XPZ (3VX)	10x8	512-2540	-
		XPA	13x10	800-2650	-
		XPB (5VX)	17x14	1250-3000	-
XPC	22x18	612-2500	-		

CLASSICAL



NARROW/WEDGE



BELT SECTION	Z	A	B	C	D	ZX	AX	BX	CX	SPZ	SPA	SPB	SPC	XPZ (SPZ)	XPA (SPA)	XPB (SPB)	XPC (SPC)
Top width b (mm)	10	13	17	22	32	10	13	17	22	10	13	17	22	10	13	17	22
Pitch width b _p (mm)	8,5	11	14	19	27	8,5	11	14	19	8,5	11	14	19	8,5	11	14	19
Height h (mm)	6	8	11	14	19	6	8	11	14	8	10	14	18	8	10	14	18
Side angle α	40°	40°	40°	40°	40°	40°	40°	40°	40°	40°	40°	40°	40°	40°	40°	40°	40°
Max belt speed (m/s)	30	30	30	30	30	40	40	40	40	40	40	40	40	50	50	50	50
Weight (kg/m)	0,060	0,110	0,185	0,300	0,600	0,055	0,100	0,170	0,280	0,065	0,115	0,200	0,350	0,060	0,110	0,185	0,330
Lp-Li (average, mm)	22	30	42	57	75	22	30	42	57	-	-	-	-	-	-	-	-
La-lp (average, mm)	16	20	26	36	51	16	20	26	36	13	18	22	30	13	18	22	30
Min. pulley pitch diam. d _{min} (mm)	50	71	112	180	355	40	63	90	140	63	90	140	224	56	71	112	180

Note: Lp=pitch length; Li=inside length; La=outside length