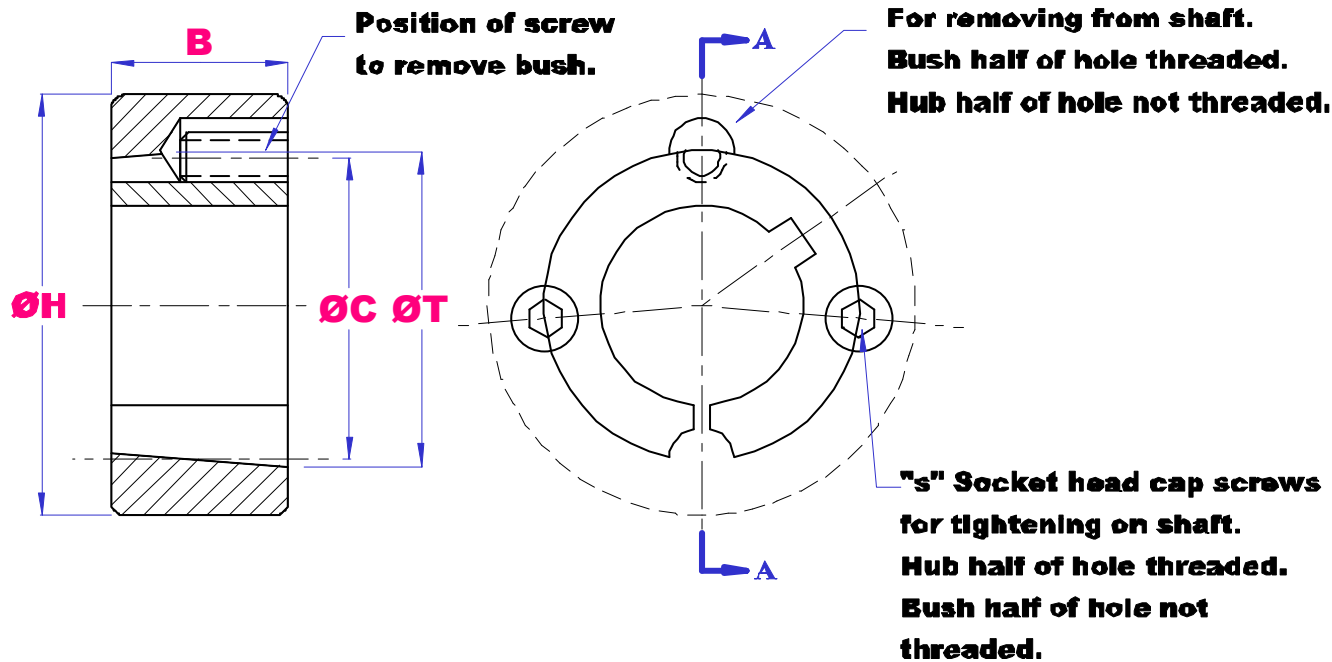




# TAPERLOCK BUSH DIMENSIONS

## 1008 – 3030



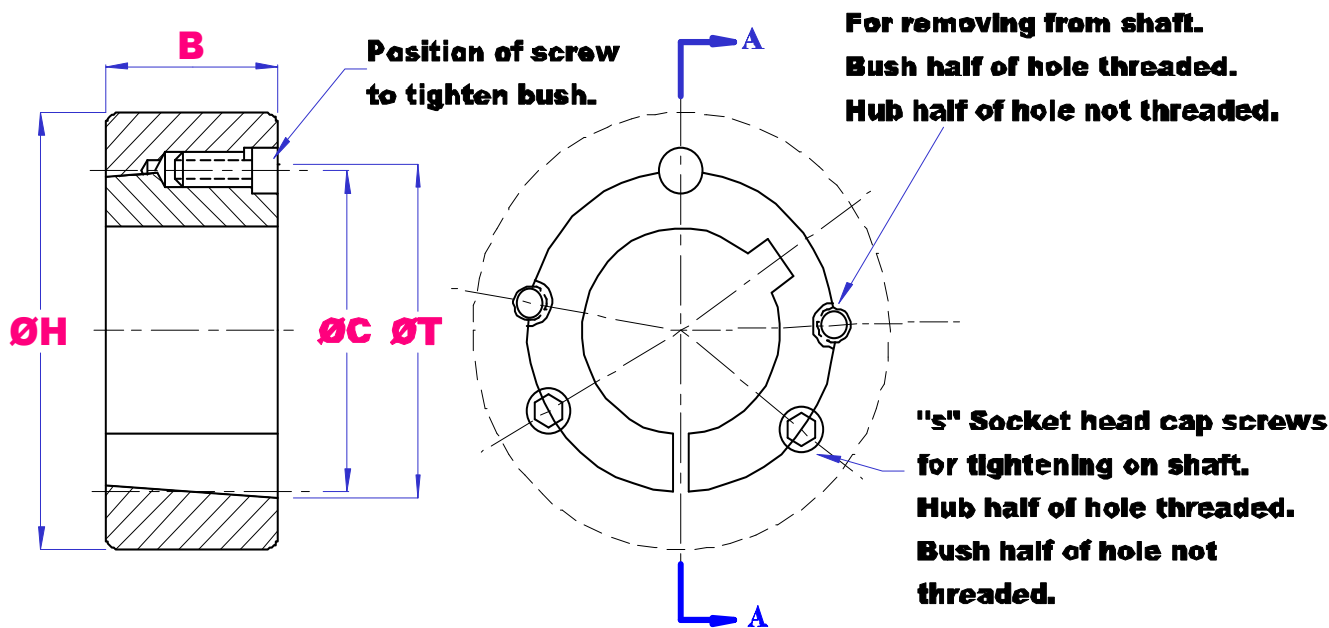
BUSH SIZE	T mm	B mm	H mm <small>(minimum hub diameter)</small>	C mm	SET SCREW (BSW)
1008	35.2	22.2	60.3	33.7	1/4 X 1/2
1108	38.4	22.2	63.5	36.9	1/4 X 1/2
1210	47.6	25.4	92.1	44.5	3/8 X 5/8
1215	47.6	38.1	79.4	44.5	3/8 X 5/8
1310	50.8	25.4	95.3	47.6	3/8 X 5/8
1610	57.2	25.4	101.6	54.0	3/8 X 5/8
1615	57.2	38.1	88.9	54.0	3/8 X 5/8
2012	69.9	31.8	120.7	66.7	7/16 X 7/8
2517	85.7	44.5	139.7	82.6	1/2 X 1
2525	85.7	63.5	120.7	82.6	3/8 X 1
3020	108.0	50.8	177.8	101.6	5/8 X 1.1/4
3030	108.0	76.2	158.8	101.6	7/8 X 1.1/4



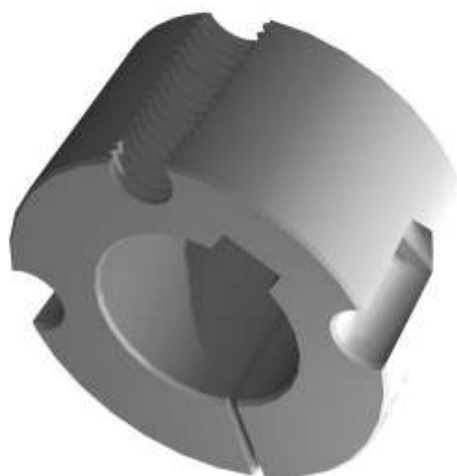


# TAPERLOCK BUSH DIMENSIONS

## 3525 - 5050



BUSH SIZE	T mm	B mm	H mm <small>(minimum hub diameter)</small>	C mm	SET SCREW (BSW)
3525	127.0	63.5	197.0	123.0	1/2 X 1.1/2
3535	127.0	89.0	197.0	123.0	1/2 X 1.1/2
4030	146.0	76.2	241.0	141.0	5/8 X 1.3/8
4040	146.0	102.0	241.0	141.0	5/8 X 1.3/8
4535	161.0	89.0	267.0	156.0	3/4 X 2
4545	161.0	114.0	267.0	156.0	3/4 X 2
5040	178.0	101.6	292.0	171.0	7/8 X 2.1/4
5050	178.0	127.0	292.0	171.0	7/8 X 2.1/4





# TAPER BUSH INSTALLATION INSTRUCTIONS

## TO ASSEMBLE:

1. Clean and degrease the bore and surfaces of the bush and tapered bore of the hub. Insert the bush into the hub and line up the holes (half thread holes must line up with half unloading holes).
2. Lightly oil the grub screws and screw in but do not tighten yet.
3. Clean and degrease the shaft. Fit the hub with taper bush on the shaft and place in desired position.
4. When using a key, it should be first fitted in the shaft keyway. There should be a top clearance between the key and keyway bore.
5. Gradually tighten the screws in accordance with the torques in the table.
6. When the drive has been operating under load for a short period of time, check and ensure that the screws remained at the appropriate tightening torque.

## TO REMOVE:

1. Loosen and remove all screws and place them in the holes of the bushing.
2. Tighten the screws alternatively till the hub's grip on the bush is loosened. The inner bore of the bushing can be slid on the shaft.
3. Remove the bush from the shaft.

<b>TAPERLOCK BUSH</b>	<b>SCREW TIGHTENING TORQUES (Nm)</b>	<b>SCREW QUANTITY</b>	<b>SCREW SIZE</b>
<b>1008 1108</b>	5.6	2	1/4 BSW
<b>1210 1215</b>	20	2	3/8 BSW
<b>1310 1315</b>	20	2	3/8 BSW
<b>1610 1615</b>	20	2	3/8 BSW
<b>2012</b>	31	2	7/16 BSW
<b>2517</b>	48	2	1/2 BSW
<b>3020 3030</b>	90	2	5/8 BSW
<b>3535</b>	112	3	1/2 BSW
<b>4030 4040</b>	170	3	5/8 BSW
<b>4545</b>	192	3	3/4 BSW
<b>5050</b>	271	3	7/8 BSW



# TAPER BUSH STANDARD SHAFT SIZES

BUSH	STANDARD BORE SIZES	
<b>1008</b>	MM INCH	11, 12, 14, 15, 16, 18, 19, 20, 22, 24, 25 3/8, 1/2, 5/8, 3/4, 7/8, 1
<b>1108</b>	MM INCH	11, 12, 14, 15, 16, 18, 19, 20, 22, 24, 25, 28 3/8, 1/2, 9/16, 5/8, 3/4, 7/8, 15/16, 1, 1.1/16, 1.1/8
<b>1210</b>	MM INCH	12, 14, 15, 16, 18, 19, 20, 22, 24, 25, 26, 28, 30, 32 1/2, 9/16, 5/8, 11/16, 3/4, 13/16, 7/8, 1, 1.1/16, 1.1/8, 1.3/16, 1.1/4
<b>1215</b>	MM INCH	12, 14, 15, 16, 18, 19, 20, 22, 24, 25, 26, 28, 30, 32 1/2, 9/16, 5/8, 11/16, 3/4, 13/16, 7/8, 1, 1.1/16, 1.1/8, 1.3/16, 1.1/4
<b>1310</b>	MM INCH	14, 15, 16, 18, 19, 20, 22, 24, 25, 28, 30, 32 1/2, 5/8, 3/4, 7/8, 1, 1.1/8, 1.1/4
<b>1610</b>	MM INCH	12, 14, 15, 16, 18, 19, 20, 22, 24, 25, 28, 30, 32, 35, 38, 40, 42 1/2, 9/16, 5/8, 3/4, 13/16, 7/8, 1, 1.1/16, 1.1/8, 1.1/4, 1.5/16, 1.3/8, 1.1/2, 1.5/8
<b>1615</b>	MM INCH INCH	12, 14, 15, 16, 18, 19, 20, 22, 24, 25, 28, 30, 32, 35, 38, 40, 42 1/2, 9/16, 5/8, 11/16, 3/4, 13/16, 7/8, 15/16, 1, 1.1/16, 1.1/8, 1.3/16, 1.1/4, 1.5/16, 1.3/8, 1.1/2, 1.5/8
<b>2012</b>	MM INCH	16, 18, 19, 20, 22, 24, 25, 28, 30, 32, 35, 38, 40, 42, 45, 48, 50 3/4, 7/8, 1, 1.1/8, 1.1/4, 1.3/8, 1.1/2, 1.5/8, 1.3/4, 1.7/8, 2
<b>2017</b>	MM INCH	16, 18, 19, 20, 22, 24, 25, 28, 30, 32, 35, 38, 40, 42, 45, 48, 50 3/4, 13/16, 7/8, 15/16, 1, 1.1/16, 1.1/8, 1.1/4, 1.5/16, 1.3/8, 1.1/2, 1.5/8, 1.3/4, 1.7/8, 2
<b>2517</b>	MM INCH	18, 19, 20, 22, 24, 25, 28, 30, 32, 35, 38, 40, 42, 45, 48, 50, 55, 60 3/4, 7/8, 1, 1.1/8, 1.1/4, 1.3/8, 1.1/2, 1.5/8, 1.3/4, 1.7/8, 2, 2.1/8, 2.1/4, 2.3/8, 2.1/2
<b>3020</b>	MM INCH INCH	25, 28, 30, 32, 35, 38, 40, 42, 45, 48, 50, 55, 60, 65, 70, 75 1, 1.1/8, 1.1/4, 1.3/8, 1.1/2, 1.3/4, 1.5/8, 1.7/8, 2, 2.1/8, 2.1/4, 2.3/8, 2.1/2, 2.5/8, 2.3/4, 2.7/8, 3
<b>3030</b>	MM INCH INCH	25, 28, 30, 32, 35, 38, 40, 42, 45, 48, 50, 55, 60, 65, 70, 75 1, 1.1/8, 1.1/4, 1.3/8, 1.1/2, 1.5/8, 1.3/4, 1.7/8, 2, 2.1/8, 2.1/4, 2.3/8, 2.1/2, 2.5/8, 2.3/4, 2.7/8, 3
<b>3535</b>	MM INCH INCH	35, 38, 40, 42, 45, 48, 50, 55, 60, 65, 70, 75, 80, 85, 90 1.3/8, 1.1/2, 1.5/8, 1.3/4, 1.7/8, 2, 2.1/8, 2.1/4, 2.3/8, 2.1/2, 2.5/8, 2.3/4, 2.7/8, 3, 3.1/8, 3.1/4, 3.3/8, 3.1/2,
<b>4030</b>	MM INCH	40, 42, 45, 48, 50, 55, 60, 65, 70, 75, 80, 85, 90, 95, 100 1.3/8, 1.1/2, 1.3/4, 1.7/8, 2, 2.1/8, 2.1/4, 2.1/2, 2.5/8, 2.3/4, 2.7/8, 3, 3.1/4, 3.1/2, 3.3/4, 4
<b>4040</b>	MM INCH	40, 42, 45, 48, 50, 55, 60, 65, 70, 75, 80, 85, 90, 95, 100 1.3/8, 1.1/2, 1.3/4, 1.7/8, 2, 2.1/8, 2.1/4, 2.1/2, 2.5/8, 2.3/4, 2.7/8, 3, 3.1/4, 3.1/2, 3.3/4, 4
<b>4545</b>	MM INCH	60, 65, 70, 75, 80, 85, 90, 95, 100, 105, 110 2.1/4, 2.3/8, 2.1/2, 2.3/4, 2.7/8, 3, 3.1/8, 3.1/4, 3.3/8, 3.1/2, 3.3/4, 4, 4.1/4, 4.1/2
<b>5050</b>	MM INCH	70, 75, 80, 85, 90, 95, 100, 110, 115, 120, 125 2.3/4, 2.7/8, 3, 3.1/4, 3.1/2, 3.3/4, 4, 4.1/4, 4.1/2, 4.3/4, 5

## PART NUMBER EXAMPLE

**TL2517-50MM**

