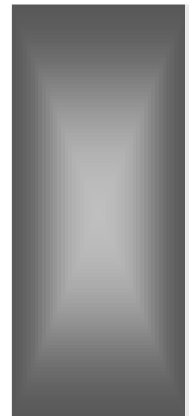
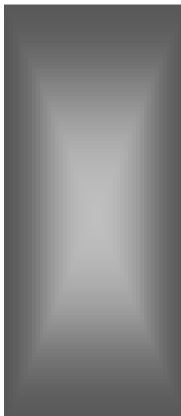
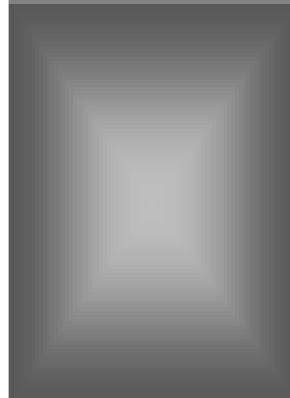
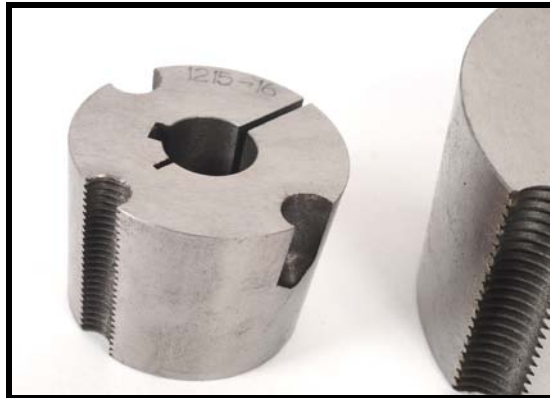
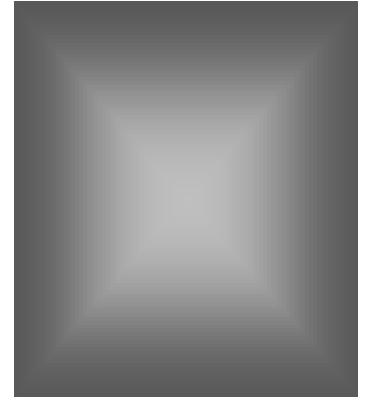
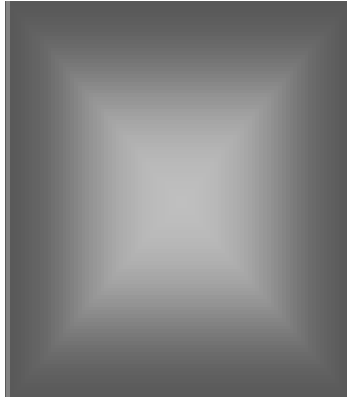


Z-LOCK

SHAFT FIXINGS



**TAPERLOCK BUSHES - SHAFT COLLARS
WELD ON HUBS – KEY STEEL**

ALSO AVAILABLE FROM

Z-LOCK



LOCKING ASSEMBLIES

(PLEASE ASK FOR CATALOGUE)

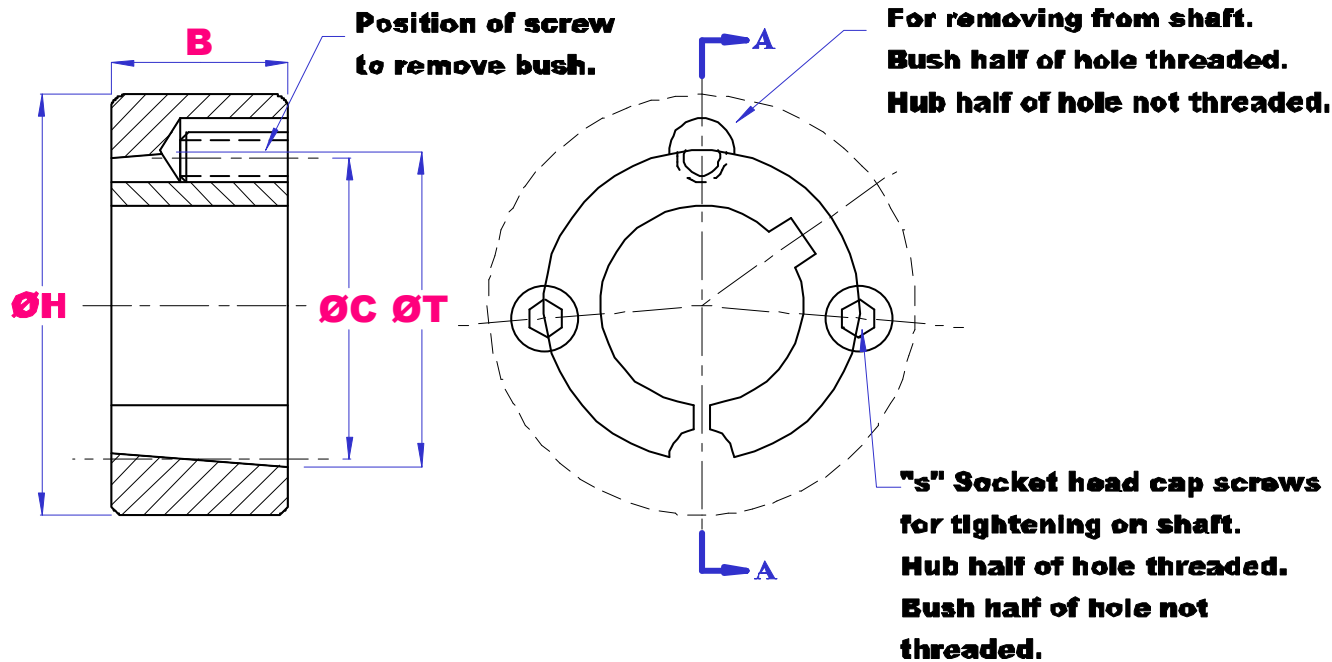
SHAFT FIXINGS INDEX

TOPIC	PAGE
TAPERLOCK BUSHES	
TAPERLOCK DIMENSIONS (1008-3030)	1
TAPERLOCK DIMENSIONS (3525-5050)	2
TAPERLOCK INSTALLATION INSTRUCTIONS	3
TAPERLOCK STANDARD BORE SIZES	4
TAPERLOCK PART NUMBERING	4
WELD ON HUBS	
'W' SERIES	5
'WH' SERIES	6
WELD ON HUB PART NUMBERING	6
SHAFT COLLARS	
METRIC (ZINC AND STAINLESS STEEL)	7
IMPERIAL (ZINC AND STAINLESS STEEL)	8
KEY STEEL	
300mm LENGTHS	9
CUT AND ROUNDED LENGTHS (PACKS OF 10)	10



TAPERLOCK BUSH DIMENSIONS

1008 – 3030



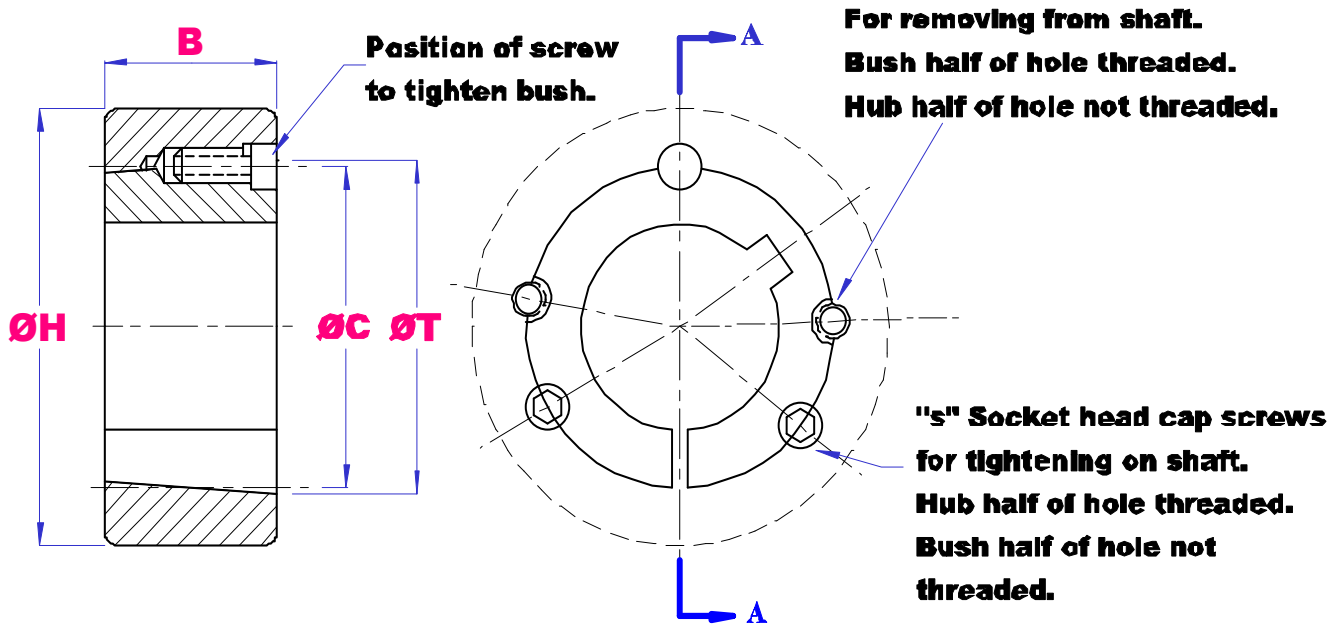
BUSH SIZE	T mm	B mm	H mm <small>(minimum hub diameter)</small>	C mm	SET SCREW (BSW)
1008	35.2	22.2	60.3	33.7	1/4 X 1/2
1108	38.4	22.2	63.5	36.9	1/4 X 1/2
1210	47.6	25.4	92.1	44.5	3/8 X 5/8
1215	47.6	38.1	79.4	44.5	3/8 X 5/8
1310	50.8	25.4	95.3	47.6	3/8 X 5/8
1610	57.2	25.4	101.6	54.0	3/8 X 5/8
1615	57.2	38.1	88.9	54.0	3/8 X 5/8
2012	69.9	31.8	120.7	66.7	7/16 X 7/8
2517	85.7	44.5	139.7	82.6	1/2 X 1
2525	85.7	63.5	120.7	82.6	3/8 X 1
3020	108.0	50.8	177.8	101.6	5/8 X 1.1/4
3030	108.0	76.2	158.8	101.6	7/8 X 1.1/4



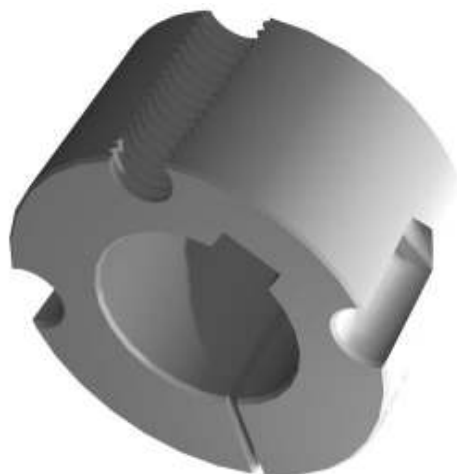


TAPERLOCK BUSH DIMENSIONS

3525 - 5050



BUSH SIZE	T mm	B mm	H mm <small>(minimum hub diameter)</small>	C mm	SET SCREW (BSW)
3525	127.0	63.5	197.0	123.0	1/2 X 1.1/2
3535	127.0	89.0	197.0	123.0	1/2 X 1.1/2
4030	146.0	76.2	241.0	141.0	5/8 X 1.3/8
4040	146.0	102.0	241.0	141.0	5/8 X 1.3/8
4535	161.0	89.0	267.0	156.0	3/4 X 2
4545	161.0	114.0	267.0	156.0	3/4 X 2
5040	178.0	101.6	292.0	171.0	7/8 X 2.1/4
5050	178.0	127.0	292.0	171.0	7/8 X 2.1/4





TAPER BUSH INSTALLATION INSTRUCTIONS

TO ASSEMBLE:

1. Clean and degrease the bore and surfaces of the bush and tapered bore of the hub. Insert the bush into the hub and line up the holes (half thread holes must line up with half unloading holes).
2. Lightly oil the grub screws and screw in but do not tighten yet.
3. Clean and degrease the shaft. Fit the hub with taper bush on the shaft and place in desired position.
4. When using a key, it should be first fitted in the shaft keyway. There should be a top clearance between the key and keyway bore.
5. Gradually tighten the screws in accordance with the torques in the table.
6. When the drive has been operating under load for a short period of time, check and ensure that the screws remained at the appropriate tightening torque.

TO REMOVE:

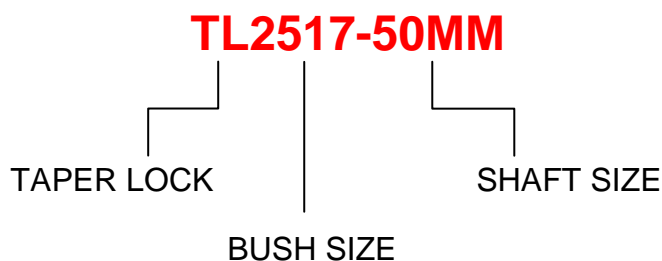
1. Loosen and remove all screws and place them in the holes of the bushing.
2. Tighten the screws alternatively till the hub's grip on the bush is loosened. The inner bore of the bushing can be slid on the shaft.
3. Remove the bush from the shaft.

TAPERLOCK BUSH	SCREW TIGHTENING TORQUES (Nm)	SCREW QUANTITY	SCREW SIZE
1008 1108	5.6	2	1/4 BSW
1210 1215	20	2	3/8 BSW
1310 1315	20	2	3/8 BSW
1610 1615	20	2	3/8 BSW
2012	31	2	7/16 BSW
2517	48	2	1/2 BSW
3020 3030	90	2	5/8 BSW
3535	112	3	1/2 BSW
4030 4040	170	3	5/8 BSW
4545	192	3	3/4 BSW
5050	271	3	7/8 BSW

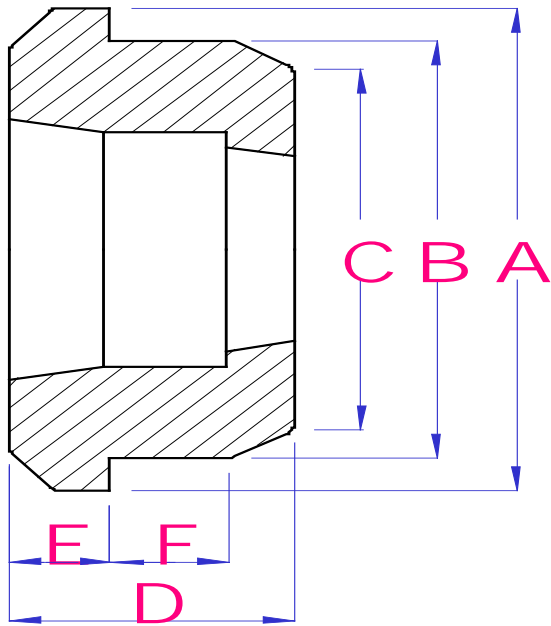
-LOCK **TAPER BUSH STANDARD** **SHAFT SIZES**

BUSH	STANDARD BORE SIZES	
1008	MM INCH	11, 12, 14, 15, 16, 18, 19, 20, 22, 24, 25 3/8, 1/2, 5/8, 3/4, 7/8, 1
1108	MM INCH	11, 12, 14, 15, 16, 18, 19, 20, 22, 24, 25, 28 3/8, 1/2, 9/16, 5/8, 3/4, 7/8, 15/16, 1, 1.1/16, 1.1/8
1210	MM INCH	12, 14, 15, 16, 18, 19, 20, 22, 24, 25, 26, 28, 30, 32 1/2, 9/16, 5/8, 11/16, 3/4, 13/16, 7/8, 1, 1.1/16, 1.1/8, 1.3/16, 1.1/4
1215	MM INCH	12, 14, 15, 16, 18, 19, 20, 22, 24, 25, 26, 28, 30, 32 1/2, 9/16, 5/8, 11/16, 3/4, 13/16, 7/8, 1, 1.1/16, 1.1/8, 1.3/16, 1.1/4
1310	MM INCH	14, 15, 16, 18, 19, 20, 22, 24, 25, 28, 30, 32 1/2, 5/8, 3/4, 7/8, 1, 1.1/8, 1.1/4
1610	MM INCH	12, 14, 15, 16, 18, 19, 20, 22, 24, 25, 28, 30, 32, 35, 38, 40, 42 1/2, 9/16, 5/8, 3/4, 13/16, 7/8, 1, 1.1/16, 1.1/8, 1.1/4, 1.5/16, 1.3/8, 1.1/2, 1.5/8
1615	MM INCH INCH	12, 14, 15, 16, 18, 19, 20, 22, 24, 25, 28, 30, 32, 35, 38, 40, 42 1/2, 9/16, 5/8, 11/16, 3/4, 13/16, 7/8, 15/16, 1, 1.1/16, 1.1/8, 1.3/16, 1.1/4, 1.5/16, 1.3/8, 1.1/2, 1.5/8
2012	MM INCH	16, 18, 19, 20, 22, 24, 25, 28, 30, 32, 35, 38, 40, 42, 45, 48, 50 3/4, 7/8, 1, 1.1/8, 1.1/4, 1.3/8, 1.1/2, 1.5/8, 1.3/4, 1.7/8, 2
2017	MM INCH	16, 18, 19, 20, 22, 24, 25, 28, 30, 32, 35, 38, 40, 42, 45, 48, 50 3/4, 13/16, 7/8, 15/16, 1, 1.1/16, 1.1/8, 1.1/4, 1.5/16, 1.3/8, 1.1/2, 1.5/8, 1.3/4, 1.7/8, 2
2517	MM INCH	18, 19, 20, 22, 24, 25, 28, 30, 32, 35, 38, 40, 42, 45, 48, 50, 55, 60 3/4, 7/8, 1, 1.1/8, 1.1/4, 1.3/8, 1.1/2, 1.5/8, 1.3/4, 1.7/8, 2, 2.1/8, 2.1/4, 2.3/8, 2.1/2
3020	MM INCH INCH	25, 28, 30, 32, 35, 38, 40, 42, 45, 48, 50, 55, 60, 65, 70, 75 1, 1.1/8, 1.1/4, 1.3/8, 1.1/2, 1.3/4, 1.5/8, 1.7/8, 2, 2.1/8, 2.1/4, 2.3/8, 2.1/2, 2.5/8, 2.3/4, 2.7/8, 3
3030	MM INCH INCH	25, 28, 30, 32, 35, 38, 40, 42, 45, 48, 50, 55, 60, 65, 70, 75 1, 1.1/8, 1.1/4, 1.3/8, 1.1/2, 1.5/8, 1.3/4, 1.7/8, 2, 2.1/8, 2.1/4, 2.3/8, 2.1/2, 2.5/8, 2.3/4, 2.7/8, 3
3535	MM INCH INCH	35, 38, 40, 42, 45, 48, 50, 55, 60, 65, 70, 75, 80, 85, 90 1.3/8, 1.1/2, 1.5/8, 1.3/4, 1.7/8, 2, 2.1/8, 2.1/4, 2.3/8, 2.1/2, 2.5/8, 2.3/4, 2.7/8, 3, 3.1/8, 3.1/4, 3.3/8, 3.1/2,
4030	MM INCH	40, 42, 45, 48, 50, 55, 60, 65, 70, 75, 80, 85, 90, 95, 100 1.3/8, 1.1/2, 1.3/4, 1.7/8, 2, 2.1/8, 2.1/4, 2.1/2, 2.5/8, 2.3/4, 2.7/8, 3, 3.1/4, 3.1/2, 3.3/4, 4
4040	MM INCH	40, 42, 45, 48, 50, 55, 60, 65, 70, 75, 80, 85, 90, 95, 100 1.3/8, 1.1/2, 1.3/4, 1.7/8, 2, 2.1/8, 2.1/4, 2.1/2, 2.5/8, 2.3/4, 2.7/8, 3, 3.1/4, 3.1/2, 3.3/4, 4
4545	MM INCH	60, 65, 70, 75, 80, 85, 90, 95, 100, 105, 110 2.1/4, 2.3/8, 2.1/2, 2.3/4, 2.7/8, 3, 3.1/8, 3.1/4, 3.3/8, 3.1/2, 3.3/4, 4, 4.1/4, 4.1/2
5050	MM INCH	70, 75, 80, 85, 90, 95, 100, 110, 115, 120, 125 2.3/4, 2.7/8, 3, 3.1/4, 3.1/2, 3.3/4, 4, 4.1/4, 4.1/2, 4.3/4, 5

PART NUMBER EXAMPLE



W-LOCK WELD ON HUB 'W' SERIES

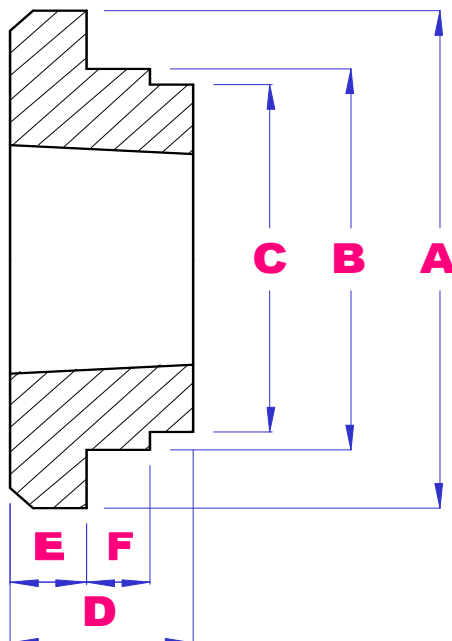


HUB SIZE	SUITS BUSH	A mm	B mm	C mm	D mm	E mm	F mm
W12	1215	73.03	63.50	62.17	38.10	15.88	9.53
W16	1615	82.55	73.03	72.24	38.10	15.88	9.53
W20	2017	101.60	88.90	88.11	44.45	19.05	14.45
W25	2517	127.00	111.13	110.34	44.45	19.05	12.70
W30	3030	149.86	133.35	132.56	76.20	25.40	19.05
W35	3535	184.15	158.75	157.96	88.90	31.75	25.4
W40	4040	225.43	196.85	196.06	101.60	31.75	31.75
W45	4545	254.00	222.25	221.46	114.30	38.10	38.10
W50	5050	276.00	241.00	240.25	127.00	38.10	38.10



-LOCK

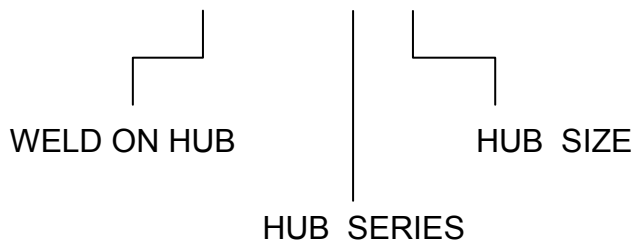
WELD ON HUB 'WH' SERIES



HUB SIZE	SUITS BUSH	A mm	B mm	C mm	D mm	E mm	F mm
WH12	1210	70.0	65.0	64.5	25.0	9.0	10.0
WH16	1610	80.0	75.0	74.5	25.0	9.0	10.0
WH20	2012	95.0	90.0	89.5	32.0	12.0	12.0
WH25	2517	115.0	110.0	109.5	44.0	19.0	15.0
WH30	3020	145.0	140.0	139.5	50.0	20.0	15.0
WH35	3525	190.0	180.0	179.5	65.0	25.0	25.0
WH40	4040	200.0	190.0	189.5	101.0	32.0	30.0
WH45	4545	210.0	200.0	199.5	114.0	40.0	30.0
WH50	5050	230.0	220.0	219.5	127.0	40.0	35.0

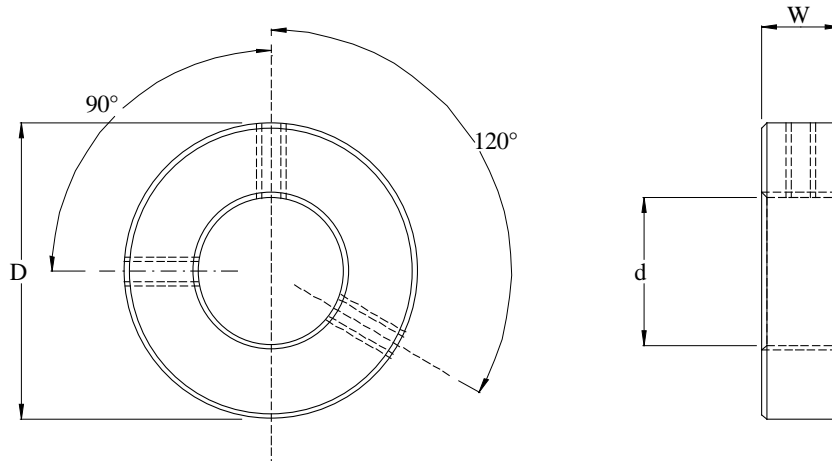
PART NUMBER EXAMPLE

WOH-WH12





METRIC SHAFT COLLARS



SCM-06, 08, 10 GRUB SCREWS @ 120 DEG
SCM-12 – SCM-75 GRUB SCREWS @ 90 DEG

PART NO	d mm	D mm	W mm	Screw x 2	Weight gm
SCM-06	6	22.2	13.5	M5x0.8	36
SCM-08	8	22.2	13.5	M5x0.8	35
SCM-10	10	22.2	13.5	M5x0.8	32
SCM-12	12	28.6	13.5	M6x1	52
SCM-14	14	28.6	13.5	M6x1	50
SCM-16	16	28.6	13.5	M6x1	45
SCM-20	20	33.3	13.5	M6x1	56
SCM-22	22	38.1	13.5	M6x1	77
SCM-24	24	44.5	15.9	M8x1	130
SCM-25	25	44.5	15.9	M8x1	128
SCM-28	28	44.5	15.9	M8x1	113
SCM-30	30	44.5	15.9	M8x1	102
SCM-32	32	55.5	17.5	M8x1	214
SCM-35	35	55.5	17.5	M8x1	192
SCM-38	38	63.5	18.3	M10x1.25	238
SCM-40	40	63.5	18.3	M10x1.25	265
SCM-42	42	63.5	18.3	M10x1.25	247
SCM-45	45	69.9	18.3	M10x1.25	309
SCM-48	48	76.2	20.0	M10x1.25	431
SCM-50	50	76.2	20.0	M10x1.25	405
SCM-60	60	90	20.0	M10x1.25	540
SCM-70	70	100	20.0	M10x1.25	607
SCM-75	75	110	22.0	M12X1.5	845

STANDARD MATERIAL = MILD STEEL ZINC PLATED
FOR 304 STAINLESS STEEL, ADD SUFFIX '-SS' TO PART NUMBER

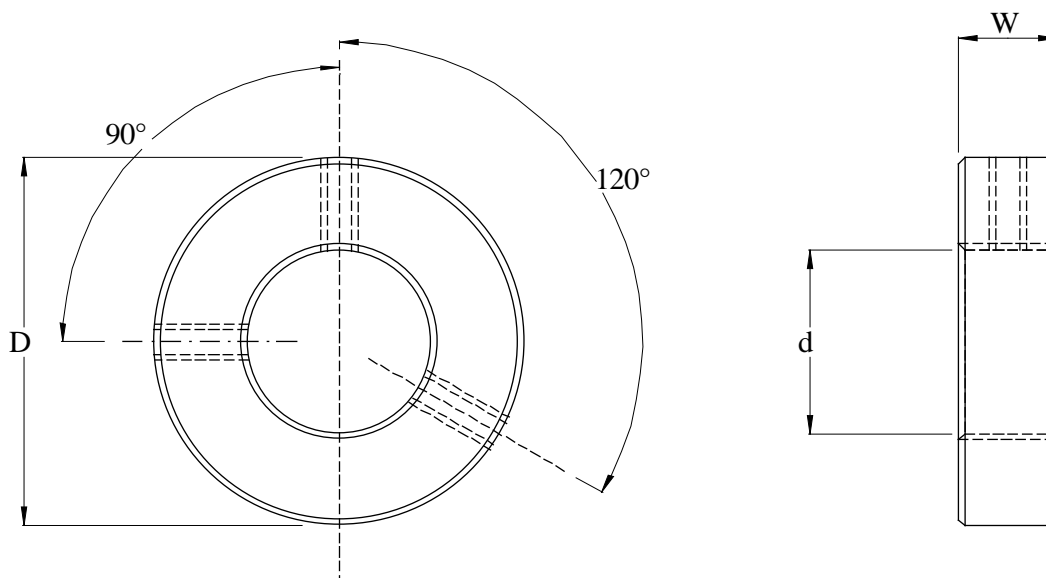
TOLERANCE = d – 0.01 + 0.01mm

D – 0.1 + 0.1 mm

W – 0.1 + 0.1 mm



INCH SHAFT COLLARS



SCI-1/4, 5/16, 3/8 GRUB SCREWS @ 120 DEG
SCI-7/16 – SCI-3 GRUB SCREWS @ 90 DEG

PART NO	d in	D in	W mm	Screw x 2	Weight gm
SCI-1/4	0.25	0.875	13.5	M5X0.8	37
SCI-5/16	0.3125	0.875	13.5	M5X0.8	35
SCI-3/8	0.375	0.875	13.5	M5X0.8	32
SCI-7/16	0.4375	1.125	13.5	M6x1	55
SCI-1/2	0.50	1.125	13.5	M6x1	52
SCI-5/8	0.625	1.125	13.5	M6x1	45
SCI-3/4	0.75	1.312	13.5	M6x1	60
SCI-7/8	0.875	1.5	13.5	M6x1	76
SCI-1	1.00	1.75	15.9	M8x1	126
SCI-1.1/8	1.125	1.75	15.9	M8x1	110
SCI-1.1/4	1.25	2.187	17.5	M8x1	216
SCI-1.3/8	1.375	2.187	17.5	M8x1	193
SCI-1.1/2	1.5	2.37	18.3	M8x1	237
SCI-1.5/8	1.625	2.5	18.3	M8x1	253
SCI-1.3/4	1.75	2.75	18.3	M10x1.25	313
SCI-2	2.00	3.0	20.7	M10x1.25	398
SCI-2.1/4	2.25	3.23	23.8	M10x1.25	494
SCI-2.1/2	2.50	3.47	25.4	M10X1.25	573
SCI-3	3.00	4.22	28.6	M12X1.5	967

STANDARD MATERIAL = MILD STEEL ZINC PLATED
FOR 304 STAINLESS STEEL, ADD SUFFIX '-SS' TO PART NUMBER

TOLERANCE = d - 0.01 + 0.01mm

D - 0.1 + 0.1 mm

W - 0.1 + 0.1 mm

-LOCK

KEY STEEL – 300MM LENGTHS

METRIC - SQUARE	IMPERIAL - SQUARE
4mm	1/8'
5mm	3/16'
6mm	1/4'
8mm	5/16'
10mm	3/8'
12mm	7/16'
14mm	1/2'
16mm	9/16'
18mm	5/8'
22mm	3/4'
	7/8'
	1'
	1.1/4'
METRIC - RECTANGLE	IMPERIAL - RECTANGLE
8mm X 7mm	1/4' X 3/16'
10mm X 8mm	5/16' X 1/4'
12mm X 8mm	3/8' X 5/16'
12mm X 10mm	1/2' X 5/16'
14mm X 9mm	1/2' X 3/8'
16mm X 10mm	5/8' X 7/16'
18mm X 11mm	5/8' X 1/2'
20mm X 12mm	
22mm X 14mm	
25mm X 14mm	
28mm X 16mm	
32mm X 18mm	



-LOCK KEY STEEL

CUT & ROUNDED LENGTHS IN PACKS OF 10

METRIC - SQUARE	IMPERIAL - SQUARE
3mm X 3mm X 19mm LONG	1/8' X 1/8' X 3/4' LONG
3mm X 3mm X 20mm LONG	1/8' X 1/8' X 1' LONG
3mm X 3mm X 25mm LONG	3/16' X 3/16' X 3/4' LONG
5mm X 5mm X 20mm LONG	3/16' X 3/16' X 1' LONG
5mm X 5mm X 25mm LONG	3/16' X 3/16' X 1.1/4' LONG
5mm X 5mm X 30mm LONG	1/4' X 1/4' X 3/4' LONG
5mm X 5mm X 32mm LONG	1/4' X 1/4' X 1.1/4' LONG
6mm X 6mm X 19mm LONG	1/4' X 1/4' X 1.1/2' LONG
6mm X 6mm X 20mm LONG	5/16' X 5/16' X 1.1/4' LONG
6mm X 6mm X 30mm LONG	5/16' X 5/16' X 1.1/2' LONG
6mm X 6mm X 32mm LONG	3/8' X 3/8' X 1.1/4' LONG
6mm X 6mm X 38mm LONG	3/8' X 3/8' X 1.1/2' LONG
6mm X 6mm X 40mm LONG	1/2' X 1/2' X 1.1/2' LONG
8mm X 8mm X 30mm LONG	
8mm X 8mm X 32mm LONG	
8mm X 8mm X 38mm LONG	
8mm X 8mm X 40mm LONG	
10mm X 10mm X 30mm LONG	
10mm X 10mm X 40mm LONG	
12mm X 12mm X 38mm LONG	
12mm X 12mm X 40mm LONG	
METRIC - RECTANGLE	
7mm X 8mm X 30mm LONG	
7mm X 8mm X 40mm LONG	
8mm X 10mm X 30mm LONG	
8mm X 10mm X 40mm LONG	
8mm X 12mm X 40mm LONG	



-LOCK

DISTRIBUTED BY: