

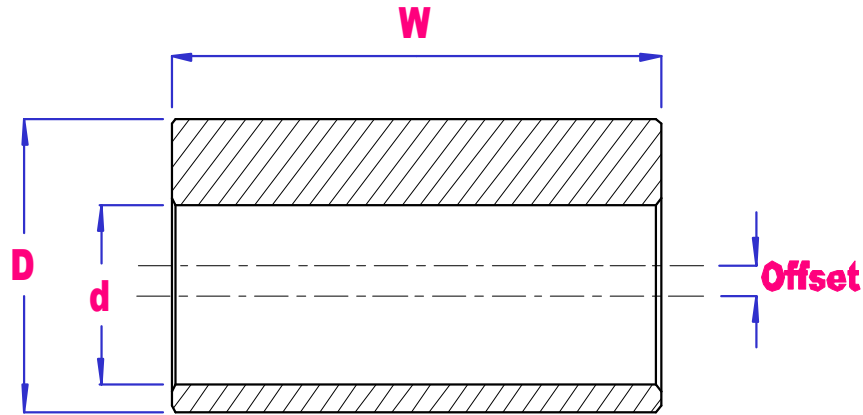


# UBC

## METRIC & INCH CAMFOLLOWER ECCENTRIC BUSHES



Quality  
Endorsed  
Company  
ISO 9001:2000  
LIC QEC20818



PART NO	d mm	D mm	W mm	OFFSET mm	Wgt g
EB-6	6	9	7	0.5	2
EB-8	8	11	9	0.5	3
EB-10	10	13	10	0.5	4
EB-12	12	15	11	0.5	6
EB-16	16	20	14	1.0	13
EB-18	18	22	16	1.0	16
EB-20	20	24	18	1.0	20
EB-24	24	28	22	1.0	28
EB-30	30	35	29	1.5	39

PART NO	d inch		D inch		W inch		OFFSET inch	Wgt g
EB-3/16	3/16	0.1875	1/4	0.25	3/8	0.375	0.010	1.4
EB-1/4	1/4	0.25	3/8	0.375	7/16	0.4375	0.015	3
EB-5/16	5/16	0.3125	1/2	0.50	7/16	0.4375	0.015	5
EB-3/8	3/8	0.375	1/2	0.50	1/2	0.50	0.015	8
EB-7/16	7/16	0.4375	5/8	0.625	1/2	0.50	0.030	9
EB-1/2	1/2	0.50	11/16	0.6875	5/8	0.625	0.030	15
EB-5/8	5/8	0.625	7/8	0.875	3/4	0.75	0.030	25
EB-3/4	3/4	0.75	1	1.00	7/8	0.875	0.030	32
EB-7/8	7/8	0.875	1.3/16	1.1875	1	1.00	0.030	44
EB-1	1	1.00	1.3/8	1.375	1.1/8	1.125	0.030	53
EB-1.1/4	1.1/4	1.25	1.3/4	1.75	1.1/4	1.25	0.060	74
EB-1.3/8	1.3/8	1.375	1.13/16	1.8125	1.3/8	1.375	0.060	97
EB-1.1/2	1.1/2	1.50	2	2.00	2	2.00	0.060	138