

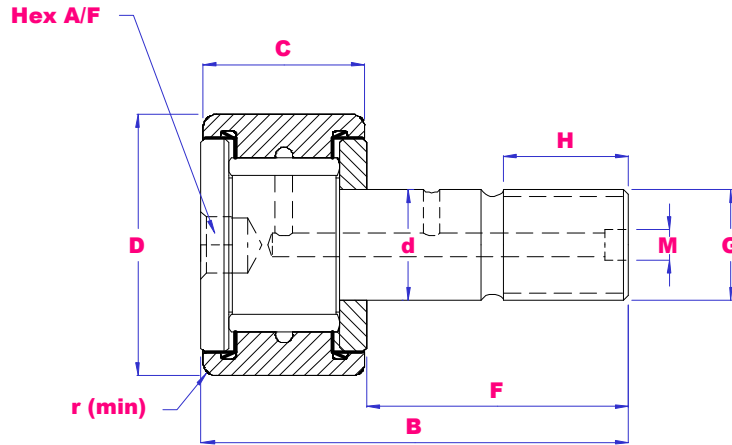


UBC

INCH CAMFOLLOWERS



Quality
Endorsed
Company
ISO 9001:2000
LIC QEC20818



PART NO	d	D	C	B	F	G	H	M	r min	Load D-kN	Load S-kN	Max rpm	Wgt g
CF1/2SB	3/16 4.826	1/2 12.7	11/32 8.731	1.1/32 26.193	5/8 15.875	10-32	1/4 6.35	1/8 3.175	1/64 0.397	4.8	5.5	15000	10
CF5/8SB	1/4 6.35	5/8 15.875	13/32 10.319	1.7/32 30.956	3/4 19.05	1/4-28	5/16 7.938	1/8 3.175	1/64 0.397	6.5	8.7	11000	21
CF3/4SB	3/8 9.525	3/4 19.05	1/2 12.7	1.13/32 35.719	7/8 22.225	3/8-24	3/8 9.525	3/16 4.762	1/32 0.794	8.9	12.5	8000	36
CF7/8SB	3/8 9.525	7/8 22.225	1/2 12.7	1.13/32 35.719	7/8 22.225	3/8-24	3/8 9.525	3/16 4.762	1/32 0.794	8.9	12.5	8000	47
CF1SB	7/16 11.112	1 25.4	5/8 15.875	1.21/32 42.063	1 25.4	7/16-20	1/2 12.7	3/16 4.762	3/64 1.191	13.3	23.1	6500	74
CF1.1/8SB	7/16 11.112	1.1/8 28.575	5/8 15.875	1.21/32 42.063	1 25.4	7/16-20	1/2 12.7	3/16 4.762	1/16 1.588	13.3	23.1	6500	85
CF1.1/4SB	1/2 12.7	1.1/4 31.75	3/4 19.05	2.1/32 51.594	1.1/4 31.75	1/2-20	5/8 15.875	3/16 4.762	1/16 1.588	24.1	32.3	5500	137
CF1.3/8SB	1/2 12.7	1.3/8 34.925	3/4 19.05	2.1/32 51.594	1.1/4 31.75	1/2-20	5/8 15.875	3/16 4.762	1/16 1.588	24.1	32.3	5500	160
CF1.1/2SB	5/8 15.875	1.1/2 38.1	7/8 22.225	2.13/32 61.119	1.1/2 38.1	5/8-18	3/4 19.05	3/16 4.762	1/16 1.588	28.7	40.9	4500	230
CF1.5/8SB	5/8 15.875	1.5/8 41.275	7/8 22.225	2.13/32 61.119	1.1/2 38.1	5/8-18	3/4 19.05	3/16 4.762	1/16 1.588	28.7	40.9	4500	265
CF1.3/4SB	3/4 19.05	1.3/4 44.45	1 25.4	2.25/32 70.644	1.3/4 44.45	3/4-16	7/8 22.225	3/16 4.762	1/16 1.588	35.9	56.7	4000	372
CF1.7/8SB	3/4 19.05	1.7/8 47.625	1 25.4	2.25/32 70.644	1.3/4 44.45	3/4-16	7/8 22.225	3/16 4.762	1/16 1.588	35.9	56.7	4000	418
CF2SB	7/8 22.225	2 50.8	1.1/4 31.75	3.9/32 83.343	2 50.8	7/8-14	1 25.4	3/16 4.762	1/16 1.588	46.6	82.2	3500	587
CF2.1/4SB	7/8 22.225	2.1/4 57.15	1.1/4 31.75	3.9/32 83.343	2 50.8	7/8-14	1 25.4	3/16 4.762	1/16 1.588	46.6	82.2	3500	717
CF2.1/2SB	1 25.4	2.1/2 63.5	1.1/2 38.1	3.25/32 96.044	2.1/4 57.15	1-14	1.1/8 28.575	3/16 4.762	1/16 1.588	62.6	119	3000	1060
CF2.3/4SB	1 25.4	2.3/4 69.85	1.1/2 38.1	3.25/32 96.044	2.1/4 57.15	1-14	1.1/8 28.575	3/16 4.762	1/16 1.588	62.6	119	3000	1250
CF3SB	1.1/4 31.75	3 76.2	1.3/4 44.45	4.9/32 108.74	2.1/2 63.5	1.1/4-12	1.1/4 31.75	1/4 6.35	3/32 2.382	79.7	176	2400	1934
CF3.1/2SB	1.3/8 34.925	3.1/2 88.9	2 50.8	4.25/32 121.44	2.3/4 69.85	1.3/8-12	1.3/8 34.925	1/4 6.35	3/32 2.382	113.6	246	2100	2915
CF4SB	1.1/2 38.1	4 101.6	2.1/4 57.15	5.25/32 146.84	3.1/2 88.9	1.1/2-12	1.1/2 38.1	1/4 6.35	3/32 2.382	144.5	325	1900	4295
CF5SB	2 50.8	5 127	2.75 69.85	7.27/32 199.23	5.1/16 128.59	2-12	2.9/16 65.09	1/4 6.35	1/8 3.175	222.2	575	1400	8735