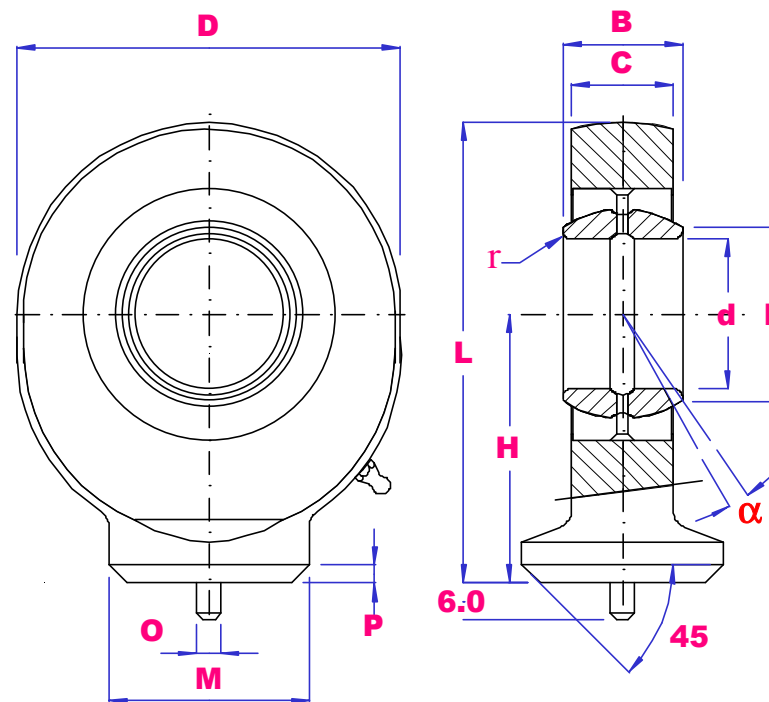




WELD ON SK TYPE RODENDS STEEL / STEEL



PART NO	d	B	E	C	D	H	L	M	O	P	r	α deg	Load kN		Wgt kg
													Dyn	Stat	
SK10E	10	9	16	7	29	24	38.5	15	3	2	0.3	12	8.1	15	0.041
SK12E	12	10	18	8	34	27	44	18	3	2	0.3	10	10	21	0.066
SK15ES	15	12	22	10	40	31	51	20	4	2.5	0.3	8	16	32	0.12
SK17ES	17	14	25	11	46	35	58	23	4	2.5	0.3	10	21	40	0.19
SK20ES	20	16	29	13	53	38	64.5	27	4	2.5	0.3	9	30	54	0.26
SK25ES	25	20	35.5	17	64	45	77	32	4	3	0.6	7	48	72	0.45
SK30ES	30	22	40.7	19	73	51	87.5	37	4	3	0.6	6	62	95	0.67
SK35ES	35	25	47	21	82	61	102	42	4	3	0.6	6	79	125	1.02
SK40ES	40	28	53	23	92	69	115	48	4	4	0.6	7	99	156	1.40
SK45ES	45	32	60	27	102	77	128	52	6	5	0.6	7	127	208	1.93
SK50ES	50	35	66	30	112	88	144	60	6	5	0.6	6	156	250	2.69
SK60ES	60	44	80	38	135	100	167.5	75	6	5	1.0	6	245	390	4.60
SK70ES	70	49	92	42	160	115	195	87	6	6	1.0	6	313	510	7.0
SK80ES	80	55	105	47	180	141	231	100	6	6	1.0	6	400	620	11.0