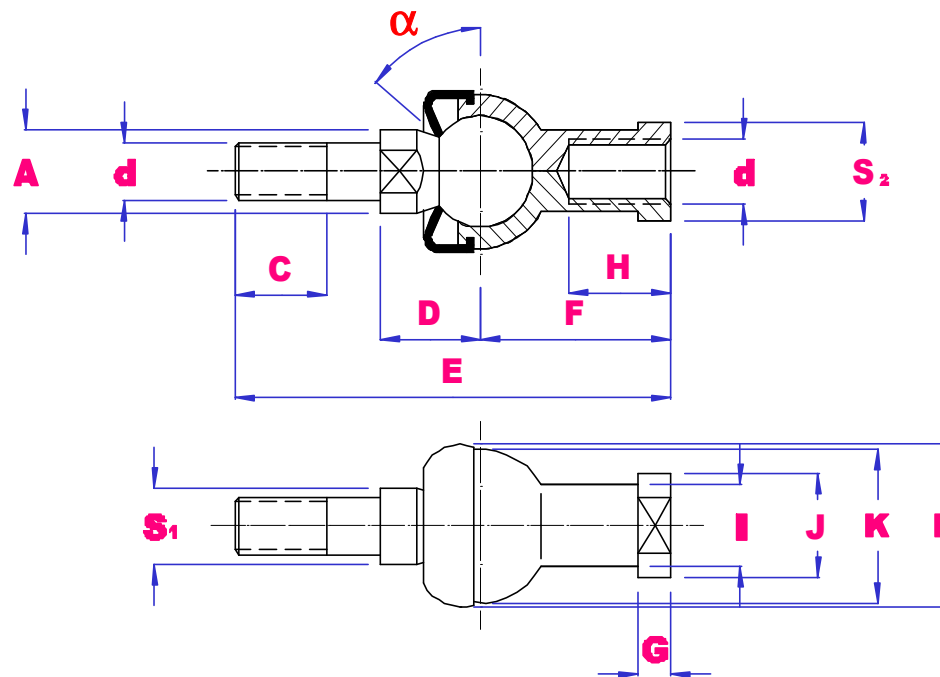




SQZ METRIC STUD TYPE RODENDS STEEL / ZINC ALLOY



PART NO	d 6H	A	B	C	D	E	F	G	H	I	J	K	S1	S2	α deg	Load kN Stat	Wgt g
SQZ5-RS	M5X0.8	9	19	8	11	46	24	4	12	9	11	17	7	9	15	2.8	25
SQZ6-RS	M6X1	10	20	11	12.2	55.2	28	5	15	10	13	20	8	11	15	3.7	41
SQZ8-RS	M8X1.25	12	24	12	16	65	32	5	16	12.5	16	24	10	14	15	5.8	75
SQZ10-RS	M10X1.25	14	30	15	19.5	74.5	35	6.5	18	15	19	28	11	17	15	8.4	120
SQZ10-RSB5	M10X1.5	14	30	15	19.5	74.5	35	6.5	18	15	19	28	11	17	15	8.4	120
SQZ12-RS	M12X1.25	17	32	17	21	84	40	6.5	20	17.5	22	32	15	19	15	11	180
SQZ12-RSB5	M12X1.75	17	32	17	21	84	40	6.5	20	17.5	22	32	15	19	15	11	180
SQZ14-RS	M14X1.5	19	38	22	23.5	103	45	8	25	20	25	36	17	22	11	15	270
SQZ16-RS	M16X1.5	22	44	23	25.5	112	50	8	27	22	27	40	19	22	11	15	360
SQZ18-RS	M18X1.5	23	45	25	31	130.5	58	10	32	25	31	45	20	27	11	19	540
SQZ20-RS	M20X1.5	27	50	25	29	133	63	10	38	27.5	34	45	24	30	7.5	19	570
SQZ22-RS	M22X1.5	27	52	26	33	145	70	12	43	30	37	50	24	32	7.5	23	760

THE FULL RANGE IS AVAILABLE IN LEFT HAND THREAD USE PART NO SQZL-RS