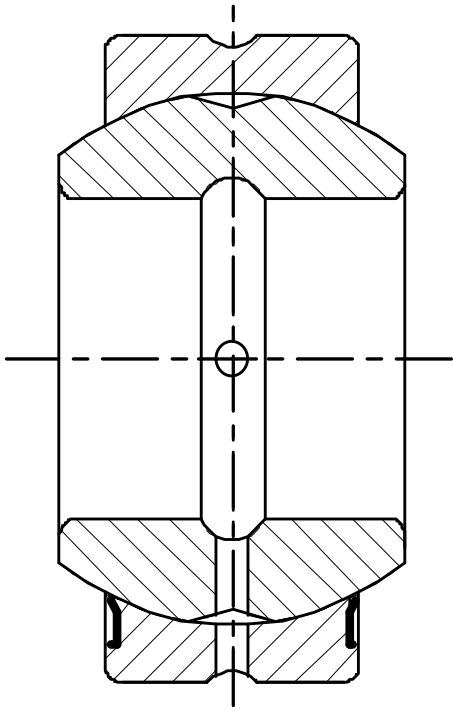




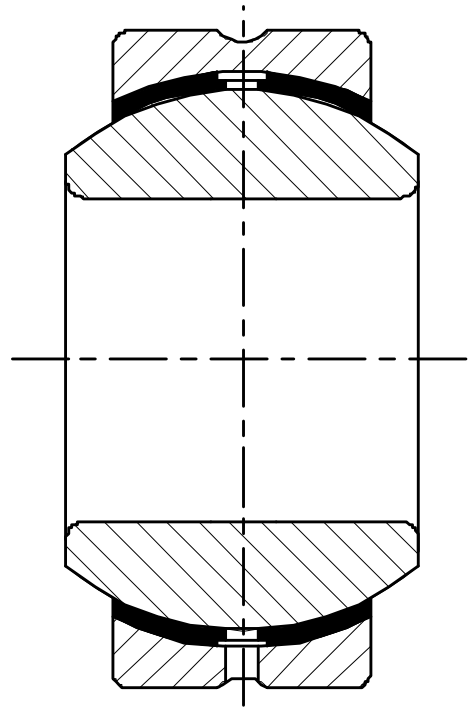
INDEX



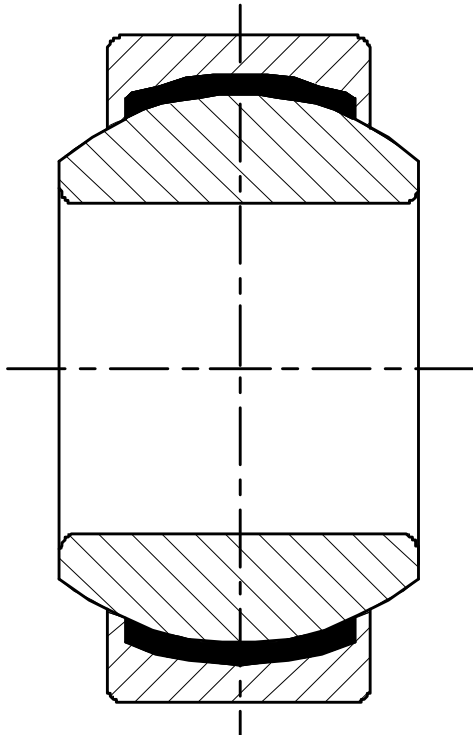
PRODUCT		PAGE	
TYPICAL DRAWINGS		1-2	
METRIC	GE-ES	4 – 10MM ID	3
	GEG-ES	12 – 16MM ID	4
	GE-ET	17 – 22MM ID	5
	GE-ET/X	25 – 30MM ID	6
	GEG-ET	32 – 45MM ID	7
	GEBJ-S	50 – 70MM ID	8
	GEBJ-C	75 – 100MM ID	9
	GEBK-S	110 – 180MM ID	10
	GEF-ES	200 – 320MM ID	11
	GEEM-ES		
	GEEW-ES		
GEK-XS			
INCH	GEZ-ES	3/16" – 3/4" ID	12
	GEGZ-ES	7/8" – 1.3/4" ID	13
	GEZ-ET	2.00" – 3.1/4" ID	14
	GEGZ-ET	3.1/2" – 4.3/4" ID	15
		5.00" – 12.00" ID	16
ANGULAR CONTACT	GAC-S	25 – 100MM ID	17
	GAC-T	105 – 200MM ID	18
	GACZ	1/2" – 6.0" ID	19
THRUST	GX-S	10 – 80MM ID	20
	GX-T	100 – 200MM ID	21
INCH – METRIC CONVERSION		22	
METRIC – INCH CONVERSION		24	



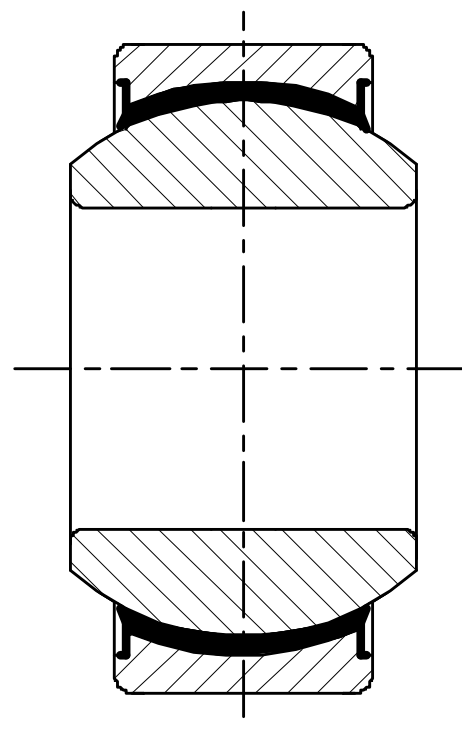
TYPES: GE-ES, GEG-ES
 GEZ-ES, GEGZ-ES
 GEF-ES, GEBJ-S
 STEEL - STEEL



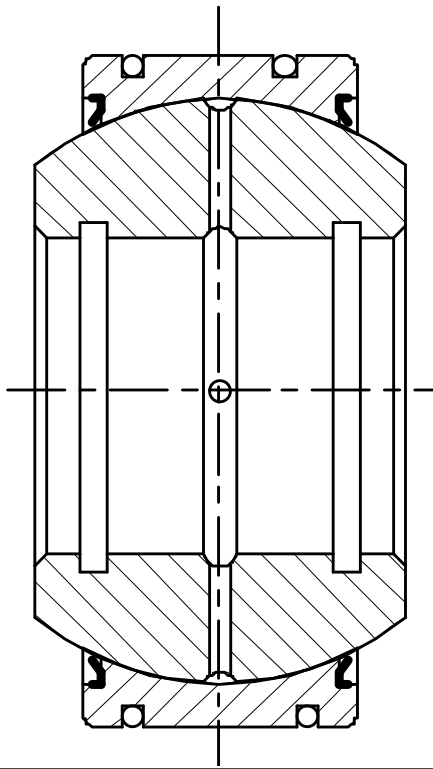
TYPE: GEBK-S
 STEEL - BRONZE



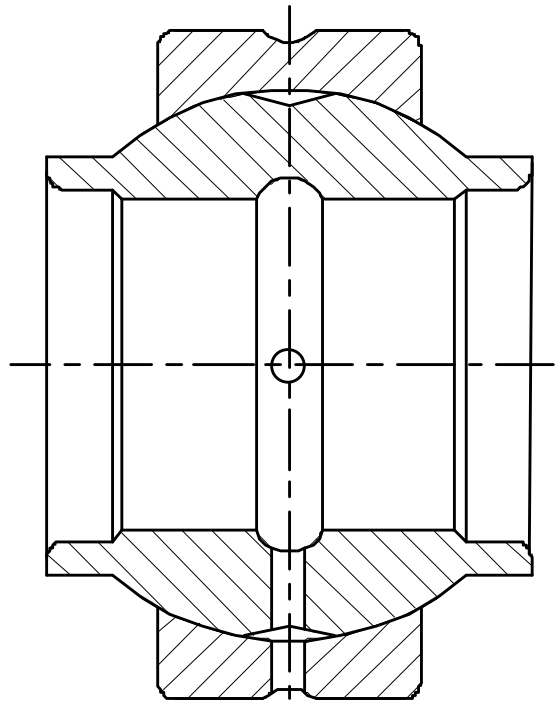
TYPES: GE-C, GEG-C
 GEBJ-C
 STEEL - PTFE



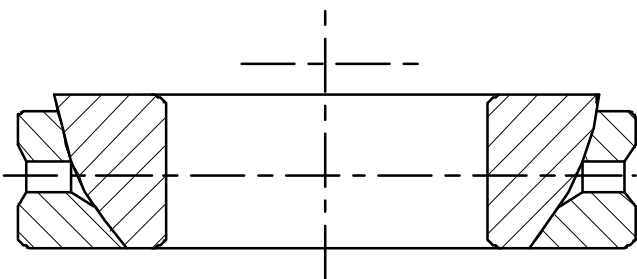
TYPES: GE-ET, GEG-ET
 GEZ-ET, GEGZ-ET
 GE-XT, GEG-XT
 STEEL - PTFE
 GE-ET/X, GE-XT/X
 STAINLESS STEEL-PTFE



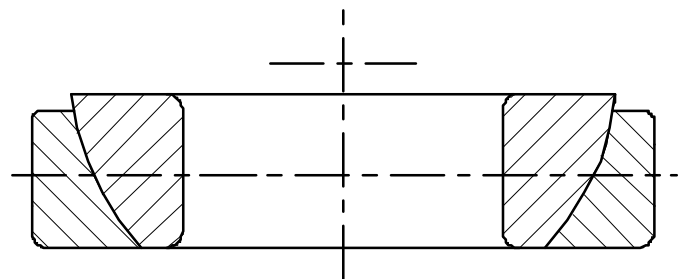
TYPE: GEK-XS
STEEL - STEEL



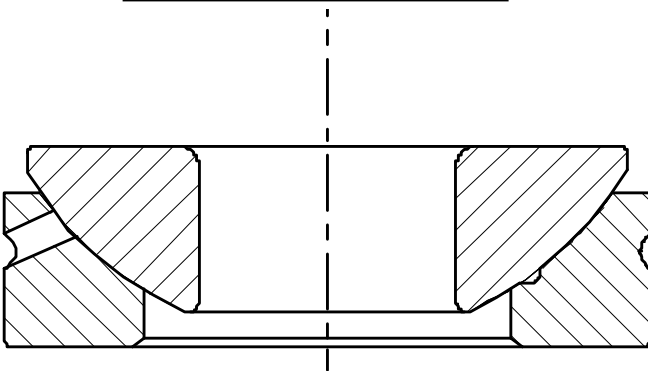
TYPES: GEEM-ES
GEEW-ES
STEEL - STEEL



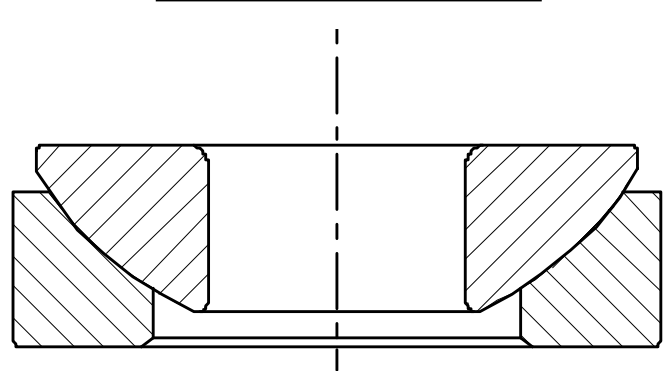
TYPE: GAC-S
STEEL - STEEL



TYPE: GAC-T
STEEL - PTFE



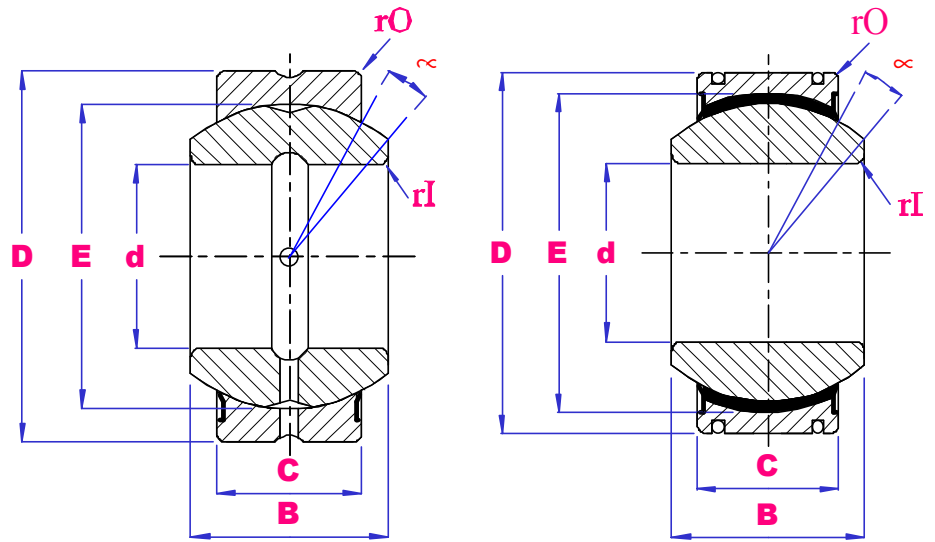
TYPE: GX-S
STEEL - STEEL



TYPE: GX-T
STEEL - PTFE

UBC

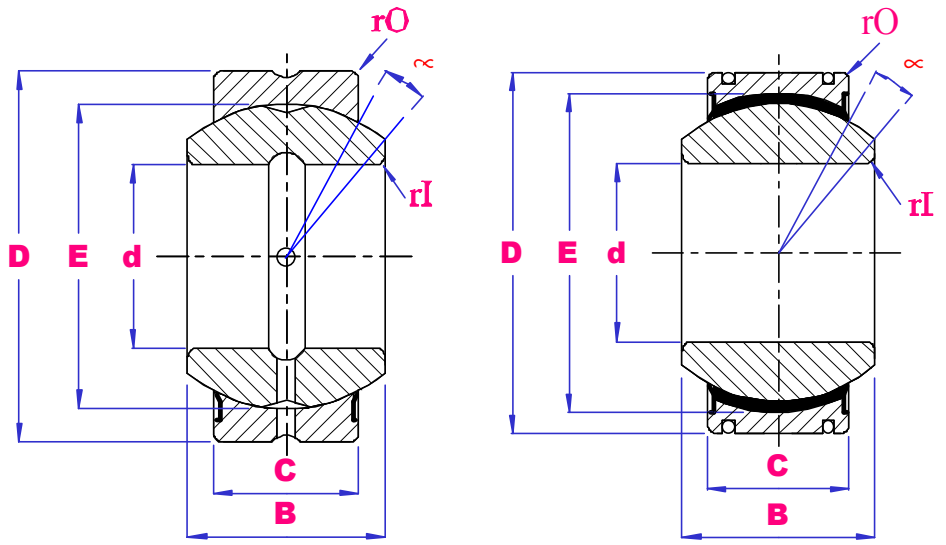
SPHERICAL PLAIN BEARINGS 4 - 10MM ID



PART NO	d mm	D mm	B mm	C mm	E mm	r min	α deg	load		Wgt kg
								DkN	SkN	
GE4E	4	12	5	3	8	0.3	16	2	10	0.003
GE4C		12	5	3	8	0.3	16	2.1	5.4	0.003
GEG4E		14	7	4	10	0.3	20	3.4	17	0.005
GEG4C		14	7	4	10	0.3	20	3.6	9.1	0.005
GEBJ5S	5	13	8	6	11.112	0.3	13	3.2	9	0.007
GEBJ5C		13	8	6	11.112	0.3	13	6	15	0.007
GE5E		14	6	4	10	0.3	13	3.4	17	0.005
GE5C		14	6	4	10	0.3	13	3.6	9.1	0.005
GEG5E		16	9	5	10	0.3	21	5.5	27	0.008
GEG5C		16	9	5	13	0.3	21	5.8	14	0.008
GEBK5S		16	8	6	11.112	0.3	13	3.3	7.8	0.009
GE6E	6	14	6	4	10	0.3	13	3.4	17	0.004
GE6C		14	6	5	13	0.3	13	5.8	14	0.004
GEBJ6S		16	9	6.75	12.7	0.3	13	4.1	12	0.010
GEBJ6C		16	9	6.75	12.7	0.3	13	7.7	19	0.010
GEG6E		16	9	5	13	0.3	21	5.5	27	0.006
GEG6C		16	9	5	13	0.3	21	5.8	14	0.006
GEBK6S		18	9	6.75	12.7	0.3	13	4.3	9.8	0.013
GE8E	8	16	8	5	13	0.3	15	5.5	27	0.008
GE8C		16	8	5	13	0.3	15	5.8	14	0.008
GEBJ8S		19	12	9	15.88	0.3	13	6.5	20	0.016
GEBJ8C		19	12	9	15.88	0.3	13	13	32	0.016
GEG8E		19	11	6	16	0.3	21	8.1	40	0.014
GEG8C		19	11	6	16	0.3	21	8.6	21	0.014
GEBK8S		22	12	9	15.88	0.3	14	6.8	16	0.024
GE10E	10	19	9	6	16	0.3	12	8.1	40	0.011
GE10C		19	9	6	16	0.3	12	8.6	21	0.011
GEBJ10S		22	14	10.5	19.05	0.6	13	9.6	28	0.031
GEBJ10C		22	14	10.5	19.05	0.6	13	18	45	0.031
GEG10E		22	12	7	18	0.3	18	10	53	0.021
GEG10C		22	12	7	18	0.3	18	11	28	0.021
GEBK10S		26	14	10.5	19.05	0.6	14	10	23	0.039

UBC

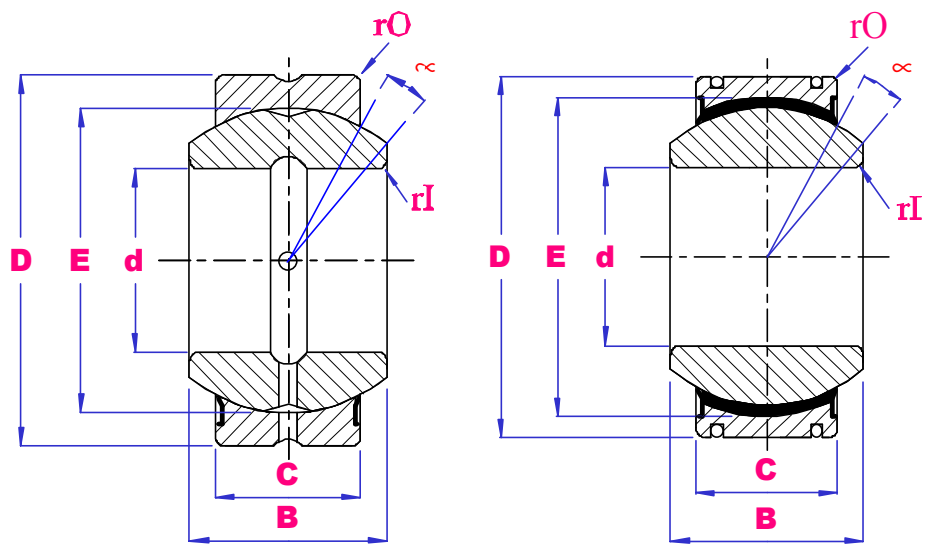
SPHERICAL
PLAIN
BEARINGS
12 - 16MM ID



PART NO	d mm	D mm	B mm	C mm	E mm	r min	α deg	load		Wgt kg
								DkN	SkN	
GE12E	12	22	10	7	18	0.3	10	10	53	0.015
GE12C		22	10	7	18	0.3	10	11	28	0.015
GEEW12ES		22	12	7	18	0.3	4	10	53	0.022
GEF12ES		22	11	9	18	0.5	7	13	68	0.019
GEBJ12S		26	16	12	22.23	0.6	13	12	37	0.055
GEBJ12C		26	16	12	22.23	0.6	13	24	60	0.055
GEG12ES		26	15	9	22	0.3	18	16	84	0.033
GEG12C		26	15	9	22	0.3	18	18	45	0.033
GEBK12S		30	16	12	22.23	0.6	13	13	31	0.058
GEBJ14S		14	28	19	13.5	25.4	0.6	15	16	49
GEBJ14C	28		19	13.5	25.4	0.6	15	31	77	0.078
GEBK14S	34		19	13.5	25.4	0.6	16	17	40	0.084
GE15ES-2RS	15	26	12	9	22	0.3	8	16	84	0.027
GE15C		26	12	9	22	0.3	8	18	45	0.027
GE15ET-2RS		26	12	9	22	0.3	8	25	59	0.027
GE15ET/X		26	12	9	22	0.3	8	25	59	0.027
GEEW15ES		26	15	9	22	0.3	5	16	84	0.031
GEF15ES		26	13	11	22	0.5	6	20	102	0.028
GEG15ES-2RS		30	16	10	25	0.3	16	21	106	0.049
GEG15C		30	16	10	25	0.3	16	22	56	0.049
GEG15ET-2RS		30	16	10	25	0.3	16	32	75	0.049
GEEW16ES	16	28	16	9	23	0.3	4	17	85	0.035
GEBJ16S		32	21	15	28.58	0.6	15	20	61	0.095
GEBJ16C		32	21	15	28.58	0.6	15	38	96	0.095
GEBK16S		38	21	15	28.58	0.6	15	21	50	0.111

UBC

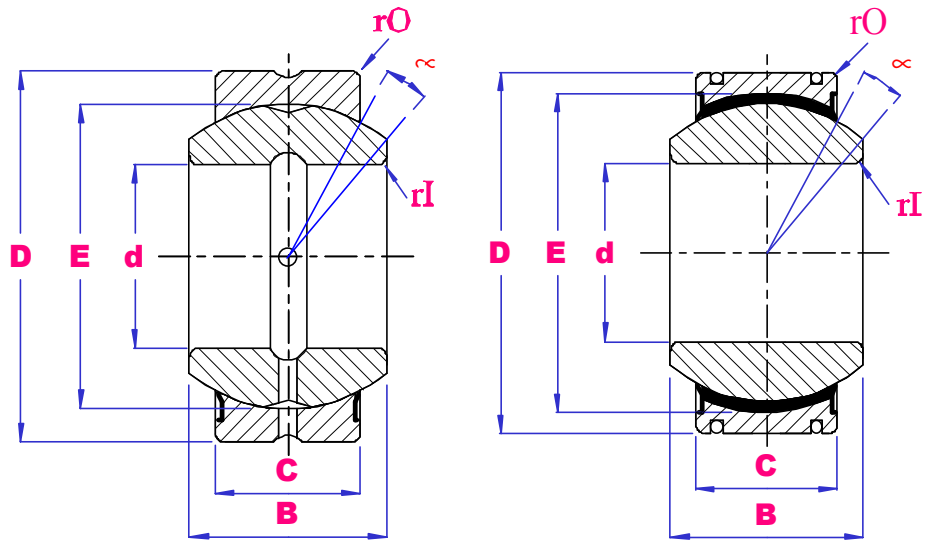
SPHERICAL PLAIN BEARINGS 17 - 22MM ID



PART NO	d mm	D mm	B mm	C mm	E mm	r min	α deg	load		Wgt kg
								DkN	SkN	
GE17ES-2RS	17	30	14	10	25	0.3	10	21	106	0.041
GE17C		30	14	10	25	0.3	10	22	56	0.041
GE17ET-2RS		30	14	10	25	0.3	10	32	75	0.040
GE17ET-X		30	14	10	25	0.3	10	32	75	0.040
GEEW17ES		30	17	10	25	0.3	7	21	106	0.044
GEG17ES-2RS		35	20	12	29	0.3	19	30	146	0.083
GEG17C		35	20	12	29	0.3	19	31	78	0.083
GEG17ET-2RS		35	20	12	29	0.3	19	45	104	0.083
GEBJ18S	18	35	23	16.5	31.75	0.6	15	25	74	0.14
GEBJ18C		35	23	16.5	31.75	0.6	15	47	117	0.14
GEBK18S		42	23	16.5	31.75	0.6	15	26	61	0.16
GE20ES-2RS	20	35	16	12	29	0.3	9	30	146	0.066
GE20C		35	16	12	29	0.3	9	31	78	0.066
GE20ET-2RS		35	16	12	29	0.3	10	45	104	0.064
GE20ET/X		35	16	12	29	0.3	10	45	104	0.064
GEEM20ES-2RS		35	24	12	29	0.3	6	30	146	0.073
GEEW20ES		35	20	12	29	0.3	4	30	146	0.071
GEF20ES		32	16	14	28	0.5	4	33	166	0.053
GEBJ20S		40	25	18	34.93	0.6	15	30	89	0.18
GEBJ20C		40	25	18	34.93	0.6	15	56	141	0.18
GEG20ES-2RS		42	25	16	35.5	0.3	17	48	240	0.153
GEG20C		42	25	16	35.5	0.3	17	51	127	0.153
GEG20ET-2RS		42	25	16	35.5	0.3	17	85	204	0.153
GEBK20S		46	25	18	34.93	0.6	15	31	73	0.21
GEF22ES		22	37	19	16	32	0.5	6	43	217
GEBJ22S	42		28	20	38.1	0.6	15	36	108	0.21
GEBJ22C	42		28	20	38.1	0.6	15	68	171	0.21
GEBK22S	50		28	20	38.1	0.6	15	38	88	0.26

UBC

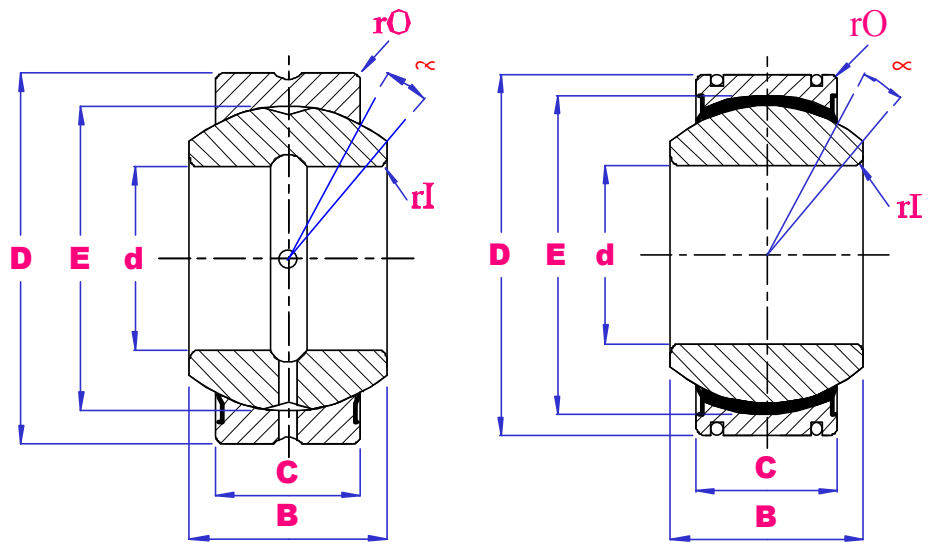
SPHERICAL PLAIN BEARINGS 25 - 30MM ID



PART NO	d mm	D mm	B mm	C mm	E mm	r min	α deg	load		Wgt kg
								DkN	SkN	
GE25ES-2RS	25	42	20	16	35.5	0.6	7	48	240	0.119
GE25C		42	20	16	35.5	0.3	7	51	127	0.119
GE25ET-2RS		42	20	16	35.5	0.6	7	85	204	0.119
GE25ET/X		42	20	16	35.5	0.6	7	85	204	0.119
GEEM25ES-2RS		42	29	16	35.5	0.6	4	48	240	0.13
GEEW25ES		42	25	16	35.5	0.6	4	48	240	0.131
GEF25ES		42	21	18	36	0.5	5	55	275	0.116
GEBJ25S		47	31	22	42.86	0.6	15	45	130	0.35
GEBJ25C		47	31	22	42.86	0.6	15	84	212	0.35
GEG25ES-2RS		47	28	18	40.7	0.6	17	62	310	0.203
GEG25C		47	28	18	40.7	0.6	17	65	166	0.203
GEG25ET-2RS		47	28	18	40.7	0.6	17	110	263	0.203
GEBK25S		56	31	22	42.86	0.6	15	47	110	0.39
GEK25XS-2RS		68	40	28	50	1.0	19	117	590	0.707
GEBK28S	28	62	35	25	47.63	0.6	15	59	138	0.53
GE30ES-2RS	30	47	22	18	40.7	0.6	6	62	310	0.153
GE30C		47	22	18	40.7	0.6	6	65	166	0.163
GE30ET-2RS		47	22	18	40.7	0.6	6	110	263	0.153
GE30ET/X		47	22	18	40.7	0.6	6	110	263	0.153
GEEM30ES-2RS		47	30	18	40.7	0.6	4	62	310	0.17
GEEW30ES		47	30	18	40.7	0.6	4	62	310	0.168
GEF30ES		50	27	23	45	1.0	6	87	459	0.225
GEBJ30S		55	37	25	50.8	0.6	15	61	178	0.56
GEBJ30C		55	37	25	50.8	0.6	15	113	283	0.56
GEG30ES-2RS		55	32	20	47	0.6	17	79	399	0.304
GEG30C		55	32	20	47	0.6	17	83	212	0.304
GEG30ET-2RS		55	32	20	47	0.6	17	140	338	0.304
GEBK30S		66	37	25	50.8	0.6	17	63	148	0.61
GEK30XS-2RS		70	47	32	60	1.0	19	163	813	0.814

UBC

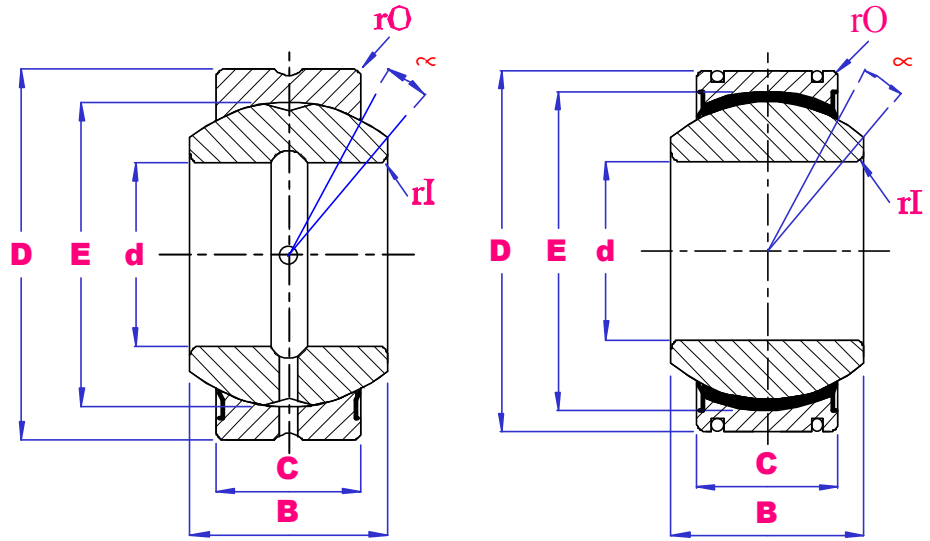
SPHERICAL
PLAIN
BEARINGS
32- 45MM ID



PART NO	d mm	D mm	B mm	C mm	E mm	r min	α deg	load		Wgt kg
								DkN	SkN	
GEEW32ES	32	52	32	18	43	0.6	4	65	328	0.182
GE35ES-2RS	35	55	25	20	47	0.6	6	79	399	0.233
GE35ET-2RS		55	25	20	47	0.6	6	140	338	0.233
GE35ET/X		55	25	20	47	0.6	6	140	338	0.233
GEEM35ES-2RS		55	35	20	47	0.6	4	79	399	0.25
GEEW35ES		55	35	20	47	0.6	4	79	399	0.253
GEF35ES		55	30	26	50	1.0	5	110	552	0.302
GEG35ES-2RS		62	35	22	53	0.6	16	99	495	0.408
GEG35ET-2RS		62	35	22	53	0.6	16	175	419	0.408
GEK35XS-2RS		80	54	38	70	1.0	17	226	1130	1.23
GE40ES-2RS		40	62	28	22	53	0.6	7	99	495
GE40ET-2RS	62		28	22	53	0.6	7	175	419	0.306
GE40ET/X	62		28	22	53	0.6	7	175	419	0.306
GEEM40ES-2RS	62		38	22	53	0.6	4	99	495	0.35
GEEW40ES	62		40	22	53	0.6	4	99	495	0.338
GEF40ES	62		33	28	55	1.0	6	130	654	0.375
GEG40ES-2RS	68		40	25	60	0.6	17	127	637	0.542
GEG40ET-2RS	68		40	25	60	0.6	17	225	540	0.542
GEK40XS-2RS	90		64	44	80	1.0	19	298	1490	1.83
GE45ES-2RS	45		68	32	25	60	0.6	7	127	637
GE45ET-2RS		68	32	25	60	0.6	7	225	540	0.427
GE45ET/X		68	32	25	60	0.6	7	225	540	0.427
GEEM45ES-2RS		68	40	25	60	0.6	4	127	637	0.49
GEEW45ES		68	45	25	60	0.6	4	127	637	0.481
GEF45ES		72	36	31	62	1.0	5	163	816	0.598
GEG45ES-2RS		75	43	28	66	0.6	15	156	780	0.713
GEG45ET-2RS		75	43	28	66	0.6	15	275	665	0.713
GEK45XS-2RS		100	72	52	90	1.0	17	398	1990	2.56

UBC

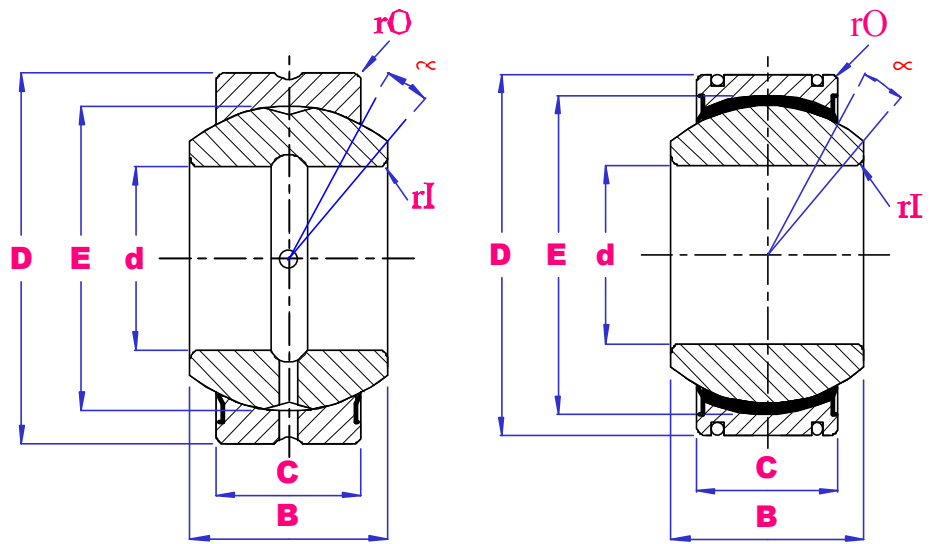
SPHERICAL
PLAIN
BEARINGS
50- 70MM ID



PART NO	d mm	D mm	B mm	C mm	E mm	r min	α deg	load		Wgt kg
								DkN	SkN	
GE50ES-2RS	50	75	35	28	66	0.6	6	156	780	0.546
GE50ET-2RS		75	35	28	66	0.6	6	275	665	0.546
GE50ET/X		75	35	28	66	0.6	6	275	665	0.546
GEEM50ES-2RS		75	43	28	66	0.6	4	156	780	0.60
GEEW50ES		75	50	28	66	0.6	4	156	780	0.558
GEF50ES		80	42	36	72	1.0	5	220	1100	0.869
GEG50ES-2RS		90	56	36	80	0.6	17	245	1220	1.14
GEG50ET-2RS		90	56	36	80	0.6	17	430	1030	1.14
GEK50XS-2RS		110	80	58	100	1.0	17	493	2450	3.43
GE55ES-2RS		55	85	40	32	74	1.0	7	200	1000
GE55ET-2RS	85		40	32	74	1.0	7	355	852	0.939
GE55ET/X	85		40	32	74	1.0	7	355	852	0.939
GEF55ES	92		47	40	80	1.0	6	272	1360	1.26
GEK55XS-2RS	125		90	64	110	1.0	19	598	2990	5.02
GE60ES-2RS	60	90	44	36	80	1.0	6	245	1220	1.04
GE60ET-2RS		90	44	36	80	1.0	6	430	1030	1.04
GE60ET/X		90	44	36	80	1.0	6	430	1030	1.04
GEEM60ES-2RS		90	54	36	80	1.0	3	245	1220	1.15
GEEW60ES		90	60	36	80	1.0	4	245	1220	1.15
GEF60ES		100	53	45	90	1.0	6	344	1720	1.72
GEG60ES-2RS		105	63	40	92	1.0	17	313	1560	2.05
GEG60ET-2RS		105	63	40	92	1.0	17	550	1320	2.05
GEK60XS-2RS		135	98	72	120	1.0	17	732	3660	6.93
GEEW63ES	63	95	63	36	83	1.0	4	253	1260	1.25
GEF65ES	65	105	55	47	94	1.0	5	375	1870	2.05
GE70ES-2RS	70	105	49	40	92	1.0	6	313	1560	1.55
GE70ET-2RS		105	49	40	92	1.0	6	550	1320	1.55
GE70ET/X		105	49	40	92	1.0	6	550	1320	1.55
GEEM70ES-2RS		105	65	40	92	1.0	4	313	1560	1.65
GEEW70ES		105	70	40	92	1.0	4	313	1560	1.71
GEF70ES		110	58	50	100	1.0	5	425	2125	2.23
GEG70ES-2RS		120	70	45	105	1.0	16	400	2000	3.01
GEG70ET-2RS		120	70	45	105	1.0	16	705	1700	3.01

UBC

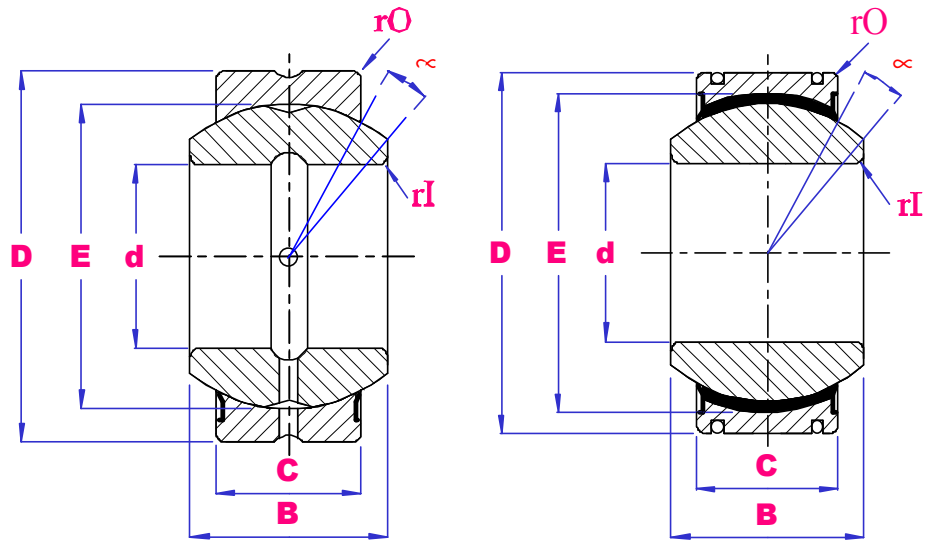
SPHERICAL PLAIN BEARINGS 75 - 100MM ID



PART NO	d mm	D mm	B mm	C mm	E mm	r min	α deg	load		Wgt kg
								DkN	SkN	
GEF75ES	75	120	64	55	110	1.0	5	510	2570	3.01
GE80ES-2RS	80	120	55	45	105	1.0	6	400	2000	2.31
GE80ET-2RS		120	55	45	105	1.0	6	705	1700	2.31
GE80ET/X		120	55	45	105	1.0	6	705	1700	2.31
GEEM80ES-2RS		120	74	45	105	1.0	4	400	2000	2.5
GEEW80ES		120	80	45	105	1.0	4	400	2000	2.39
GEF80ES		130	70	60	120	1.0	5	610	3060	3.98
GEG80ES-2RS		130	75	50	115	1.0	14	488	2440	3.64
GEG80ET-2RS		130	75	50	115	1.0	14	860	2070	3.64
GEF85ES		85	135	74	63	125	1.0	6	669	3340
GE90ES-2RS	90	130	60	50	115	1.0	5	488	2440	2.75
GE90ET-2RS		130	60	50	115	1.0	5	860	2070	2.75
GE90ET/X		130	60	50	115	1.0	5	860	2070	2.75
GEEM90ES-2RS		130	82	50	115	1.0	4	488	2440	3.28
GEEW90ES		130	90	50	115	1.0	4	488	2440	3.21
GEF90ES		140	76	65	130	1.0	5	718	3590	4.72
GEG90ES-2RS		150	85	55	130	1.0	15	607	3030	5.22
GEG90ET-2RS		150	85	55	130	1.0	15	1070	2570	5.22
GEF95ES		95	150	82	70	140	1.0	5	833	4165
GE100ES-2RS	100	150	70	55	130	1.0	7	607	3030	4.45
GE100ET-2RS		150	70	55	130	1.0	7	1070	2570	4.45
GE100ET/X		150	70	55	130	1.0	7	1070	2570	4.45
GEEM100ES-2RS		150	90	55	130	1.0	4	607	3030	4.82
GEEW100ES		150	100	55	130	1.0	4	607	3030	4.79
GEF100ES		160	88	75	150	1.5	5	956	4780	7.43
GEG100ES-2RS		160	85	55	140	1.0	14	654	3270	6.05
GEG100ET-2RS		160	85	55	140	1.0	14	1150	2770	6.05

UBC

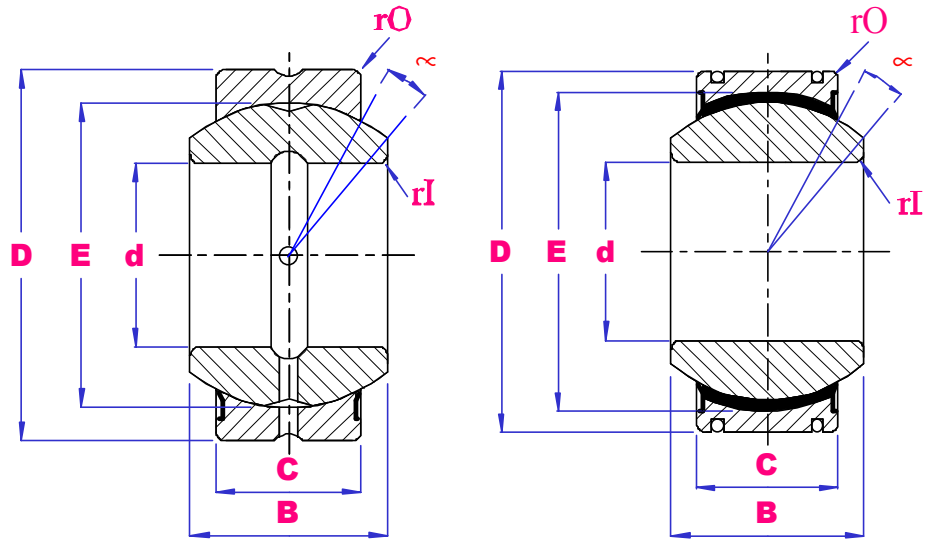
SPHERICAL
PLAIN
BEARINGS
110 - 180MM ID



PART NO	d mm	D mm	B mm	C mm	E mm	r min	α deg	load		Wgt kg
								DkN	SkN	
GE110ES-2RS	110	160	70	55	140	1.0	6	654	3270	4.82
GE110ET-2RS		160	70	55	140	1.0	6	1150	2770	4.82
GE110ET/X		160	70	55	140	1.0	6	1150	2770	4.82
GEEW110ES		160	110	55	140	1.0	4	654	3270	5.53
GEF110ES		170	93	80	160	1.5	5	1080	5440	8.54
GEG110ES-2RS		180	100	70	160	1.0	12	950	4750	9.68
GEG110ET-2RS		180	100	70	160	1.0	12	1680	4030	9.68
GEF115ES	115	180	98	85	165	1.5	5	1190	5960	10.3
GE120ES-2RS	120	180	85	70	160	1.0	6	950	4750	8.05
GE120XT-2RS		180	85	70	160	1.0	6	1680	4030	8.05
GE120XT/X		180	85	70	160	1.0	6	1680	4030	8.05
GEF120ES		190	105	90	175	1.5	6	1330	6690	12.4
GEG120ES-2RS		210	115	70	180	1.0	16	1070	5350	14.01
GEG120XT-2RS		210	115	70	180	1.0	16	1890	4530	14.01
GEEW125ES	125	180	125	70	160	1.0	4	950	4750	8.19
GEF130ES	130	200	110	95	185	1.5	5	1490	7460	13.8
GE140ES-2RS	140	210	90	70	180	1.0	7	1070	5350	11.03
GE140XT-2RS		210	90	70	180	1.0	7	1890	4530	11.03
GEG140ES-2RS		230	130	80	200	1.0	16	1360	6800	19.01
GEG140XT-2RS		230	130	80	200	1.0	16	2400	5760	19.01
GEF150ES	150	220	120	105	205	1.5	5	1820	9140	17.1
GE160ES-2RS	160	230	105	80	200	1.0	8	1360	6800	14.01
GE160XT-2RS		230	105	80	200	1.0	8	2400	5760	14.01
GEEW160ES		230	160	80	200	1.0	4	1360	6800	15.8
GEG160ES-2RS		260	135	80	225	1.0	16	1530	7650	24.70
GEG160XT-2RS		260	135	80	225	1.0	16	2700	6480	24.70
GE180ES-2RS	180	260	105	80	225	1.1	6	1530	7650	18.65
GE180XT-2RS		260	105	80	225	1.1	6	2700	6480	18.65
GEG180ES-2RS		290	155	100	250	1.0	14	2120	10600	35.90
GEG180XT-2RS		290	155	100	250	1.0	14	3750	9000	35.90

UBC

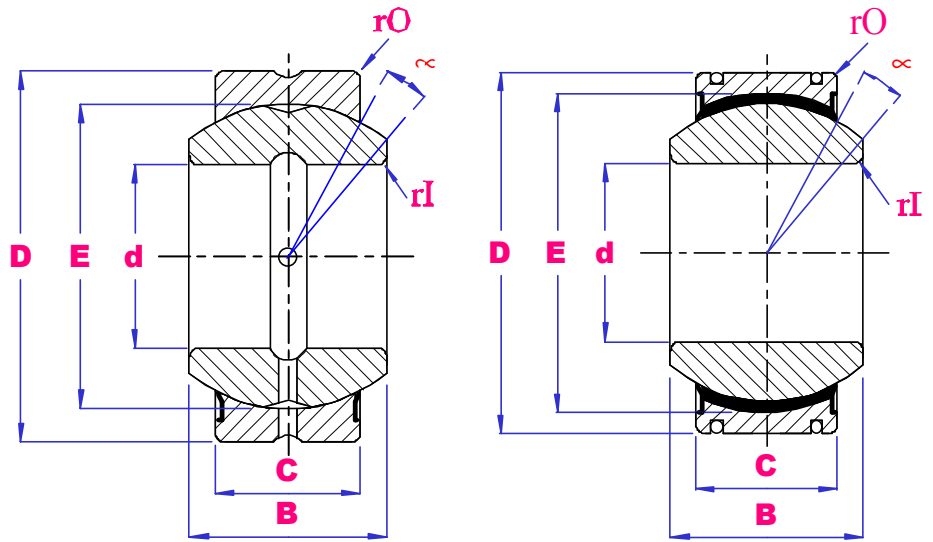
SPHERICAL
PLAIN
BEARINGS
200 - 320MM ID



PART NO	d mm	D mm	B mm	C mm	E mm	r min	α deg	load		Wgt kg
								DkN	SkN	
GE200ES-2RS	200	290	130	100	250	1.1	7	2120	10600	28.03
GE200XT-2RS		290	130	100	250	1.1	7	3750	9000	28.03
GEEW200ES		290	200	100	250	1.1	4	2120	10600	32.1
GEG200ES-2RS		320	165	100	275	1.1	15	2320	11600	45.28
GEG200XT-2RS		320	165	100	275	1.1	15	4120	9900	45.28
GE220ES-2RS	220	320	135	100	275	1.1	8	2320	11600	35.51
GE220XT-2RS		320	135	100	275	1.1	8	4120	9900	35.51
GEG220ES-2RS		340	175	100	300	1.1	16	2550	12700	51.12
GEG220XT-2RS		340	175	100	300	1.1	16	4500	10800	51.12
GE240ES-2RS	240	340	140	100	300	1.1	8	2550	12700	39.91
GE240XT-2RS		340	140	100	300	1.1	8	4500	10800	39.91
GEG240ES-2RS		370	190	110	325	1.1	15	3030	15190	65.12
GEG240XT-2RS		370	190	110	325	1.1	15	5360	12870	65.12
GEEW250ES	250	400	250	120	350	1.1	4	3750	17850	99.1
GE260ES-2RS	260	370	150	110	325	1.1	7	3030	15190	51.54
GE260XT-2RS		370	150	110	325	1.1	7	5360	12870	51.54
GEG260ES-2RS		400	205	120	350	1.1	15	3570	17850	82.44
GEG260XT-2RS		400	205	120	350	1.1	15	6300	15120	82.44
GE280ES-2RS	280	400	155	120	350	1.1	6	3570	17850	65.06
GE280XT-2RS		400	155	120	350	1.1	6	6300	15120	65.06
GEG280ES-2RS		430	210	120	375	1.1	15	3800	19100	97.21
GEG280XT-2RS		430	210	120	375	1.1	15	6750	16200	97.21
GE300ES-2RS	300	430	165	120	375	1.1	7	3800	19100	78.07
GE300XT-2RS		430	165	120	375	1.1	7	6750	13500	78.07
GEH300XT-2RS		430	212	200	390	1.1	2.0	11700	28080	118
GEH320XT-2RS	320	460	230	218	414	3.1	2.0	16240	32480	148
GEH320HC		460	230	218	414	3.1	2.0	9020	18040	148
GEEW320ES		520	320	160	450	1.1	4	6200	30500	225

UBC

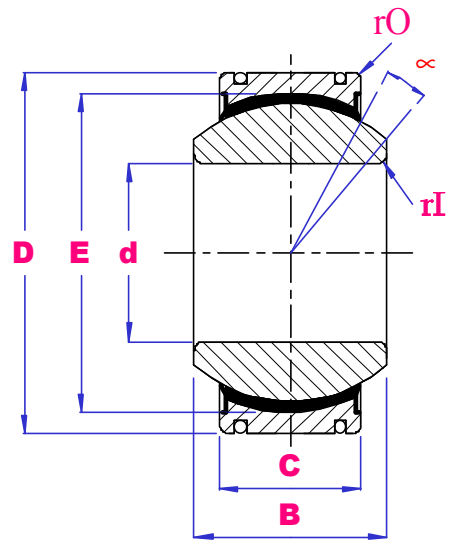
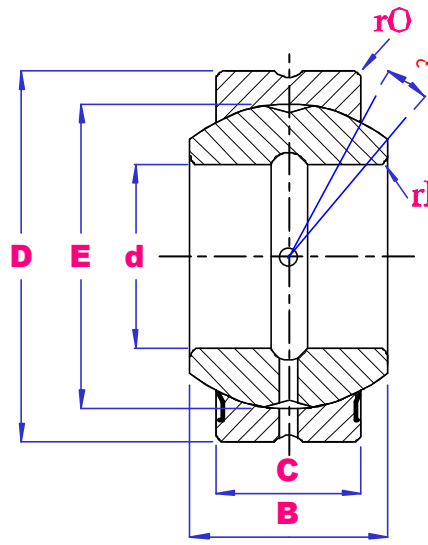
SPHERICAL PLAIN BEARINGS 3/16" - 3/4" ID



PART NO	d mm inch	D mm inch	B mm inch	C mm inch	E mm inch	r min	α deg	load		Wgt kg
								DkN	SkN	
GEFZ4S	4.83 0.1875	14.29	7.14	5.54	10.31	0.3	11	3	15	0.006
GEFZ4C		0.5625	0.281	0.218	0.406	0.012				
GEFZ6S	6.35 0.25	16.67	8.71	6.35	12.7	0.3	13.5	4.4	22	0.01
GEFZ6C		0.6562	0.343	0.25	0.5	0.012				
GEFZ7S	7.94 0.3125	19.05	9.53	7.14	14.27	0.6	12	6	28	0.014
GEFZ7C		0.75	0.375	0.281	0.562	0.024				
GEFZ9S	9.53 0.375	20.64	10.31	7.92	16.66	0.6	10	7.4	37	0.017
GEFZ9C		0.8125	0.406	0.312	0.656	0.024				
GEFZ11S	11.11 0.4375	23.02	11.11	8.71	17.45	0.6	8	8.4	42	0.021
GEFZ11C		0.9062	0.437	0.343	0.687	0.024				
GEZ12ES	12.7 0.50	22.225	11.10	9.525	18	0.15	6	13	41	0.022
GEFZ12S		0.875	0.437	0.375	0.707	0.006				
GEFZ12C	12.7 0.50	25.4	12.7	9.91	20.65	0.8	9.5	12	58	0.029
GEZ15ES		1.0	0.50	0.39	0.813	0.032				
GEFZ15S	15.875 0.625	25.4	12.7	9.91	20.65	0.8	9.5	18.4	46.0	0.029
GEFZ15C		1.0	0.50	0.39	0.813	0.032				
GEZ19ES-2RS	19.05 0.75	26.988	13.894	11.913	23	0.15	6	22	65	0.036
GEZ19ET-2RS		1.0625	0.547	0.469	0.904	0.006				
GEFZ19S	19.05 0.75	30.16	15.875	12.70	25.40	0.8	9.5	19	94	0.050
GEFZ19C		1.1875	0.625	0.50	1.0	0.032				
GEZ19ES-2RS	19.05 0.75	30.16	15.875	12.70	25.40	0.8	9.5	29.0	72.5	0.050
GEZ19ET-2RS		1.1875	0.625	0.50	1.0	0.032				
GEFZ19S	19.05 0.75	31.75	16.662	14.275	27.5	0.3	6	31	95	0.053
GEFZ19C		1.25	0.656	0.562	1.081	0.012				
GEFZ19S	19.05 0.75	31.75	16.662	14.275	27.5	0.3	6	50	100	0.053
GEFZ19C		1.25	0.656	0.562	1.081	0.012				
GEFZ19S	19.05 0.75	36.51	19.05	15.06	30.15	1.12	9	28	141	0.093
GEFZ19C		1.4375	0.75	0.593	1.187	0.044				
GEFZ19S	19.05 0.75	36.51	19.05	15.06	30.15	1.12	9	40.8	102.1	0.093
GEFZ19C		1.4375	0.75	0.593	1.187	0.044				

UBC

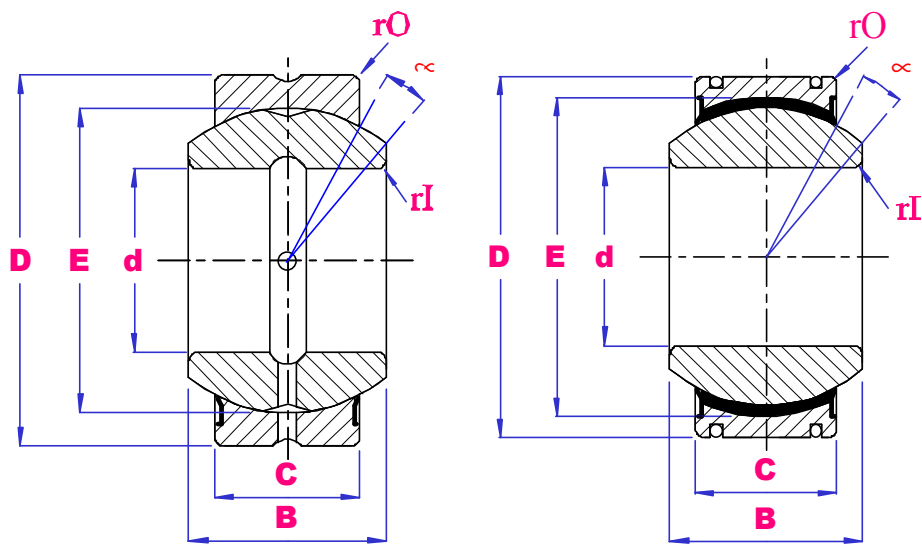
SPHERICAL
PLAIN
BEARINGS
7/8" - 1.3/4" ID



PART NO	d mm inch	D mm inch	B mm inch	C mm inch	E mm inch	r min	α deg	load		Wgt kg
								DkN	SkN	
GEZ22ES-2RS	22.225 0.875	36.513	19.431	16.662	32	0.3	6	42	127	0.085
		1.4375	0.756	0.656	1.258	0.012				
GEZ22ET-2RS		36.513	19.431	16.662	32	0.3	6	69	160	0.085
		1.4375	0.756	0.656	1.258	0.012				
GEFZ22S		39.69	22.23	17.86	33.32	1.12	9.5	37	186	0.119
		1.5625	0.703	0.875	1.312	0.044				
GEFZ22C	39.69	22.23	17.86	33.32	1.12	9.5	53.5	133.8	0.119	
	1.5625	0.703	0.875	1.312	0.044					
GEZ25ES-2RS	25.4 1.00	41.275	22.225	19.05	36.5	0.3	6	56	166	0.121
		1.625	0.875	0.75	1.4375	0.012				
GEZ25ET-2RS		41.275	22.225	19.05	36.5	0.3	6	104	250	0.121
		1.625	0.875	0.75	1.4375	0.012				
GEFZ25S		44.45	25.40	20.24	38.10	1.12	10	49	245	0.175
		1.75	1.0	0.797	1.50	0.044				
GEFZ25C	44.45	25.40	20.24	38.10	1.12	10	69.4	173.5	0.175	
	1.75	1.0	0.797	1.50	0.044					
GEZ31ES-2RS	31.75 1.25	50.8	27.762	23.8	45.5	0.6	6	86	260	0.23
		2	1.093	0.937	1.788	0.024				
GEZ31ET-2RS		50.8	27.762	23.8	45.5	0.6	6	160	390	0.23
		2	1.093	0.937	1.788	0.024				
GEGZ31ES-2RS		61.913	35.306	28.575	54.7	0.6	15	125	375	0.454
		2.4375	1.39	1.125	2.154	0.24				
GEGZ31ET-2RS	61.913	35.306	28.575	54.7	0.6	15	235	560	0.454	
	2.4375	1.39	1.125	2.154	0.24					
GEZ34ES-2RS	34.925 1.375	55.563	30.15	26.187	49	0.6	6	102	310	0.35
		2.1875	1.187	1.031	1.926	0.024				
GEZ34ET-2RS		55.563	30.15	26.187	49	0.6				
	2.1875	1.187	1.031	1.926	0.024					
GEZ38ES-2RS	38.10 1.50	61.913	33.325	28.575	54.7	0.6	6	125	375	0.42
		2.4375	1.312	1.125	2.154	0.24				
GEZ38ET-2RS		61.913	33.325	28.575	54.7	0.6				
		2.4375	1.312	1.125	2.154	0.24				
GEGZ38ES-2RS		71.438	40.132	33.325	63.9	0.6	14	170	510	0.726
		2.8125	1.58	1.312	2.515	0.24				
GEGZ38ET-2RS	71.438	40.132	33.325	63.9	0.6	14				
	2.8125	1.58	1.312	2.515	0.24					
GEZ44ES-2RS	44.45 1.75	71.438	38.887	33.325	63.9		0.6	6	170	510
		2.8125	1.531	1.312	2.511	0.24				
GEZ44ET-2RS		71.438	38.887	33.325	63.9	0.6	6			
		2.8125	1.531	1.312	2.511	0.24				
GEGZ44ES-2RS		80.963	46.228	38.1	73	0.6		14	224	670
		3.1875	1.82	1.5	2.875	0.24				
GEGZ44ET-2RS	80.963	46.228	38.1	73	0.6	14	415			
	3.1875	1.82	1.5	2.875	0.24					

UBC

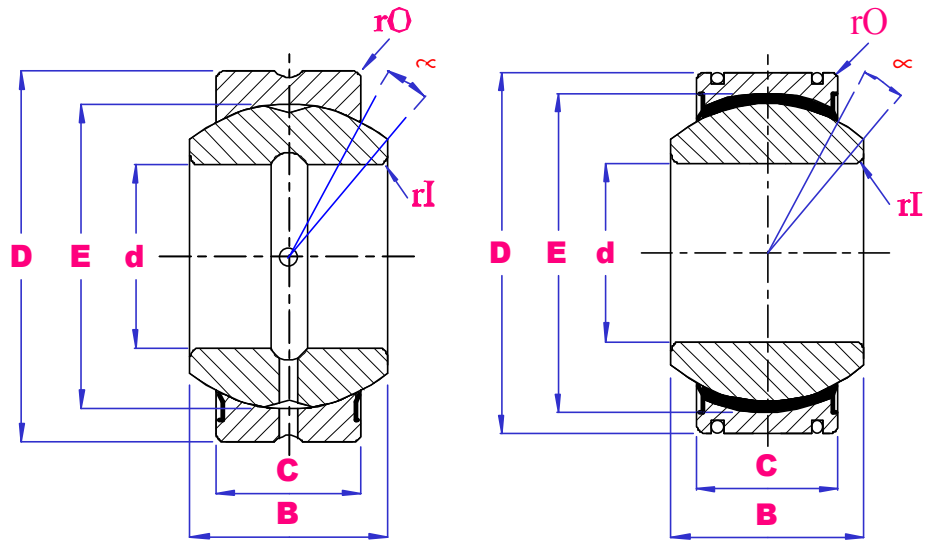
SPHERICAL PLAIN BEARINGS 2" – 3.1/4" ID



PART NO	d mm inch	D mm inch	B mm inch	C mm inch	E mm inch	r min	α deg	load		Wgt kg
								DkN	SkN	
GEZ50ES-2RS	50.80 2.00	80.963	44.45	38.1	73	0.6	6	224	670	0.93
		3.1875	1.75	1.5	2.869	0.24				
GEZ50ET-2RS		80.963	44.45	38.1	73	0.6	6	415	1000	0.93
		3.1875	1.75	1.5	2.869	0.24				
GEGZ50ES-2RS		90.488	52.578	42.85	82	0.6	14	280	850	1.68
		3.5625	2.07	1.687	3.235	0.24				
GEGZ50ET-2RS	90.488	52.578	42.85	82	0.6	14	525	1260	1.68	
	3.5625	2.07	1.687	3.235	0.24					
GEZ57ES-2RS	57.15 2.25	90.488	50.013	42.85	82	0.6	6	280	850	1.30
		3.5625	1.969	1.687	3.223	0.24				
GEZ57ET-2RS		90.488	50.013	42.85	82	0.6	6	525	1260	1.30
		3.5625	1.969	1.687	3.223	0.24				
GEGZ57ES-2RS		100.013	58.877	47.625	92	1.0	14	355	1060	2.01
		3.9375	2.318	1.875	3.59	0.04				
GEGZ57ET-2RS	100.013	58.877	47.625	92	1.0	14	655	1570	2.01	
	3.9375	2.318	1.875	3.59	0.04					
GEZ63ES-2RS	63.50 2.50	100.013	55.55	47.625	92	1.0	6	355	1060	1.85
		3.9375	2.187	1.875	3.616	0.04				
GEZ63ET-2RS		100.013	55.55	47.625	92	1.0	6	655	1570	1.85
		3.9375	2.187	1.875	3.616	0.04				
GEGZ63ES-2RS		111.125	64.643	52.375	100	1.0	14	415	1250	2.95
		4.375	2.545	2.062	3.937	0.04				
GEGZ63ET-2RS	111.125	64.643	52.375	100	1.0	14	785	1880	2.95	
	4.375	2.545	2.062	3.937	0.04					
GEZ69ES-2RS	69.85 2.75	111.125	61.112	52.375	100	1.0	6	415	1250	2.4
		4.375	2.406	2.062	3.937	0.04				
GEZ69ET-2RS		111.125	61.112	52.375	100	1.0	6	785	1880	2.4
		4.375	2.406	2.062	3.937	0.04				
GEGZ69ES-2RS		120.65	70.866	57.15	109.5	1.0	14	500	1500	3.63
		4.75	2.79	2.25	4.312	0.4				
GEGZ69ET-2RS	120.65	70.866	57.15	109.5	1.0	14	935	2250	3.63	
	4.75	2.79	2.25	4.312	0.4					
GEZ76ES-2RS	76.20 3.00	120.65	66.675	57.15	109.5	1.0	6	500	1500	3.1
		4.75	2.625	2.25	4.303	0.4				
GEZ76ET-2RS		120.65	66.675	57.15	109.5	1.0	6	935	2250	3.1
		4.75	2.625	2.25	4.303	0.4				
GEGZ76ES-2RS		130.175	76.759	61.9	119	1.0	14	585	1760	4.36
		5.125	3.022	2.437	4.685	0.04				
GEGZ76ET-2RS	130.175	76.759	61.9	119	1.0	14	1100	2650	4.36	
	5.125	3.022	2.437	4.685	0.04					
GEZ82ES-2RS	82.55 3.25	130.175	72.238	61.9	119	1.0	6	585	1760	3.8
		5.125	2.844	2.437	4.685	0.04				
GEZ82ET-2RS		130.175	72.238	61.9	119	1.0	6	1100	2650	3.8
		5.125	2.844	2.437	4.685	0.04				
GEGZ82ES-2RS		139.7	82.931	66.675	128	1.0	14	680	2040	5.31
		5.5	3.265	2.625	5.04	0.04				
GEGZ82ET-2RS	139.7	82.931	66.675	128	1.0	14	1280	3070	5.31	
	5.5	3.265	2.625	5.04	0.04					

UBC

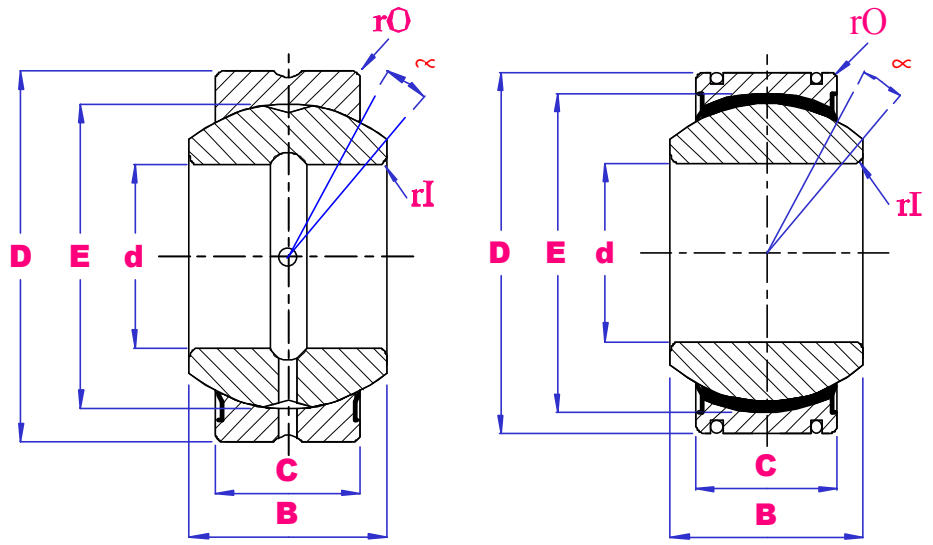
SPHERICAL
PLAIN
BEARINGS
3.1/2" – 4.1/2" ID



PART NO	d mm inch	D mm inch	B mm inch	C mm inch	E mm inch	r min	α deg	load		Wgt kg
								DkN	SkN	
GEZ88ES-2RS	88.90	139.7	77.775	66.675	128	1.0	6	680	2040	4.8
		5.5	3.062	2.625	5.04	0.04				
GEZ88ET-2RS	3.50	139.7	77.775	66.675	128	1.0	6	1280	3070	4.8
		5.5	3.062	2.625	5.04	0.04				
GEGZ88ES-2RS	3.50	149.225	90.424	71.425	137	1.0	14	780	2360	6.81
		5.875	3.56	2.812	5.393	0.04				
GEGZ88ET-2RS	3.50	149.225	90.424	71.425	137	1.0	14	1460	3520	6.81
		5.875	3.56	2.812	5.393	0.04				
GEZ95ES-2RS	95.25	149.225	83.337	71.425	137	1.0	6	780	2360	5.8
		5.875	3.281	2.812	5.393	0.04				
GEZ95ET-2RS	3.75	149.225	83.337	71.425	137	1.0	6	1460	3520	5.8
		5.875	3.281	2.812	5.393	0.04				
GEGZ95ES-2RS	3.75	158.75	94.945	76.20	146	1.0	14	900	2650	8.85
		6.25	3.738	3.0	5.748	0.04				
GEGZ95ET-2RS	3.75	158.75	94.945	76.20	146	1.0	14	1660	4000	8.85
		6.25	3.738	3.0	5.748	0.04				
GEZ101ES-2RS	101.60	158.75	88.90	76.20	146	1.0	6	900	2650	7.0
		6.25	3.50	3.0	5.748	0.04				
GEZ101ET-2RS	4.00	158.75	88.90	76.20	146	1.0	6	1660	4000	7.0
		6.25	3.50	3.0	5.748	0.04				
GEGZ101ES-2RS	4.00	177.80	107.315	85.725	164.5	1.0	10	1120	3400	10.2
		7.0	4.225	3.375	6.476	0.04				
GEGZ101ET-2RS	4.00	177.80	107.315	85.725	164.5	1.0	10	2110	5070	10.2
		7.0	4.225	3.375	6.476	0.04				
GEZ107ES-2RS	107.95	168.275	94.463	80.95	155	1.0	6	1000	3000	8.41
		6.625	3.719	3.187	6.102	0.04				
GEZ107ET-2RS	4.25	168.275	94.463	80.95	155	1.0	6	1880	4510	8.41
		6.625	3.719	3.187	6.102	0.04				
GEZ114ES-2RS	114.30	177.80	100.013	85.725	164.5	1.0	6	1120	3400	9.8
		7.0	3.937	3.375	6.476	0.04				
GEZ114ET-2RS	4.50	177.80	100.013	85.725	164.5	1.0	6	2110	5070	9.8
		7.0	3.937	3.375	6.476	0.04				
GEGZ114ES-2RS	4.50	196.85	119.126	95.25	183	1.0	10	1400	4150	13.6
		7.75	4.69	3.75	7.204	0.4				
GEGZ114ET-2RS	4.50	196.85	119.126	95.25	183	1.0	10	2610	6270	13.6
		7.75	4.69	3.75	7.204	0.4				
GEZ120ES-2RS	120.65	187.325	105.562	90.475	173.5	1.0	6	1250	3750	11.5
		7.375	41.56	3.562	6.83	0.04				
GEZ120ET-2RS	4.75	187.325	105.562	90.475	173.5	1.0	6	2350	5650	11.5
		7.375	41.56	3.562	6.83	0.04				

UBC

SPHERICAL PLAIN BEARINGS 4.3/4" – 12" ID

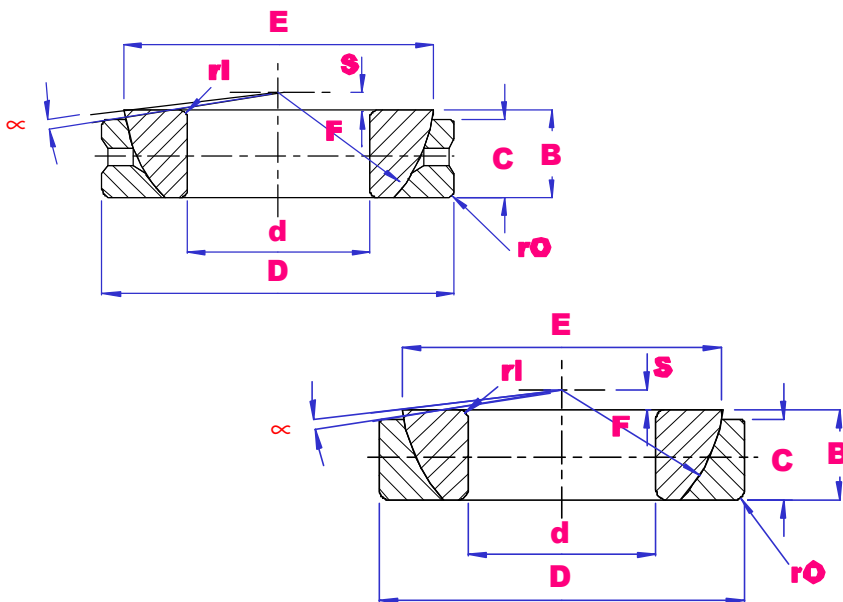


PART NO	d mm inch	D mm inch	B mm inch	C mm inch	E mm inch	r mi n	α deg	load		Wgt kg
								DkN	SkN	
GEZ127ES-2RS	127.00 5.00	196.85 7.75	111.125 4.375	95.25 3.75	183 7.204	1.0 0.4	6	1400	4150	13.5
GEZ127ET-2RS		196.85 7.75	111.125 4.375	95.25 3.75	183 7.204	1.0 0.4				
GEGZ139ES-2RS	139.7 5.50	222.25 8.75	125.73 4.95	104.775 4.125	207 8.156	1.0 0.04	9	1730	5200	20.4
GEGZ139ET-2RS		222.25 8.75	125.73 4.95	104.775 4.125	207 8.156	1.0 0.04				
GEZ152ES-2RS	152.4 6.00	222.25 8.75	120.65 4.75	104.775 4.125	207 8.15	1.0 0.04	5	1730	5200	17.5
GEZ152ET-2RS		222.25 8.75	120.65 4.75	104.775 4.125	207 8.15	1.0 0.04				
GEZ165ES-2RS	165.1 6.50	247.65 9.75	123.825 4.875	103.175 4.062	223 8.78	1.1 0.043	7	1830	5500	22.9
GEZ177ES-2RS		266.7 10.50	133.35 5.25	111.125 4.375	240 9.449	1.1 0.043				
GEZ190ES-2RS	190.5 7.50	285.75 11.25	142.875 5.625	119.05 4.687	257 10.118	1.1 0.043	7	2440	7340	35.1
GEZ203ES-2RS		304.8 12.00	152.4 6.00	127.0 5.00	275 10.827	1.1 0.043				
GEZ215ES-2RS	215.9 8.50	323.85 12.75	161.925 6.375	134.925 5.312	292 11.496	1.1 0.043	7	3130	9420	51.1
GEZ228ES-2RS		342.9 13.50	171.45 6.75	142.875 5.625	309 12.165	1.1 0.043				
GEZ241ES-2RS	241.3 9.50	361.95 14.25	180.975 7.125	150.8 5.937	326 12.835	1.1 0.043	7	3910	11700	71.4
GEZ254ES-2RS		381 15.00	190.5 7.50	158.75 6.25	343 13.504	1.1 0.043				
GEZ266ES-2RS	266.7 10.50	400.05 15.75	200.025 7.875	166.675 6.562	360 14.173	1.1 0.043	7	4780	14300	96.4
GEZ279ES-2RS		419.1 16.5	209.55 8.25	174.625 6.875	377 14.843	1.1 0.043				
GEZ292ES-2RS	292.1 11.50	438.15 17.25	219.075 8.625	182.55 7.187	395 15.551	1.1 0.043	7	5740	17200	126.7
GEZ304ES-2RS		457.2 18.00	228.6 9.00	190.5 7.50	412 16.22	1.1 0.043				

UBC

SPHERICAL PLAIN ANGULARCONTACT BEARINGS

25 - 100MM ID

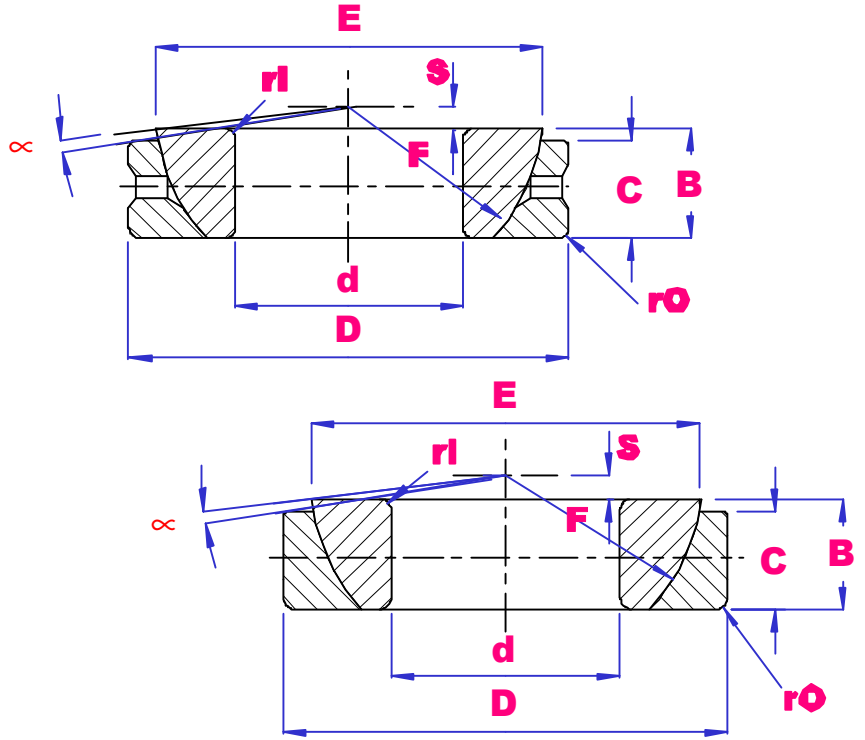


PART NO	d	D	B	C	E	F	G	H	r min	α deg	LOAD		Wgt kg
											DkN	SkN	
GAC25S	25	47	15	14	15	42	0.6	7.5	1.0	2.5	50	250	0.148
GAC25T	25	47	15	14	15	42	0.6	-	1.0	2.5	89	225	0.148
GAC28S	28	52	15	15	16	47	1.0	8.0	1.0	2.0	60	300	0.186
GAC28T	28	52	15	15	16	47	1.0	-	1.0	2.0	100	270	0.186
GAC30S	30	55	17	15	17	49.5	1.3	8.5	1.0	4.5	63	315	0.208
GAC30T	30	55	17	15	17	49.5	1.3	-	1.0	4.5	110	285	0.208
GAC32S	32	58	17	16	17	52	2.0	8.5	1.0	2.0	71	354	0.241
GAC32T	32	58	17	16	17	52	2.0	-	1.0	2.0	125	320	0.241
GAC35S	35	62	18	16	18	55.5	2.1	9.0	1.0	4.0	78	390	0.268
GAC35T	35	62	18	16	18	55.5	2.1	-	1.0	4.0	135	340	0.268
GAC40S	40	68	19	17	19	62	2.8	9.5	1.0	2.5	92	463	0.327
GAC40T	40	68	19	17	19	62	2.8	-	1.0	2.5	160	400	0.327
GAC45S	45	75	20	18	20	68.5	3.5	10.0	1.0	3.0	108	540	0.416
GAC45T	45	75	20	18	20	68.5	3.5	-	1.0	3.0	190	470	0.416
GAC50S	50	80	20	19	20	74	4.23	10.0	1.0	1.5	123	618	0.455
GAC50T	50	80	20	19	20	74	4.23	-	1.0	1.5	215	540	0.455
GAC55S	55	90	23	20	23	82	5.0	11.5	1.1	4.0	144	721	0.645
GAC55T	55	90	23	20	23	82	5.0	-	1.1	4.0	250	630	0.645
GAC60S	60	95	23	21	23	88.5	5.7	11.5	1.1	2.5	163	817	0.714
GAC60T	60	95	23	21	23	88.5	5.7	-	1.1	2.5	285	710	0.714
GAC65S	65	100	23	22	23	93.5	6.5	11.5	1.1	1.0	180	905	0.759
GAC65T	65	100	23	22	23	93.5	6.5	-	1.1	1.0	315	790	0.759
GAC70S	70	110	25	23	25	102	7.2	12.5	1.1	2.0	206	1030	1.04
GAC70T	70	110	25	23	25	102	7.2	-	1.1	2.0	360	900	1.04
GAC75S	75	115	25	24	25	107	7.9	12.5	1.1	1.0	220	1129	1.12
GAC75T	75	115	25	24	25	107	7.9	-	1.1	1.0	395	980	1.12
GAC80S	80	125	29	25.5	29	115	8.6	14.5	1.1	3.5	258	1290	1.54
GAC80T	80	125	29	25.5	29	115	8.6	-	1.1	3.5	450	1120	1.54
GAC85S	85	130	29	26.5	29	122	9.4	14.5	1.1	2.0	284	1422	1.61
GAC85T	85	130	29	26.5	29	122	9.4	-	1.1	2.0	495	1240	1.61
GAC90S	90	140	32	28	32	128.5	10.1	16.0	1.5	3.5	316	1580	2.09
GAC90T	90	140	32	28	32	128.5	10.1	-	1.5	3.5	550	1380	2.09
GAC95S	95	145	32	29.5	32	135	10.8	16.0	1.5	2.0	350	1750	2.22
GAC95T	95	145	32	29.5	32	135	10.8	-	1.5	2.0	610	1530	2.22
GAC100S	100	150	32	31	32	141	11.6	16.0	1.5	0.5	384	1923	2.34
GAC100T	100	150	32	31	32	141	11.6	-	1.5	0.5	670	1680	2.34

UBC

SPHERICAL PLAIN ANGULAR CONTACT BEARINGS

105 - 200MM ID

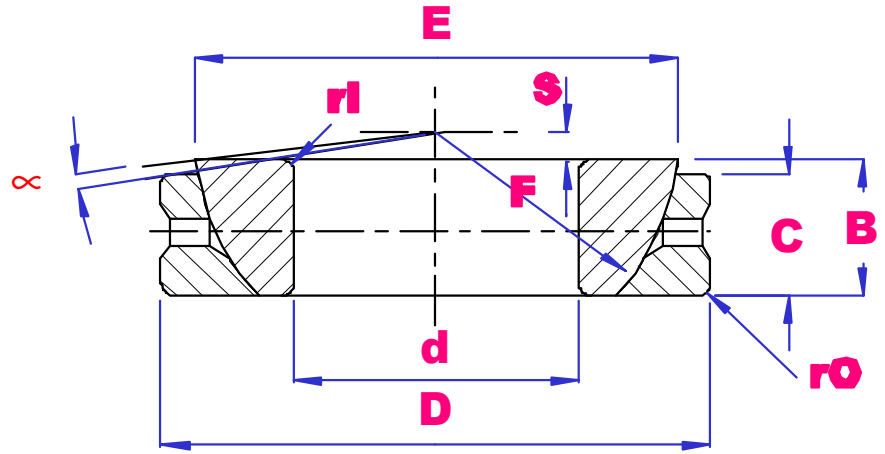


PART NO	d	D	B	C	E	F	G	H	r min	α deg	LOAD		Wgt kg
											DkN	SkN	
GAC105S	105	160	35	32.5	35	148	12.3	17.5	2.0	2.0	423	2116	2.93
GAC105T	105	160	35	32.5	35	148	12.3	-	2.0	2.0	740	1850	2.93
GAC110S	110	170	38	34	38	155	13.0	19.0	2.0	3.0	463	2318	3.68
GAC110T	110	170	38	34	38	155	13.0	-	2.0	3.0	810	2020	3.68
GAC120S	120	180	38	37	38	168	14.5	19.0	2.0	0.5	547	2735	3.97
GAC120T	120	180	38	37	38	168	14.5		2.0	0.5	955	2390	3.97
GAC130S	130	200	45	43	45	188	18.0	19.0	2.5	1.0	710	3550	5.92
GAC130T	130	200	45	43	45	188	18.0		2.5	1.0	1240	3110	5.92
GAC140S	140	210	45	43	45	198	19.0	19.0	2.5	1.0	740	3740	6.33
GAC140T	140	210	45	43	45	198	19.0		2.5	1.0	1310	3270	6.33
GAC150S	150	225	48	46	48	211	20.0	20.5	3.0	1.0	850	4370	8.01
GAC150T	150	225	48	46	48	211	20.0		3.0	1.0	1490	3730	8.01
GAC160S	160	240	51	49	51	225	20.0	22.0	3.0	1.0	970	4850	9.42
GAC160T	160	240	51	49	51	225	20.0		3.0	1.0	1690	4240	9.42
GAC170S	170	260	57	55	57	246	21.0	27.0	3.0	1.0	1190	5950	12.3
GAC170T	170	260	57	55	57	246	21.0		3.0	1.0	2080	5200	12.3
GAC180S	180	280	64	61	64	260	21.0	28.0	3.0	1.0	1395	6970	17.4
GAC180T	180	280	64	61	64	260	21.0		3.0	1.0	2440	6100	17.4
GAC190S	190	290	64	62	64	275	26.0	30.0	3.0	0.5	1500	7500	18.2
GAC190T	190	290	64	62	64	275	26.0		3.0	0.5	2620	6560	18.2
GAC200S	200	310	70	66	70	290	26.0	30.0	3.0	1.5	1680	8420	22.5
GAC200T	200	310	70	66	70	290	26.0		3.0	1.5	2940	7360	22.5

UBC

SPHERICAL PLAIN ANGULAR CONTACT BEARINGS

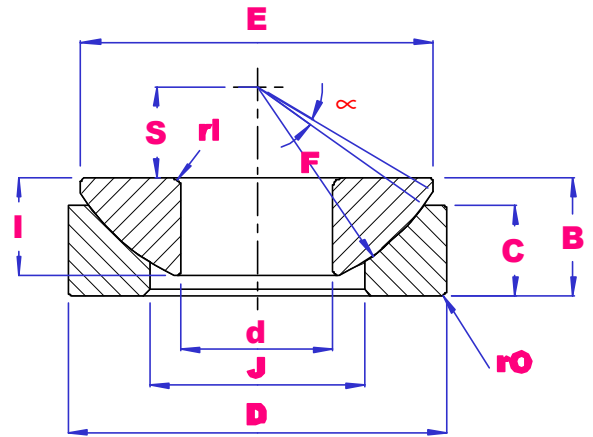
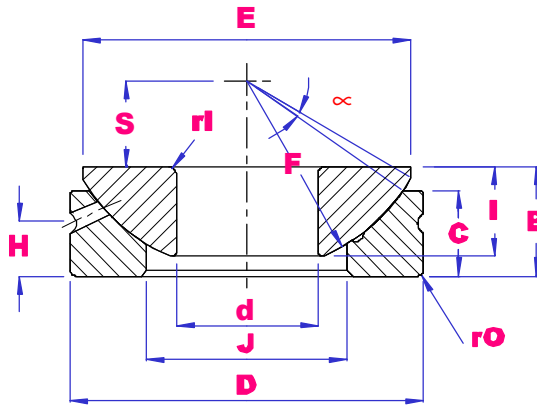
0.5" – 6" ID



PART NO	d mm inch	D mm inch	B mm inch	C mm inch	E mm inch	F mm inch	G mm inch	H mm inch	r mm	α deg	load		Wgt kg
											DkN	SkN	
GACZ12S	12.7	22.225	6.86	4.83	7.62	18.26	1.2	2.39	0.5	7	6	18	0.013
	0.50	0.875	0.27	0.19	0.3	0.719	0.051	0.094	0.02				
GACZ15S	15.875	26.988	8.64	6.35	9.40	22.83	1.48	2.77	0.76	6	10	31	0.025
	0.625	1.0625	0.34	0.25	0.37	0.899	0.058	0.109	0.03				
GACZ19S	19.05	31.75	10.41	7.87	11.17	27.43	1.79	3.18	1.0	6	16	47	0.038
	0.75	1.25	0.41	0.31	0.44	1.08	0.07	0.125	0.04				
GACZ22S	22.225	36.512	12.19	9.65	13.21	31.95	2.02	4.37	2.0	5.5	22	66	0.049
	0.875	1.4375	0.48	0.38	0.52	1.258	0.08	0.172	0.08				
GACZ25S	25.4	41.275	13.97	11.18	15.24	36.50	2.54	5.16	2.0	6	29	87	0.085
	1.0	1.625	0.55	0.44	0.6	1.437	0.1	0.203	0.08				
GACZ31S	31.75	50.8	17.78	13.97	18.80	45.59	3.36	5.94	2.0	6	47	142	0.159
	1.25	2.0	0.7	0.55	0.74	1.795	0.132	0.234	0.08				
GACZ34S	34.925	55.562	19.56	15.24	21.34	49.20	3.69	7.14	2.54	4	53	159	0.213
	1.375	2.1875	0.77	0.6	0.84	1.937	0.145	0.281	0.1				
GACZ38S	38.1	61.912	21.34	16.76	23.11	54.74	3.93	7.92	2.54	5.5	66	197	0.301
	1.50	2.4375	0.84	0.66	0.91	2.155	0.155	0.312	0.1				
GACZ44S	44.45	71.438	24.89	20.07	27.18	63.88	4.72	8.33	2.54	6	91	273	0.458
	1.75	2.8125	0.98	0.79	1.07	2.515	0.186	0.328	0.1				
GACZ50S	50.8	80.962	28.70	23.37	31.24	73.02	5.51	9.52	3.56	5.5	122	365	0.671
	2.0	3.1875	1.13	0.92	1.23	2.875	0.217	0.375	0.14				
GACZ57S	57.15	90.488	32.26	26.67	35.31	82.17	6.18	11.51	3.56	5.5	155	466	0.948
	2.25	3.5625	1.27	1.05	1.39	3.235	0.243	0.453	0.14				
GACZ63S	63.5	100.013	36.07	29.97	39.12	91.19	6.79	12.70	3.56	5	196	589	1.13
	2.50	3.9375	1.42	1.18	1.54	3.59	0.267	0.50	0.14				
GACZ69S	69.85	111.125	39.62	32.38	43.18	100.33	7.46	13.08	4.6	5	231	694	1.75
	2.75	4.375	1.56	1.275	1.7	3.95	0.294	0.515	0.18				
GACZ76S	76.2	120.65	43.43	35.69	47.24	109.52	8.17	14.68	4.6	5	279	838	2.28
	3.0	4.75	1.71	1.405	1.86	4.312	0.322	0.578	0.18				
GACZ82S	82.55	130.175	47.24	39.24	51.56	118.74	9.04	16.66	4.6	5	332	995	2.89
	3.25	5.125	1.86	1.545	2.03	4.675	0.356	0.656	0.18				
GACZ88S	88.9	139.7	50.8	42.54	55.37	128.02	9.51	17.86	4.6	5	389	1167	3.57
	3.50	5.50	2.0	1.675	2.18	5.04	0.374	0.703	0.18				
GACZ95S	95.25	149.225	54.61	45.85	59.44	136.91	10.1	19.43	4.6	4.5	449	1348	4.35
	3.75	5.875	2.15	1.805	2.34	5.39	0.398	0.765	0.18				
GACZ101S	101.6	158.75	58.42	49.15	63.50	146.05	10.4	19.84	4.6	4.5	515	1545	5.26
	4.0	6.25	2.30	1.935	2.50	5.75	0.409	0.781	0.18				
GACZ114S	114.30	177.80	65.79	55.75	71.12	164.46	12.40	22.22	4.6	4.5	663	1990	7.76
	4.50	7.0	2.59	2.195	2.80	6.475	0.488	0.875	0.18				
GACZ127S	127.0	196.85	73.15	62.36	79.50	182.63	13.90	25.40	4.6	4.5	818	2455	11.07
	5.0	7.75	2.88	2.455	3.13	7.19	0.547	1.0	0.18				
GACZ152S	152.4	222.25	78.74	66.42	85.72	207.16	16.10	34.80	4.6	4.5	985	2955	17.37
	6.0	8.75	3.10	2.615	3.375	8.156	0.634	1.37	0.18				

UBC

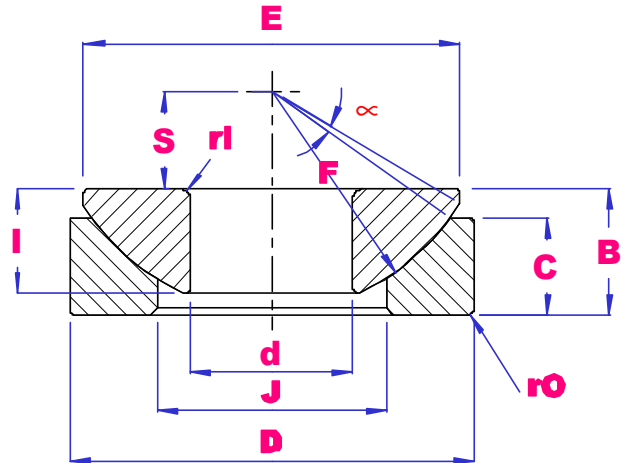
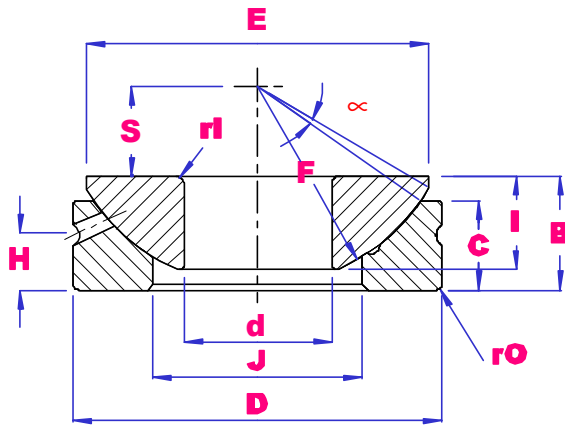
SPHERICAL PLAIN THRUST BEARINGS 10 - 80MM ID



PART NO	d	D	I	C	B	F	S	E	J	H	r _{min}	α deg	LOAD		Wgt kg
													DkN	SkN	
GX10S	10	30	7.5	7.0	9.5	32	7.0	27.5	15.5	3.0	0.6	5.0	27	136	0.036
GX10T	10	30	7.5	7.0	9.5	32	7.0	27.5	15.5	-	0.6	5.0	45	120	0.036
GX12S	12	35	9.5	9.3	13.0	38	8.0	32.0	18.0	4.0	0.6	5.0	37	188	0.072
GX12T	12	35	9.5	9.3	13.0	38	8.0	32.0	18.0	-	0.6	5.0	65	165	0.072
GX15S	15	42	11.0	10.8	15.0	46	10.0	39.0	22.5	5.0	0.6	6.0	53	267	0.108
GX15T	15	42	11.0	10.8	15.0	46	10.0	39.0	22.5	-	0.6	6.0	95	235	0.108
GX17S	17	47	11.8	11.2	16.0	52	11.0	43.5	27.0	5.0	0.6	4.0	61	311	0.137
GX17T	17	47	11.8	11.2	16.0	52	11.0	43.5	27.0	-	0.6	4.0	110	275	0.137
GX20S	20	55	14.5	13.8	20.0	60	12.5	50.0	31.0	6.0	1.0	5.0	84	425	0.246
GX20T	20	55	14.5	13.8	20.0	60	12.5	50.0	31.0	-	1.0	5.0	150	380	0.246
GX25S	25	62	16.5	16.7	22.5	68	14.0	58.5	34.5	6.0	1.0	5.0	134	672	0.415
GX25T	25	62	16.5	16.7	22.5	68	14.0	58.5	34.5	-	1.0	5.0	245	600	0.415
GX30S	30	75	19.0	19.0	26.0	82	17.5	70.0	42.0	8.0	1.0	5.0	182	909	0.614
GX30T	30	75	19.0	19.0	26.0	82	17.5	70.0	42.0	-	1.0	5.0	335	820	0.614
GX35S	35	90	22.0	20.7	28.0	98	22.0	84.0	50.5	8.0	1.0	5.0	266	1330	0.973
GX35T	35	90	22.0	20.7	28.0	98	22.0	84.0	50.5	-	1.0	5.0	490	1200	0.973
GX40S	40	105	27.0	21.5	32.0	114	24.5	97.0	59.0	9.0	1.0	6.0	357	1810	1.59
GX40T	40	105	27.0	21.5	32.0	114	24.5	97.0	59.0	-	1.0	6.0	675	1640	1.59
GX45S	45	120	31.0	25.5	36.5	128	27.5	110	67.0	11.0	1.0	6.0	486	2470	2.24
GX45T	45	120	31.0	25.5	36.5	128	27.5	110	67.0	-	1.0	6.0	915	2240	2.24
GX50S	50	130	33.0	30.5	42.5	139	30.0	120	70.0	10.0	1.0	6.0	554	2810	3.14
GX50T	50	130	33.0	30.5	42.5	139	30.0	120	70.0	-	1.0	6.0	1040	2550	3.14
GX60S	60	150	37.0	34.0	45.0	160	35.0	140	84.0	12.5	1.0	6.0	748	3820	4.63
GX60T	60	150	37.0	34.0	45.0	160	35.0	140	84.0	-	1.0	6.0	1400	3470	4.63
GX70S	70	160	42.0	36.5	50.0	176	35.0	153	94.5	13.5	1.0	3.0	902	4610	5.37
GX70T	70	160	42.0	36.5	50.0	176	35.0	153	94.5	-	1.0	3.0	1590	4180	5.37
GX80S	80	180	43.5	38.0	50.0	197	42.5	172	107.5	14.5	1.0	4.0	1110	5700	6.91
GX80T	80	180	43.5	38.0	50.0	197	42.5	172	107.5	-	1.0	4.0	1960	5180	6.91

UBC

SPHERICAL PLAIN THRUST BEARINGS 100 - 200MM ID



PART NO	d	D	I	C	B	F	S	E	J	H	r min	α deg	LOAD		Wgt kg
													DkN	SkN	
GX100S	100	210	51.0	46.0	59.0	222	45.0	198	127	15.0	1.1	4.0	1300	6470	10.9
GX100T	100	210	51.0	46.0	59.0	222	45.0	198	127	-	1.1	4.0	2230	5940	10.9
GX120S	120	230	53.5	50.0	64.0	250	52.5	220	145	16.5	1.1	3.0	1530	7580	13.9
GX120T	120	230	53.5	50.0	64.0	250	52.5	220	145	-	1.1	3.0	2610	6960	13.9
GX140S	140	260	61.0	54.0	72.0	274	52.5	243	177	23.0	1.1	3.0	1820	9040	18.1
GX140T	140	260	61.0	54.0	72.0	274	52.5	243	177	-	1.1	3.0	3120	8300	18.1
GX160S	160	290	66.0	58.0	77.0	313	65.0	271	200	23.0	1.1	2.0	2100	10440	23.2
GX160T	160	290	66.0	58.0	77.0	313	65.0	271	200	-	1.1	2.0	3380	9560	23.2
GX180S	180	320	74.0	62.0	86.0	340	67.5	299	225	26.0	1.1	4.0	2430	12070	30.9
GX180T	180	320	74.0	62.0	86.0	340	67.5	299	225	-	1.1	4.0	3910	11050	30.9
GX200S	200	340	80.0	66.0	87.0	365	70.0	320	247	27.0	1.1	1.0	3070	15280	34.2
GX200T	200	340	80.0	66.0	87.0	365	70.0	320	247	-	1.1	1.0	4950	13990	34.2



MILLIMETERS - - INCHES



MM	0	10	20	30	40	50	60	70	80	90
0	0.00000	0.39370	0.78740	1.18110	1.57480	1.96850	2.36220	2.75591	3.14961	3.54331
1	0.03937	0.43307	0.82677	1.22047	1.61417	2.00787	2.40157	2.79528	3.18898	3.58268
2	0.07874	0.47244	0.86614	1.25984	1.65354	2.04724	2.44094	2.83465	3.22835	3.62205
3	0.11811	0.51181	0.90551	1.29921	1.69291	2.08661	2.48031	2.87402	3.26772	3.66142
4	0.15748	0.55118	0.94488	1.33858	1.73228	2.12598	2.51969	2.91339	3.30709	3.70079
5	0.19685	0.59055	0.98425	1.37795	1.77165	2.16535	2.55906	2.95276	3.34646	3.74016
6	0.23622	0.62992	1.02362	1.41732	1.81102	2.20472	2.59843	2.99213	3.38583	3.77953
7	0.27559	0.66929	1.06299	1.45669	1.85039	2.24409	2.63780	3.03150	3.42520	3.81890
8	0.31496	0.70866	1.10236	1.49606	1.88976	2.28346	2.67717	3.07087	3.46457	3.85827
9	0.35433	0.74803	1.14173	1.53543	1.92913	2.32283	2.71653	3.11024	3.50394	3.89764

MM = INCH		MM = INCH		MM = INCH	
0.001	0.000039	0.01	0.000393	0.1	0.003937
0.002	0.000079	0.02	0.000787	0.2	0.007874
0.003	0.000118	0.03	0.001811	0.3	0.011811
0.004	0.000157	0.04	0.001575	0.4	0.015748
0.005	0.000197	0.05	0.001969	0.5	0.019685
0.006	0.000236	0.06	0.002362	0.6	0.023622
0.007	0.000276	0.07	0.002756	0.7	0.027559
0.008	0.000315	0.08	0.003150	0.8	0.031496
0.009	0.000354	0.09	0.003543	0.9	0.035433

MM	100	150	200	250	300	350
0	3.93701	5.90551	7.87402	9.84252	11.8110	13.7795
5	4.13386	6.10236	8.07087	10.0394	12.0079	13.9764
10	4.33071	6.29921	8.26772	10.2362	12.2047	14.1732
15	4.52756	6.49606	8.46457	10.4331	12.4016	14.3701
20	4.72441	6.69291	8.66142	10.6299	12.5984	14.5669
25	4.92126	6.88976	8.85827	10.8268	12.7953	14.7638
30	5.11811	7.09661	9.05512	11.0236	12.9921	14.9606
35	5.31496	7.28346	9.25197	11.2205	13.1890	15.1575
40	5.51181	7.48031	9.44882	11.4137	13.3858	15.3543
45	5.70866	7.67716	9.64567	11.6142	13.5827	15.5512