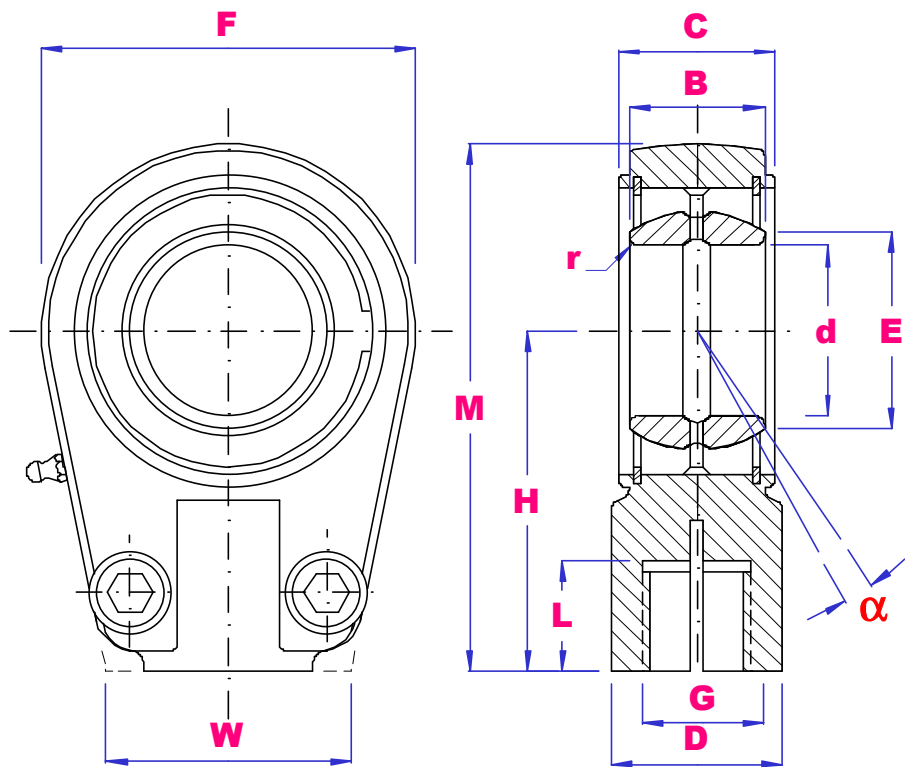




## SIR SERIES HYDRAULIC RODENDS STEEL / STEEL



PART NO	d	B	E	C	F	G 6H	H	L	M	N	D	W	P	CLAMP SCREW	r	$\alpha$ deg	Load kN		Wgt kg
																	Dyn	Stat	
<b>SIR20ES</b>	20	16	29	19	56	M16X1.5	50	17	78	25	25	46	17	M8X16	0.3	9	30	81	0.44
<b>SIR25ES</b>	25	20	35.5	23	56	M16X1.5	50	17	78	25	25	46	21	M8X20	0.6	7	48	72	0.47
<b>SIR30ES</b>	30	22	40.7	28	64	M22X1.5	60	23	92	30	32	50	26	M8X25	0.6	6	62	106	0.77
<b>SIR35ES</b>	35	25	47	30	78	M28X1.5	70	29	109	38	40	66	28	M10X30	0.6	6	79	153	1.24
<b>SIR40ES</b>	40	28	53	35	94	M35X1.5	85	36	132	45	49	76	33	M10X35	0.6	7	99	250	2.12
<b>SIR50ES</b>	50	35	66	40	116	M45X1.5	105	46	163	55	61	90	37	M12X40	0.6	6	156	365	3.74
<b>SIR60ES</b>	60	44	80	50	130	M58X1.5	130	59	195	65	75	120	46	M16X45	1.0	6	245	400	6.49
<b>SIR70ES</b>	70	49	92	55	154	M65X1.5	150	66	227	75	86	130	51	M16X50	1.0	6	313	540	9.88
<b>SIR80ES</b>	80	55	105	60	176	M80X2	170	81	258	80	105	160	55	M20X55	1.0	6	400	670	14.2
<b>SIR90ES</b>	90	60	115	65	206	M100X2	210	101	313	90	124	180	60	M20X60	1.0	5	488	980	20.0
<b>SIR100ES</b>	100	70	130	70	231	M110X2	235	111	350	105	138	200	65	M24X65	1.0	7	607	1120	27.5
<b>SIR110ES</b>	110	70	140	80	266	M120X3	265	125	398	115	152	220	74	M24X80	1.0	6	654	1700	45.6
<b>SIR120ES</b>	120	85	160	90	340	M130X3	310	135	480	140	172	257	84	M24X85	1.0	6	950	2900	72.0