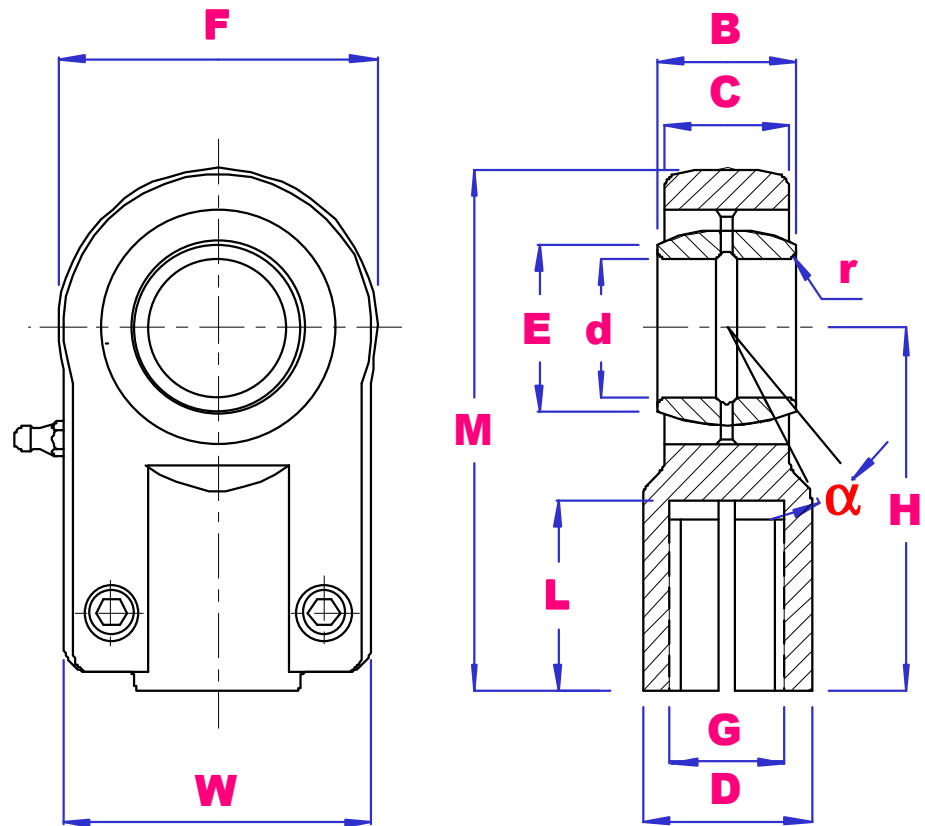




SIQ SERIES HYDRAULIC RODENDS STEEL / STEEL



PART NO	d	B	E	C	F	G 6H	H	L	M	N	D	W	CLAMP SCREW	r	α deg	Load kN		Wgt kg
																Dyn	Stat	
SIQ12E	12	10	18	8	35	M10X1.25	42	15	59.5	16	17	35	M6X12	0.3	10	10	17	0.12
SIQ16ES	16	14	25	11	45	M12X1.25	48	17	70.5	20	21	45	M6x12	0.3	10	21	28.5	0.22
SIQ20ES	20	16	29	13	55	M14X1.5	58	19	85.5	25	25	55	M8x16	0.3	9	30	42.5	0.43
SIQ25ES	25	20	35.5	17	65	M16X1.5	68	23	100	30	30	62	M8x16	0.6	7	48	67	0.67
SIQ30ES	30	22	40.7	19	80	M20X1.5	85	29	125	35	36	77	M10x20	0.6	6	62	108	1.25
SIQ40ES	40	28	53	23	100	M27X2	105	37	155	45	45	90	M10x20	0.6	7	99	156	2.16
SIQ50ES	50	35	66	30	120	M33X2	130	54	190	58	55	105	M12x30	0.6	6	156	245	3.91
SIQ60ES	60	44	80	38	160	M42X2	150	65	230	68	68	134	M16x35	1.0	6	245	380	8.2
SIQ80ES	80	55	105	47	205	M48X2	185	75	288	92	90	156	M20x45	1.0	6	400	585	16.2
SIQ100ES	100	70	130	55	240	M64X3	240	102	360	116	110	190	M24x55	1.0	7	607	865	28.4