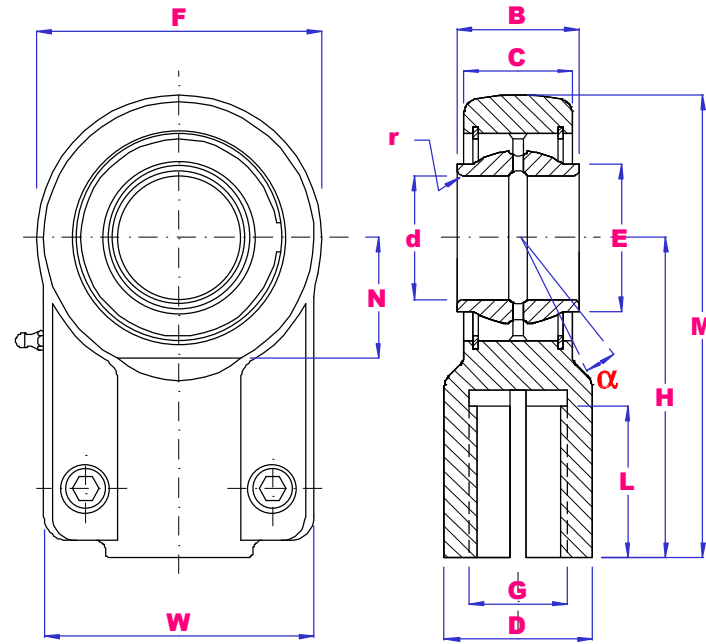




SIGEW SERIES HYDRAULIC RODENDS STEEL / STEEL



PART NO	d	B	E	C	F	G 6H	H	L	M	N	D	W	P	CLAMP SCREW	r	α deg	Load kN		Wgt kg
																	Dyn	Stat	
SIGEW12ES	12	12	18	11	32	M12X1.25	38	17	54	14	16	32	11	M5X12	0.3	4	10	24.5	0.11
SIGEW16ES	16	16	23	13	40	M14X1.5	44	19	64	20	21	40	13	M6X12	0.3	4	17	36.5	0.20
SIGEW20ES	20	20	29	17	47	M16X1.5	52	23	75.5	22	25	47	17	M8X20	0.3	4	30	48	0.35
SIGEW25ES	25	25	35.5	22	58	M20X1.5	65	29	94	27	30	54	19	M8X20	0.6	4	48	78	0.62
SIGEW32ES	32	32	43	28	71	M27X2	80	37	115.5	32	38	66	22	M10X25	0.6	4	65	114	1.15
SIGEW40ES	40	40	53	33	90	M33X2	97	46	142	41	47	80	26	M10X30	0.6	4	99	204	2.18
SIGEW50ES	50	50	66	41	109	M42X2	120	57	174.5	50	58	96	32	M12X35	0.6	4	156	310	3.96
SIGEW63ES	63	63	83	53	136	M48X2	140	64	208	62	70	114	38	M16X40	1.0	4	253	430	6.80
SIGEW70ES	70	70	92	57	155	M56X2	160	76	237.5	70	80	135	42	M16X40	1.0	4	313	540	9.60
SIGEW80ES	80	80	105	67	170	M64X3	180	86	265	78	90	148	48	M20X50	1.0	4	400	695	13
SIGEW90ES	90	90	115	72	185	M72X3	195	91	287.5	85	100	160	52	M20X60	1.0	4	488	750	19.1
SIGEW100ES	100	100	130	85	211	M80X3	210	96	315.5	98	110	178	62	M24X60	1.0	4	607	1060	25
SIGEW110ES	110	110	140	88	235	M90X3	235	106	352.5	105	125	190	62	M24X60	1.0	4	654	1200	32
SIGEW120ES	120	120	160	103	265	M100X3	260	113	392.5	120	135	200	72	M24X70	1.0	4	950	1430	46
SIGEW160ES	160	160	200	130	326	M125X4	310	126	473	150	165	250	82	M24X80	1.0	4	1360	2200	82.5
SIGEW200ES	200	200	250	162	418	M160X4	390	161	599	195	215	320	102	M30X100	1.0	4	2120	3650	168