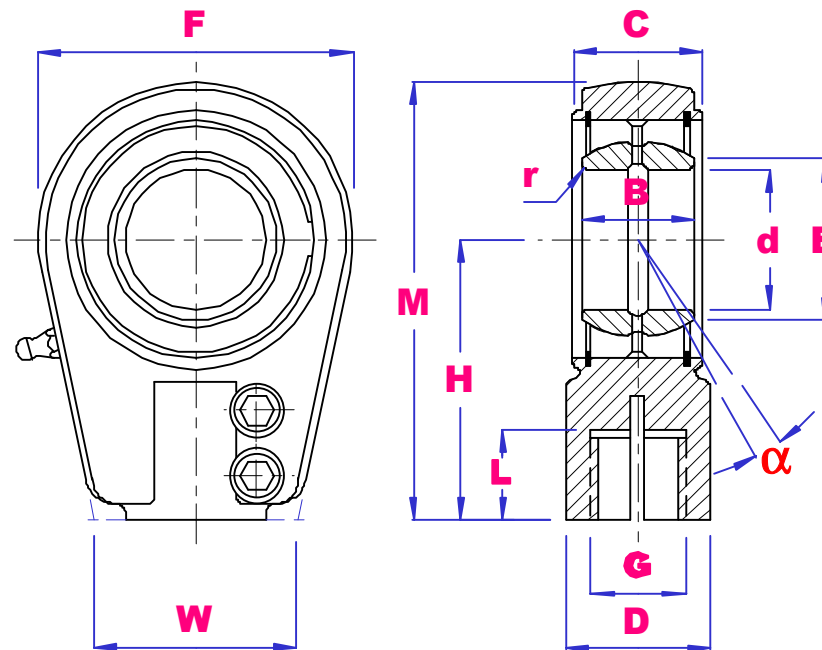




SIA SERIES HYDRAULIC RODENDS STEEL / STEEL



PART NO	d	B	E	C	F	G 6H	H	L	M	N	D	W	CLAMP SCREW	r	α deg	Load kN		Wgt kg
																Dyn	Stat	
SIA25ES	25	20	35.5	23	56	M18X2	65	30	95	29	28	48	M8X20	0.6	7	48	72	0.62
SIA30ES	30	22	40.7	28	64	M24x2	75	35	109	34	34	56	M8x25	0.6	6	62	106	0.88
SIA35ES	35	25	47	30	78	M30x2	90	46	132	40	45	65	M10x30	0.6	6	79	153	1.52
SIA40ES	40	28	53	35	94	M39x3	105	56	155	44	56.5	77	M12x35	0.6	7	99	250	2.43
SIA50ES	50	35	66	40	116	M50x3	135	76	198	55	70	88	M12x35	0.6	6	156	365	4.75
SIA60ES	60	44	80	50	130	M64x3	170	96	240	65	87	118	M16x45	1.0	6	245	400	8.55
SIA70ES	70	49	92	55	154	M80x3	195	112	277	75	110	128	M16x50	1.0	6	313	540	12.24
SIA80ES	80	55	105	60	176	M90x3	210	122	305	80	128	156	M20x55	1.0	6	400	670	18.35
SIA90ES	90	60	115	65	210	M100x3	250	142	365	90	152	167	M20x60	1.0	5	488	980	31.56
SIA100ES	100	70	130	70	230	M110x4	275	150	400	105	170	171	M20x60	1.0	7	607	1120	34
SIA110ES	110	70	140	80	264	M120x4	300	160	442	115	180	187	M24x75	1.0	6	654	1700	44
SIA120ES	120	85	160	90	340	M150x4	360	192	540	140	210	240	M24x85	1.0	6	950	2900	75
SIA140ES	140	90	180	110	380	M160x4	420	210	620	185	230	244	M30x100	1.0	7	1070	3350	160
SIA160ES	160	105	200	110	480	M180x4	460	220	710	200	260	268	M30x100	1.0	8	1360	4302	185