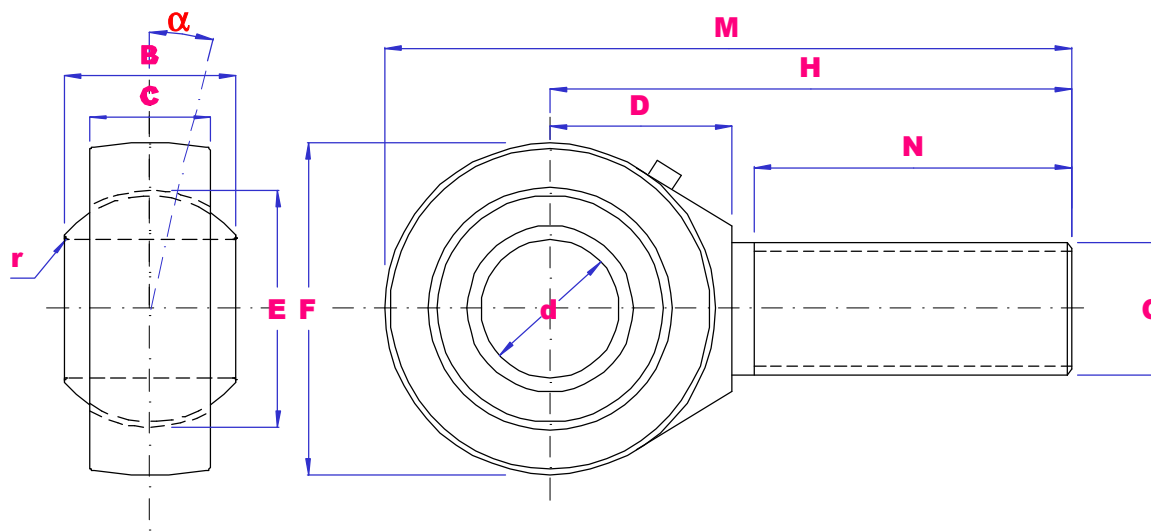




METRIC MALE NARROW RODENDS STEEL / STEEL



| PART NO | d | B | E | C | F | G 6g | H | N | M | D | r min | α deg | Load kN | | Wgt g |
|---------|----|----|------|------|-----|----------|-----|-----|-------|-------|----------|----------|---------|------|----------|
| | | | | | | | | | | | | | Dyn | Stat | |
| SA5E | 5 | 6 | 10 | 4.5 | 21 | M5X0.8 | 36 | 16 | 46.5 | 11.5 | 0.3 | 13 | 3.4 | 3.9 | 17 |
| SA6E | 6 | 6 | 10 | 4.5 | 21 | M6X1 | 36 | 16 | 46.5 | 11.5 | 0.3 | 13 | 3.4 | 5.5 | 17 |
| SA8E | 8 | 8 | 13 | 6.5 | 24 | M8X1.25 | 42 | 21 | 54 | 13 | 0.3 | 15 | 5.5 | 10 | 29 |
| SA10E | 10 | 9 | 16 | 7.5 | 29 | M10X1.5 | 48 | 26 | 62.5 | 15.5 | 0.3 | 12 | 8.1 | 16 | 44 |
| SA12E | 12 | 10 | 18 | 8.5 | 34 | M12X1.75 | 54 | 28 | 71 | 18 | 0.3 | 10 | 10 | 23 | 66 |
| SA15ES | 15 | 12 | 22 | 10.5 | 40 | M14X2 | 63 | 34 | 83 | 21 | 0.3 | 8 | 16 | 32 | 121 |
| SA17ES | 17 | 14 | 25 | 11.5 | 46 | M16X2 | 69 | 36 | 92 | 24 | 0.3 | 10 | 21 | 44 | 172 |
| SA20ES | 20 | 16 | 29 | 13.5 | 53 | M20X1.5 | 78 | 43 | 104.5 | 25.5 | 0.3 | 9 | 30 | 60 | 283 |
| SA25ES | 25 | 20 | 35.5 | 18 | 64 | M24X2 | 94 | 53 | 126 | 31 | 0.6 | 7 | 48 | 83 | 504 |
| SA30ES | 30 | 22 | 40.7 | 20 | 73 | M30X2 | 110 | 65 | 146.5 | 35.5 | 0.6 | 6 | 62 | 110 | 835 |
| SA35ES | 35 | 25 | 47 | 22 | 82 | M36X3 | 140 | 82 | 181 | 41 | 0.6 | 6 | 79 | 146 | 1410 |
| SA40ES | 40 | 28 | 53 | 24 | 92 | M39X3 | 150 | 86 | 196 | 47 | 0.6 | 7 | 99 | 180 | 1860 |
| SA45ES | 45 | 32 | 60 | 28 | 102 | M42X3 | 163 | 92 | 214 | 52 | 0.6 | 7 | 127 | 240 | 2570 |
| SA50ES | 50 | 35 | 66 | 31 | 112 | M45X3 | 185 | 104 | 241 | 60 | 0.6 | 6 | 156 | 290 | 3580 |
| SA60ES | 60 | 44 | 80 | 39 | 135 | M52X3 | 210 | 115 | 277.5 | 75.5 | 1.0 | 6 | 245 | 450 | 5730 |
| SA70ES | 70 | 49 | 92 | 43 | 160 | M56X4 | 235 | 125 | 315 | 95 | 1.0 | 6 | 313 | 610 | 7940 |
| SA80ES | 80 | 55 | 105 | 48 | 180 | M64X4 | 270 | 140 | 360 | 105.5 | 1.0 | 6 | 400 | 750 | 12060 |

THE FULL RANGE IS AVAILABLE IN LEFT HAND THREAD USE PART NO SAL-ES