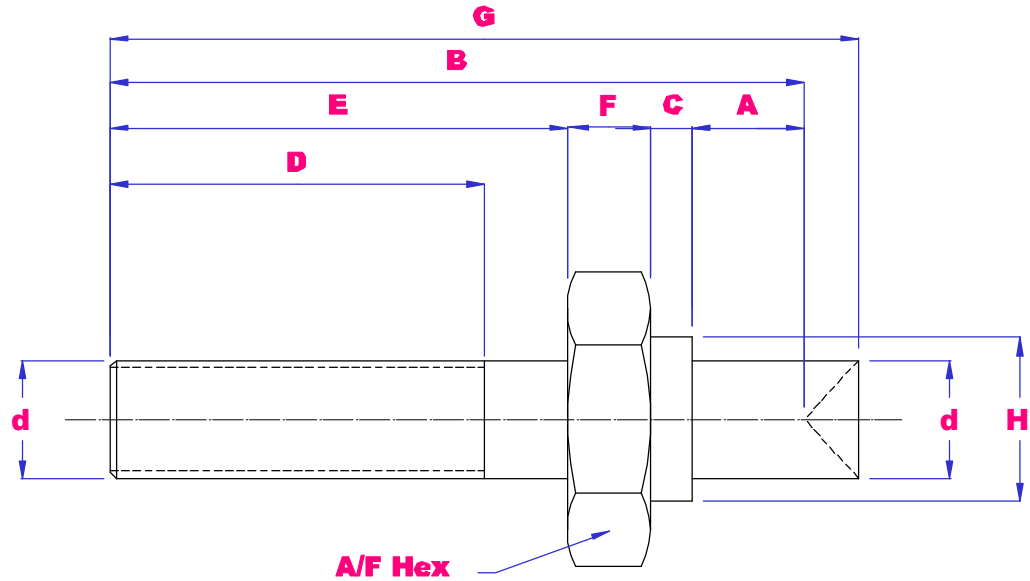




INCH RODEND STUDS



PART NO	d	THREAD	A	B	C	D	E	F	G	H	A/F	Wgt g
RESI-3/16	0.1875	10-32	0.312	30	4	12	13	5	31	8	8	5
RESI-1/4	0.25	1/4-28	0.375	37	6	14	16	6	38	10	10	11
RESI-5/16	0.3125	5/16-24	0.437	42	6	16	18	6	44	12	12	18
RESI-3/8	0.375	3/8-24	0.50	50	7	20	22	7	52	14	14	26
RESI-7/16	0.4375	7/16-20	0.562	61	9	25	28	8	61	16	16	41
RESI-1/2	0.50	1/2-20	0.625	61	9	25	28	8	61	16	16	50
RESI-5/8	0.625	5/8-18	0.75	81	11	35	40	9	83	20	18	113
RESI-3/4	0.75	3/4-16	0.875	93	12	40	46	10	95	24	24	208
RESI-1	1.00	1-12	1.375	125	16	50	60	14	128	30	30	336